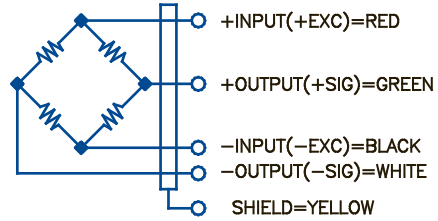


G4-SB-GF



SPECIFICATIONS

Rated Output (mV/V)	3.0±0.25%
Operating Temp Range (°C)	-18 to 65
Combined Error (%FS)	0.03
Zero Balance (%FS)	1.00
Excitation Voltage (VDC)	10 Nom, 15 Max
Safe Overload (%FS)	150
Ultimate Overload (%FS)	300
Safe Sideload (%FS)	100
Sideload Rejection Ratio	500:1
Bridge Resistance:	
Input (Ω)	420±40
Output (Ω)	350±3
Sealing	Environmentally protected /
Material	IP67
Cable Length (feet)	Tool steel / electroless nickel
Specs for G4-SB-N	10

CAPACITY

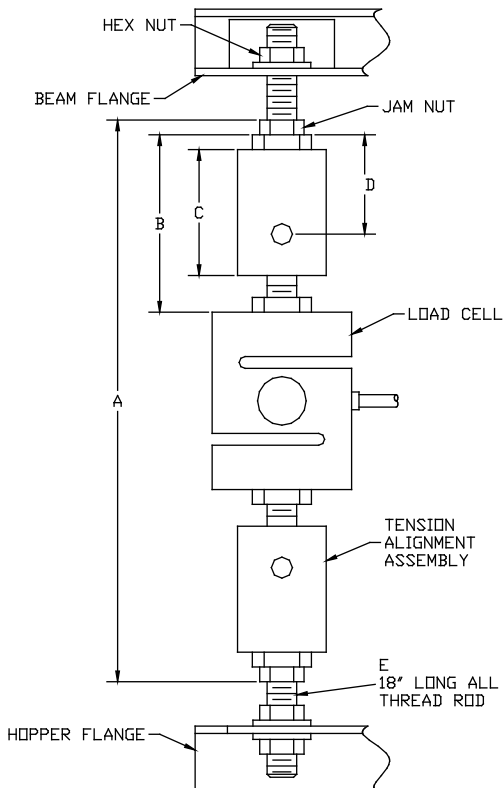
50-30000 lb
5K-10K lb
15K-20K lb

MODEL

G4-SB-GF
G4-SB-GFM
G4-SB-GFL

PRICE

\$195
\$255
\$995



CAPACITY (lb)	A	B	C	D	E
50 - 100	9.5"	3.20"	2.13"	1.68"	1/4-20
250	9.5"	3.15"	2.13"	1.68"	3/8-16
300 - 3k	9.5"	3.15"	2.13"	1.68"	5/8-11
5k - 10k	13.5"	4.18"	2.70"	1.90"	7/8-9