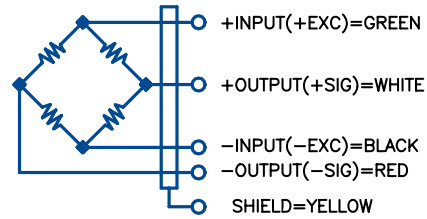


## G4-BBL-S

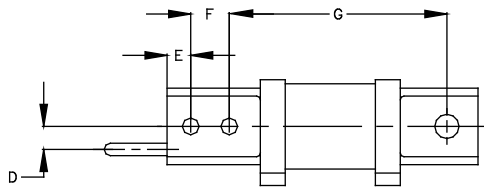


### SPECIFICATIONS

Excitation (VDC)	10 Nom, 15 Max
Rated Output (mV/V)	2.000±0.002
Zero Balance (%FS)	1.0
Bridge Resistance (Ω)	350 Nom
Combined Error (%FS)*	0.03
Non-repeatability (%FS)	.01
Creep 20 min. (%FS)	.03
Temperature Sensitivity:	
Output (%LOAD/°F)	0.0008
Zero (%FS/°F)	0.0015
Temperature Range:	
Compensated (°F)	0 to +150
Operating (°F)	-65 to +200
Safe Overload (%FS)	150
Ultimate Overload (%FS)	400
Safe Sideload (%FS)	50
Deflection at Capacity (in.)	0.020
Element Material	17-4pH stainless steel
Sealing	Neoprene Boot
Cable Length(ft.)	10
*Includes effects of non-linearity and hysteresis	

### CAPACITY

CAPACITY	MODEL #	PRICE
50 lb	G4-BBL50-S	\$460
100 lb	G4-BBL100-S	\$460
200 lb	G4-BBL200-S	\$460
500 lb	G4-BBL500-S	\$450
1000 lb	G4-BBL1K-S	\$480
5000 lb	G4-BBL5K-S	\$480



CAPACITY	A	B	C	D	E	F	G	H	J
50-200lb	1.23	5.00	.75	.37	.38	.62	3.50	1.50	1.25
500 & 1K	1.23	5.38	.75	.37	.62	1.00	3.25	2.12	1.01
5K	1.70	7.78	1.38	.53	.75	1.75	4.03	3.47	2.06

