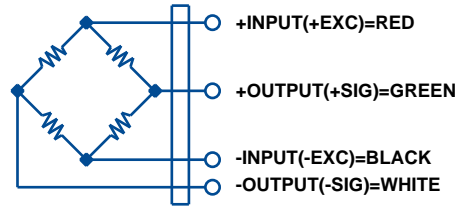


G4-DBN65203

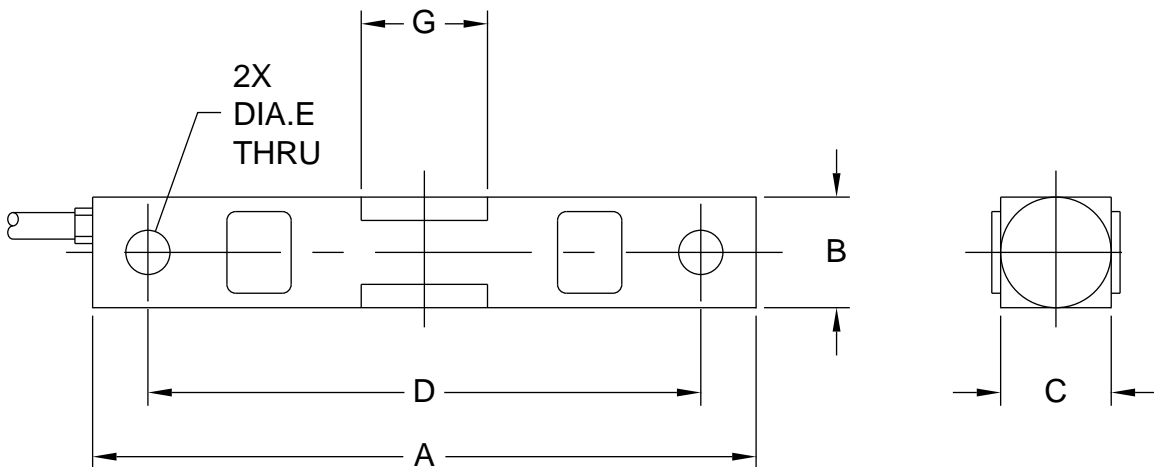


SPECIFICATIONS

Rated Output (mV/V)	3.00
Combined Error (%FS)	<0.03
Zero Balance (%FS)	±1.0
Creep in 30 min (%FS)	<0.03
Temperature Effect:	
Output (%load/5°C)	<0.0014
Zero (%FS/5°C)	<0.0027
Bridge Resistance (ohms)	700
Excitation Voltage (VDC)	10 Nom, 15 Max
Insulation Resistance (Mohms)	>5K
Safe Overload (%FS)	150
Sealing	IP67
Cable (m)	6
Material	Nickel Plated Alloy Steel

CAPACITY

1000 lb	G4-DB1KN65203	\$500
1500 lb	G4-DB1.5KN65203	\$500
2000 lb	G4-DB2KN65203	\$500
2500 lb	G4-DB2.5KN65203	\$500
4000 lb	G4-DB4KN65203	\$500
5000 lb	G4-DB5KN65203	\$500
10,000 lb	G4-DB10KN65203	\$600
15,000 lb	G4-DB15KN65203	\$600
20,000 lb	G4-DB20KN65203	\$600
25,000 lb	G4-DB25KN65203	\$600
35,000 lb	G4-DB35KN65203	\$600
50,000 lb	G4-DB50KN65203	\$950
75,000 lb	G4-DB75KN65203	\$950



CAPACITY		A	B	C	D	DIA.E	G
1K TO 5K	in.	7.50	1.22	1.22	6.25	0.50	1.20
10K TO 35K	in.	8.75	1.94	1.44	7.50	0.81	1.62
50K TO 75K	in.	13.50	2.94	2.44	11.50	1.31	3.25