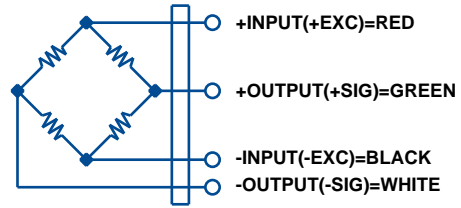


G4-DBS69203



SPECIFICATIONS

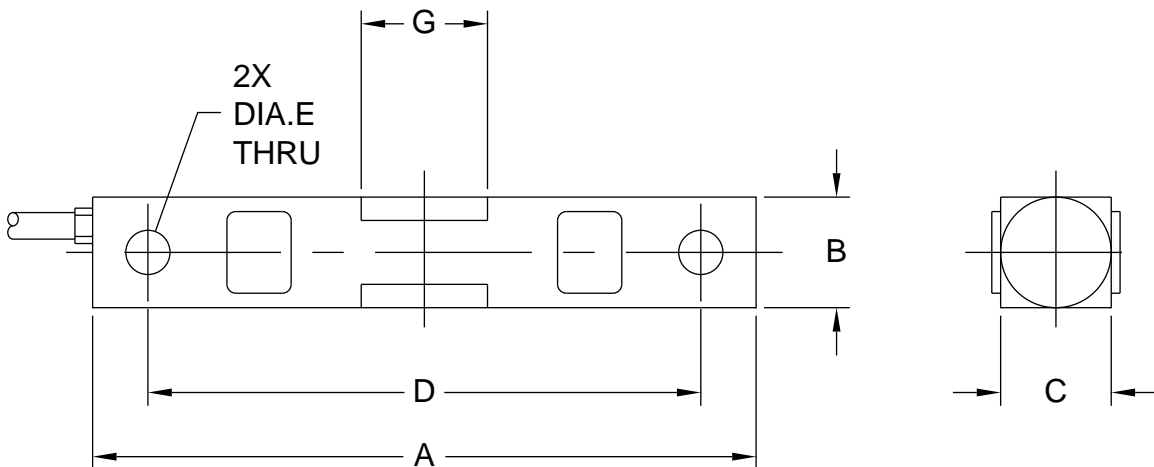
Rated Output (mV/V)	3.00
Combined Error (%FS)	<0.03
Zero Balance (%FS)	±1.0
Creep in 30 min (%FS)	<0.03
Temperature Effect:	
Output (%load/5°C)	<0.0014
Zero (%FS/5°C)	<0.0027
Bridge Resistance (ohms)	700
Excitation Voltage (VDC)	10 Nom, 15 Max
Insulation Resistance (Mohms)	>5K
Safe Overload (%FS)	150
Sealing	IP67
Cable (m)	6
Material	Stainless Steel

CAPACITY

1000 lb	G4-DB1KS69203	\$575
1500 lb	G4-DB1.5KS69203	\$575
2000 lb	G4-DB2KS69203	\$575
2500 lb	G4-DB2.5KS69203	\$575
4000 lb	G4-DB4KS69203	\$575
5000 lb	G4-DB5KS69203	\$575
10,000 lb	G4-DB10KS69203	\$675
15,000 lb	G4-DB15KS69203	\$675
20,000 lb	G4-DB20KS69203	\$675
25,000 lb	G4-DB25KS69203	\$675
35,000 lb	G4-DB35KS69203	\$675
50,000 lb	G4-DB50KS69203	\$1150
75,000 lb	G4-DB75KS69203	\$1150

MODEL

PRICE



CAPACITY		A	B	C	D	DIA.E	G
1K TO 5K	in.	7.50	1.22	1.22	6.25	0.50	1.20
10K TO 35K	in.	8.75	1.94	1.44	7.50	0.81	1.62
50K TO 75K	in.	13.50	2.94	2.44	11.50	1.31	3.25