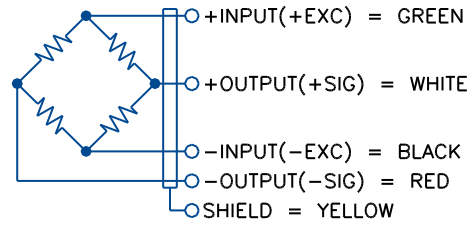


# G4-TSP25-HPS-S1



## SPECIFICATIONS

Rated Output (mV/V)	3.0±0.1%
Combined Error (%FS)	0.03
Temperature Range:	
Compensated (°F)	14 to 104
Operating (°F)	65 to 200
Bridge Resistance (ohms)	350
Excitation Voltage (VDC)	10 Nom, 15 Max
Insulation Resistance (Mohms)	5000
Safe Overload (%FS)	150
Ultimate Overload (%FS)	300
Sealing	Hermetically Sealed
Material	17-4 PH Stainless Steel
Cable length (feet)	10

## CAPACITY

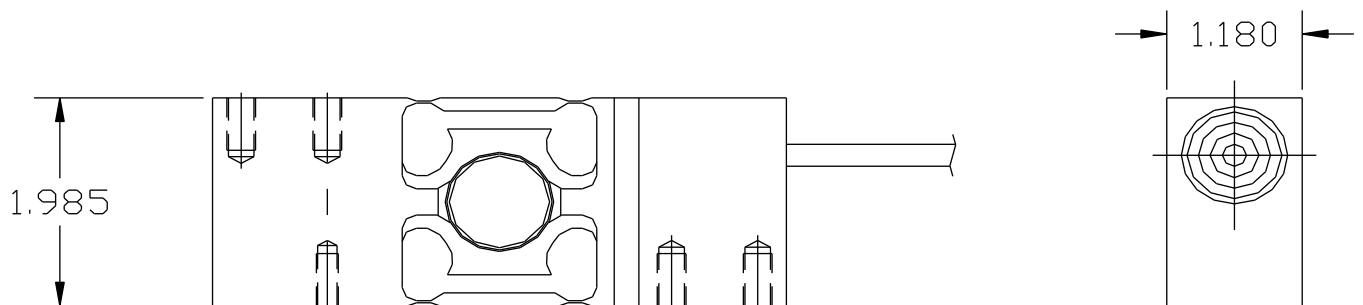
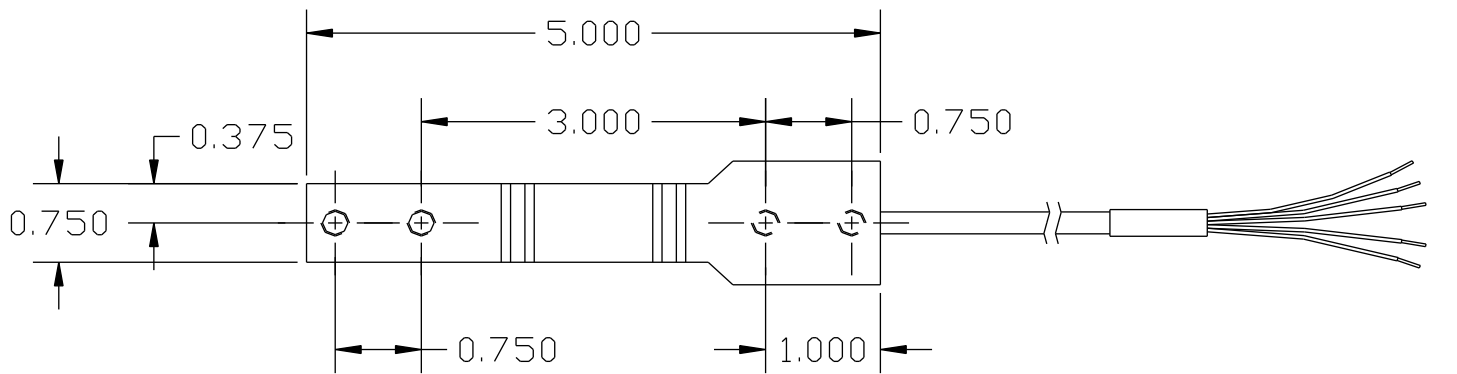
25 lb

## MODEL #

G4-TSP25-HPS-S1

## PRICE

\$615



10-24 UNC-2B  
.50 DEEP

4x 1/4-20-2B  
.43[11] DEEP