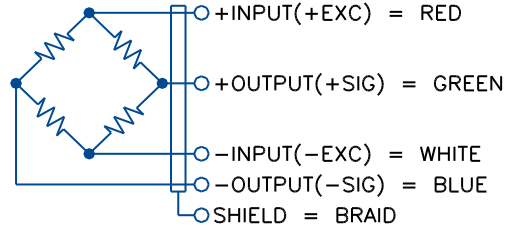


# G4-U2D1



### SPECIFICATIONS

Rated Output (mV/V)	2.0±0.2
Nonlinearity (%FS)	0.015
Hysteresis (%FS)	0.015
Repeatability (%FS)	0.02
Temperature Range:	
Compensated (°C)	-10 to +50
Operating (°C)	-10 to +50
Temperature Effect:	
Zero Balance (%FS/°C)	0.004
Output (%Load/°C)	0.0012
Safe Overload (%FS)	150
Ultimate Overload (%FS)	200
Material	2024-T351 Aluminum
Cable Length (cm)	30

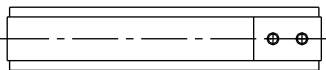
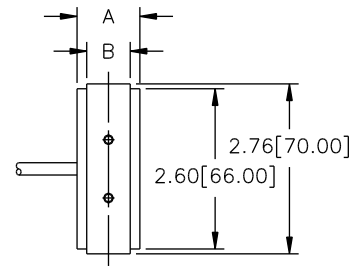
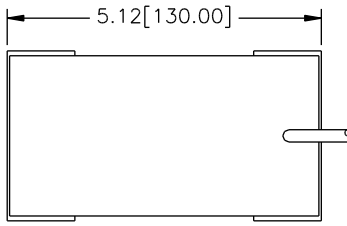
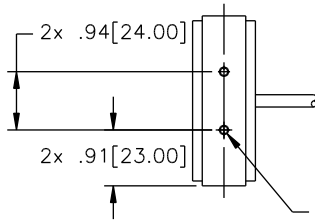
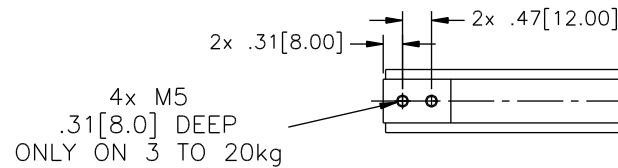
### CAPACITY

3 kg	G4-U2D1-3KG-F	\$295
6 kg	G4-U2D1-6KG-F	\$295
10 kg	G4-U2D1-10KG-F	\$295
15 kg	G4-U2D1-15KG-F	\$295
20 kg	G4-U2D1-20KG-F	\$295
25 kg	G4-U2D1-25KG-F	\$295
50 kg	G4-U2D1-50KG-F	\$295
100 kg	G4-U2D1-100KG-F	\$350

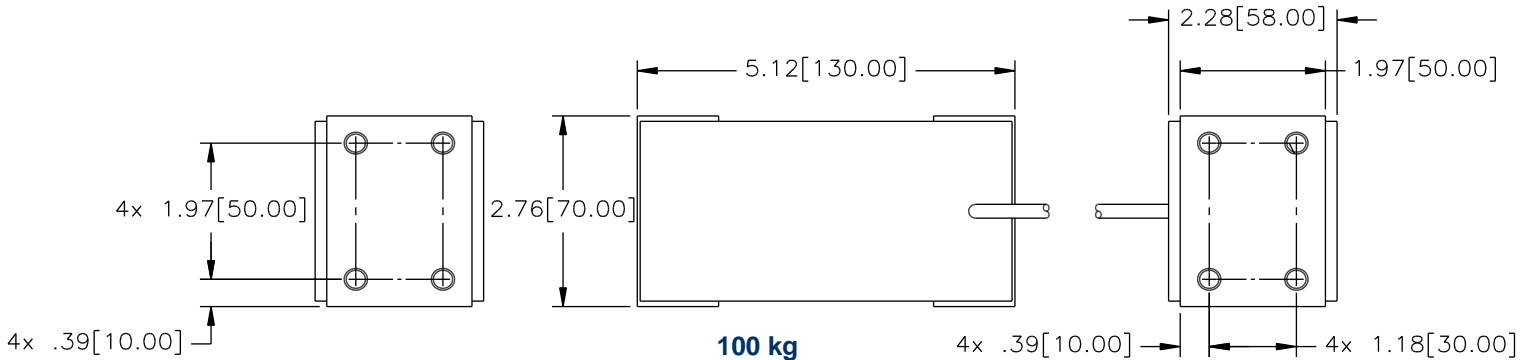
### MODEL #

### PRICE

CAPACITY (kg)	A	B	C
3 TO 20	1.02[26.0]	.71[18.0]	M4
25 TO 50	1.50[38.0]	1.18[30.0]	M6



**3 TO 50 kg**



**100 kg**