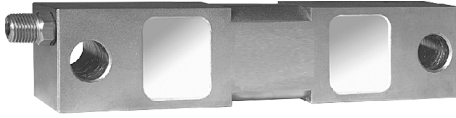
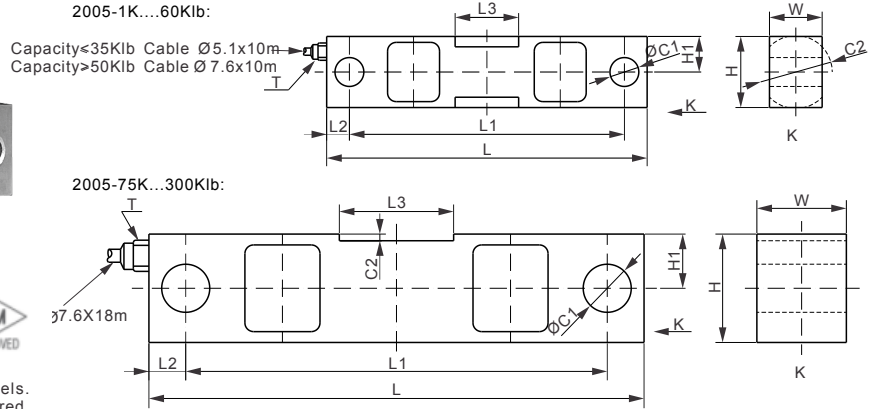


2005 Alloy Steel

DOUBLE ENDED BEAMS



** NOTE : Not all approvals are available on all models. Please request a certified drawing if specific approvals are required.



DIMENSIONS

RATED CAPACITY	C1	C2	H	H1	L	L1	L2	L3	W	T
lb/inches										
1,000..5,000	0.50	Ø 1.26	1.26	0.63	7.50	6.25	0.62	1.22	1.26	1/4-18 NPT
10,000..25,000	0.79	Ø 1.99	1.94	0.98	8.74	7.50	0.62	1.73	1.44	1/4-18 NPT
35,000	0.79	Ø 2.50	2.50	1.25	8.74	7.50	0.62	1.73	1.50	1/4-18 NPT
50,000	1.31	Ø 2.99	2.95	1.48	13.50	11.50	1.00	3.15	2.44	1/2-14 NPT
60,000	1.31	2.99	2.95	1.48	13.50	11.50	1.00	3.15	2.44	1/2-14 NPT
75,000	1.31	0.18	2.95	1.48	13.50	11.50	1.00	3.11	2.44	1/2-14 NPT
100,000..125,000	1.63	0.25	3.94	1.97	18.50	15.00	1.75	3.25	2.94	1/2-14 NPT
200,000	2.13	0.50	5.79	2.89	20.50	17.00	1.75	4.13	3.80	1/2-14 NPT
300,000	2.63	0.50	5.79	2.89	23.50	18.74	2.38	5.13	3.80	1/2-14 NPT
kg/mm (conversion of above dimensions)										
453.6..2,268	12.7	Ø 32.0	32.0	16.0	190.5	158.8	15.9	31.0	32.0	1/4-18 NPT
4,535.9..11,339.8	20.0	Ø 50.5	49.2	24.8	222.0	190.5	15.8	44.0	36.5	1/4-18 NPT
15,875.7	20.0	Ø 63.5	63.5	31.8	222.0	190.5	15.8	44.0	38.1	1/4-18 NPT
22,679.6	33.3	Ø 76.0	75.0	37.5	343.0	292.0	25.5	80.0	62.0	1/2-14 NPT
27,215.5	33.3	Ø 76.0	75.0	37.5	343.0	292.0	25.5	80.0	62.0	1/2-14 NPT
34,019.4	33.3	4.6	75.0	37.5	343.0	292.0	25.5	79.2	62.0	1/2-14 NPT
45,359.2..56,699	41.4	6.4	100.0	50.0	470.0	381.0	44.5	82.6	74.7	1/2-14 NPT
90,718.5	54.0	12.7	147.0	73.5	520.7	431.7	44.5	105.0	96.5	1/2-14 NPT
136,077.7	66.8	12.7	147.0	73.5	597.0	476.0	60.5	130.3	96.5	1/2-14 NPT

SPECIFICATIONS

Rated Capacity	lb	1K; 1.5K; 2.5K; 5K	10K; 15K; 20K; 25K	35K	50K; 60K; 75K	100K; 125K	200K; 300K
Weight (G), approx.	kg/lb	2 / 4	3 / 6	4 / 9	11 / 25	-	-
Full Scale Output	mV/V	3.0±0.25%					
Zero Balance	mV/V	±0.02					
Non-linearity	%	<±0.050					
Repeatability	%	<±0.030					
Hysteresis Error	%	<±0.030					
Creep in 30 min.	%	<±0.030					
Bridge Resistance	Ω	700±14					
Rated Excitation	V(DC/AC)	10 (15V Maximum)					
Insulation Resistance	GΩ	>2[50 VDC]					
Nominal Temperature Range	°C/°F	-10 to 40 / 14 to 104					
Safe Overload	% of full scale	150					
Breaking Overload	% of full scale	300					
Seal Type		Environmentally-sealed, IP67					

- Exc+ Red
- Sig+ Green
- Exc- Black
- Sig- White
- Shield Bare

AVAILABLE OPTIONS

Service temperature range up to 120°C[248°F]
6-wire circuit

WEIGH MODULE AVAILABLE

Model	Page
2000WM3.....	114

INTERCHANGEABLE PRODUCTS

Manufacturer	Model
Rice Lake	RL75016
Vishay Celtron.....	DSR
Vishay Revere Transducers	5203
Vishay Sensortronics.....	65016