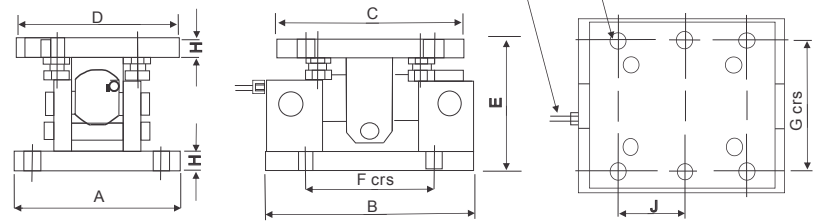




\*\* NOTE : Not all approvals are available on all models. Please request a certified drawing if specific approvals are required.



DOUBLE ENDED BEAMS

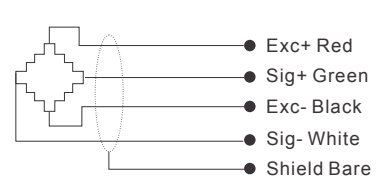
Note: No holding bolt facilities on 100t, 150t and 200t capacities

**DIMENSIONS**

<b>RATED CAPACITY</b>	<b>A</b>	<b>B</b>	<b>C</b>	<b>D</b>	<b>E</b>	<b>F</b>	<b>G</b>	<b>H</b>	<b>J</b>	<b>K</b>	<b>L</b>
<b>lb/inches</b>											
4409,11023,22046,33069,	6.97	9.25	9.25	6.97	5.31	6.10crs	5.51crs	0.70	N/A	.31	0.70
66139,110231	10.0	11.22	10.0	8.66	8.27	6.89crs	6.89crs	0.98	N/A	.31	0.87
165346	10.0	12.99	12.99	10.0	9.84	7.87crs	7.09crs	0.98	3.94crs	.47	0.87
220462	13.78	17.32	17.32	13.39	10.87	11.81crs	9.25crs	1.18	5.91crs	.47	1.02
330693,44092	13.78	17.32	17.32	13.78	12.80	12.20crs	11.22crs	1.18	6.10crs	.47	1.26
<b>kg/mm</b>											
2000,5000,10000,15000,20000	177.0	235.0	235.0	177.0	135.0	155.0crs	140.0crs	18.0	N/A	8.0	18.0
30000,50000	254.0	285.0	254.0	220.0	210.0	175.0crs	175.0crs	25.0	N/A	8.0	22.0
75000	254.0	330.0	330.0	254.0	250.0	200.0crs	180.0crs	25.0	100.0crs	12.0	22.0
100000	350.0	440.0	440.0	340.0	275.0	300.0crs	235.0crs	30.0	150.0crs	12.0	26.0
150000,200000	350.0	440.0	440.0	350.0	325.0	310.0crs	285.0crs	30.0	155.0crs	12.0	32.0

**SPECIFICATIONS**

<b>Rated Capacity</b>	t	2;5;10;15;20;30;50;75;100;150;200
<b>Full Scale Output</b>	mV/V	2.0±0.25%
<b>Zero Balance</b>	mV/V	<±2.00
<b>Non-linearity</b>	%	<±0.030
<b>Repeatability</b>	%	<±0.015
<b>Hysteresis Error</b>	%	<±0.030
<b>Rated Excitation</b>	V(DC/AC)	10 (18V Maximum)
<b>Insulation Resistance</b>	MΩ	>500[100 VDC]
<b>Nominal Temperature Range</b>	°C/°F	-50 to 80 / 122 to 176
<b>Safe Overload</b>	% of full scale	150
<b>Breaking Overload</b>	% of full scale	300
<b>Seal Type</b>		Welded-seal, IP68



- Exc+ Red
- Sig+ Green
- Exc- Black
- Sig- White
- Shield Bare