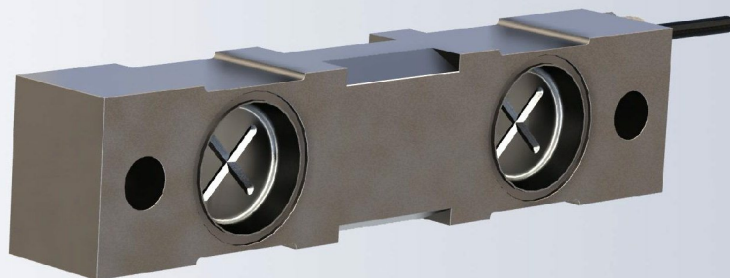


The type 2012 is a stainless steel double ended shear beam, commonly used in general purpose weigh systems and truck scales.



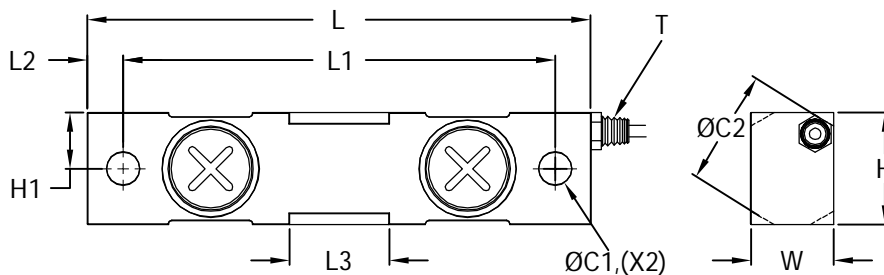
FEATURES

- Capacities from 2.5klb to 50klb.
- Stainless steel construction.
- Environmental protection IP68.

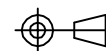
APPLICATIONS

- general purpose weigh systems and truck scales.

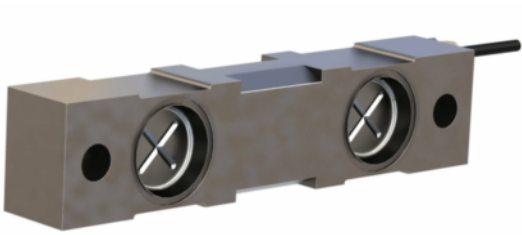
OUTLINE DIMENSIONS



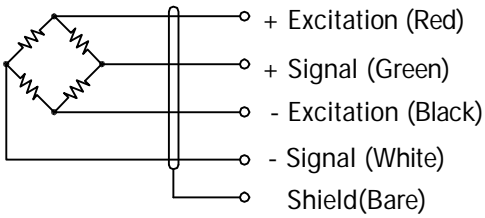
Capacity(klb)	C1	C2	H	H1	L	L1	L2	L3	W	T
2.5-5	0.50 [12.7]	1.26 [32.0]	1.26 [32.0]	0.67 [17.0]	7.50 [190.5]	6.25 [158.8]	0.62 [15.9]	1.22 [31.0]	1.26 [32.0]	1/4-18NPT
10-25	0.79 [20.0]	1.99 [50.5]	1.94 [49.2]	0.97 [24.6]	8.74 [222.0]	7.50 [190.5]	0.62 [15.8]	1.73 [44.0]	1.44 [36.5]	1/4-18NPT
35	0.79 [20.0]	2.50 [63.5]	2.50 [63.5]	1.25 [31.8]	8.74 [222.0]	7.50 [190.5]	0.62 [15.8]	1.73 [44.0]	1.50 [38.1]	1/4-18NPT
50	1.31 [33.3]	2.99 [76.0]	2.95 [75.0]	1.48 [37.5]	13.50 [343.0]	11.50 [292.0]	1.00 [25.5]	3.15 [80.0]	2.44 [62.0]	1/2-14NPT



2012



WIRING



Cable : 4-Conductor cable.

SPECIFICATIONS

Model	2012	
Capacities	klb	2.5/ 5/ 10/ 15/ 25/ 35/ 50
Full scale output(FS)	mV/V	3.0±0.25%
Non-linearity	%FS	≤±0.05
Hysteresis	%FS	≤±0.03
Non- repeatability	%FS	≤±0.03
Creep@30min	%FS	≤±0.03
Zero Balance	mV/V	±0.06
Temperature range		
	Operating	°C -10... +40
Bridge resistance	Ω	700±10
Excitation voltage	VDC	10... 15
Insulation resistance@50VDC	MΩ	≥2000
Safe overload limit	%FS	150
Ultimate load	%FS	300
Cable length	ft	
Seal type	IP68	
Element material	Stainless steel	