

The 8005/8006 series load cell is designed for special force and weight applications. The compact design makes it easy to fit the load cell into unique form factor requirements.



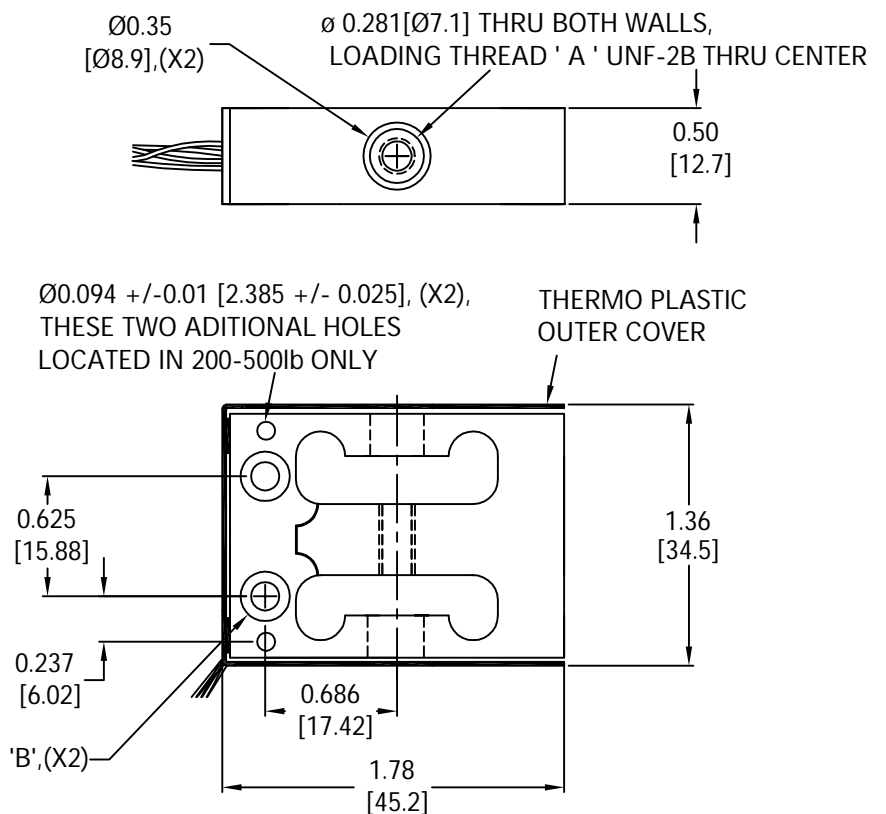
### FEATURES

- Capacities from 2lb to 500lb.
- Aluminium construction for 2-100lb.
- Stainless steel construction for 200-500lb.
- Environmental Protection IP67.

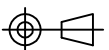
### APPLICATIONS

- Force measurement.

### OUTLINE DIMENSIONS

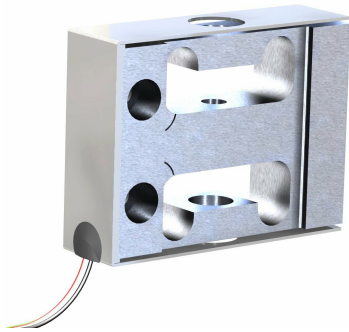


Capacity(lb)	A	B
2, 5,10, 20, 50,100, 200	10-32	Ø0.14[3.6]THRU,C'BORE Ø0.25[6.4] × 0.22[5.6]
500	1/4-28	Ø0.21[5.3]THRU,C'BORE Ø0.34[8.6] × 0.22[5.6]

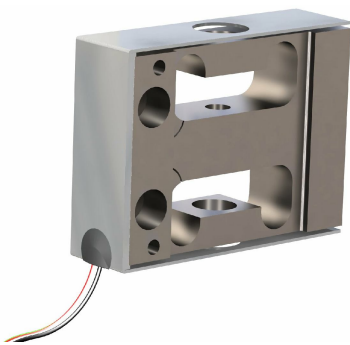


# single point 8005/ 8006

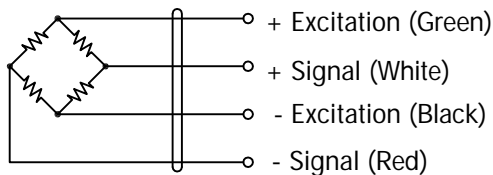
2-100lb :



200-500lb :



## WIRING



Cable : 28 AWG, Teflon wires.

## SPECIFICATIONS

Model		8005/ 8006	
Capacities	lb	2, 5, 10, 20, 50, 100, 200, 500	
Full scale output(FS)	mV/V	2±10%	
Non-linearity (2- 100lb)	%FS	≤±0.02	
Non-linearity (200- 500lb)	%FS	≤±0.06	
Hysteresis (2-100lb)	%FS	≤±0.02	
Hysteresis (200- 500lb)	%FS	≤±0.06	
Non- repeatability	%FS	≤±0.02	
Creep@30min	%LOAD	≤±0.025	
Zero Balance	%FS	≤±3	
Temperature effect			
	Output	%FS/°C	≤±0.01
	Zero	%FS/°C	≤±0.01
Temperature range			
	Compensated	°C	15... +72
	Operating	°C	-50... +93
Terminal resistance			
	Input resistance	Ω	1165±50
	Output resistance	Ω	1000±3
Excitation voltage	VDC	10... 18	
Insulation resistance@50VDC	MΩ	≥5000	
Safe overload limit	%FS	200	
Cable length	ft	See table	
Seal type	IP67		
Element material	Anodized aluminum(2-100lb) Stainless steel (200-500lb)		

## PART NUMBERS

Capacity(lb)	Deflection(mm)	Cable Length(in)	Part #
2	0.33	6	8005-000-00
5	0.18	6	8005-001-00
10	0.15	11	8005-002-00
20	0.20	6	8005-003-00
50	0.39	11	8005-004-00
100	0.60	6	8005-005-00
200	0.54	6	8006-000-00
500	0.70	6	8006-001-00

Dimensions and specifications subject to change without notice