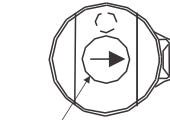
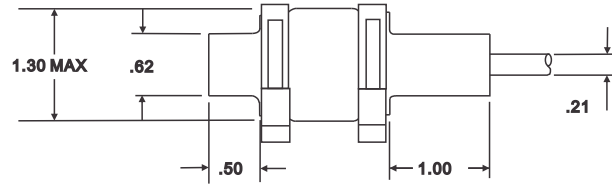


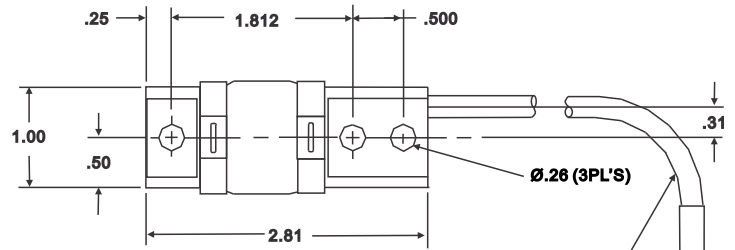
# 1026

## Aluminum

SINGLE ENDED BEAMS



DIRECTION OF FORCE  
(FRONT VIEW)



4 CONDUCTOR CABLE AWG 22  
67" LENGTH



\*\* NOTE : Not all approvals are available on all models. Please request a certified drawing if specific approvals are required.

### SPECIFICATIONS

|                           |                 |                              |
|---------------------------|-----------------|------------------------------|
| Rated Capacity            | lb              | 250                          |
| Full Scale Output         | mV/V            | 3 ± 0.15                     |
| Non-linearity             | %FS             | <±.03                        |
| Hysteresis error          | %FS             | <±.05                        |
| Zero Balance              | %FS             | <±1.0                        |
| Creep 20 min              | %FS             | <±.03                        |
| Bridge Resistance         | Ω               | 350                          |
| Rated Excitation          | V(DC/AC)        | 10 (15V Maximum)             |
| Nominal Temperature Range | °C/°F           | -20 to 60 / -4 to 140        |
| Safe Overload             | % of full scale | 150                          |
| Material                  |                 | Anodized Aluminum, 2024-T351 |
| Seal Type                 |                 | SIGMA Seal II & Cover/Boot   |
| Cable Length              | in              | 67                           |

