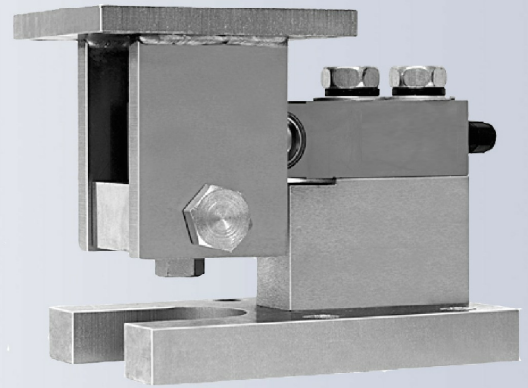


The 1000 WM2 is a universally accepted Weigh Module. Designed to allow for easy alignment and tank expansion.



FEATURES

- Capacities from 100lb to 10000lb.
- Alloy steel construction.

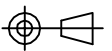
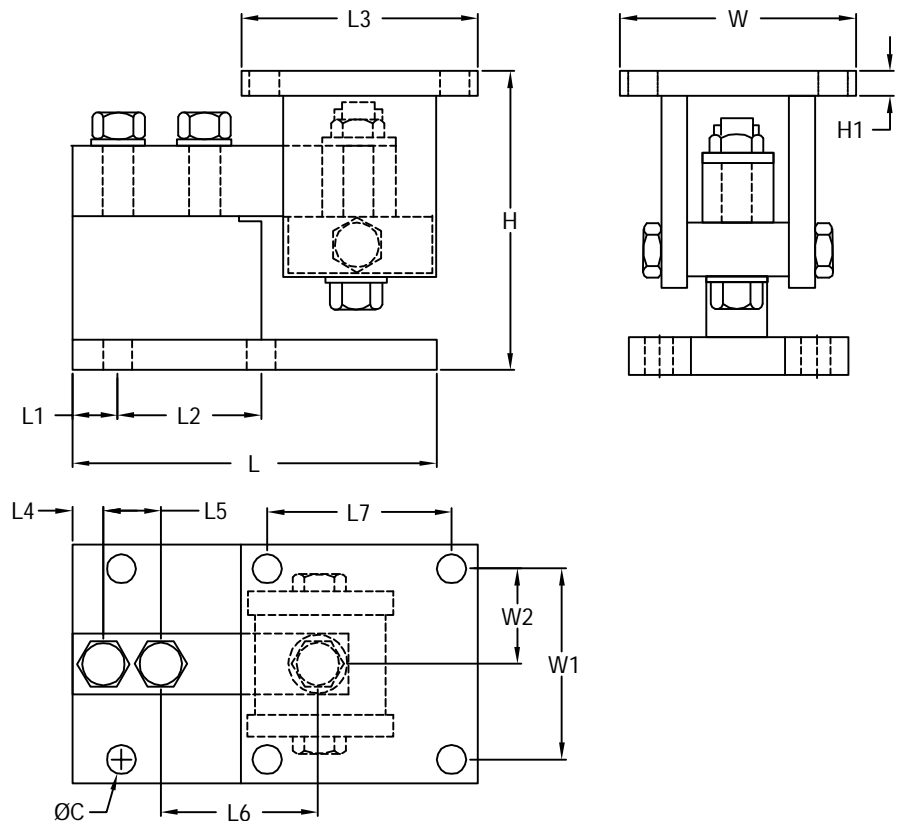
APPLICATIONS

- Conveyors, Medium-capacity tanks and hoppers.

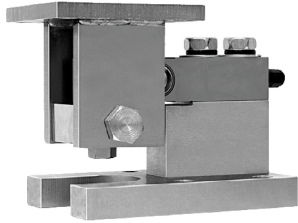
OPTIONS

- Nickel plated mild steel / stainless steel versions.

OUTLINE DIMENSIONS



weigh module
1000WM2



OUTLINE DIMENSIONS

| Rated Capacity(lb) | C | Hmin/max | H1 | L | L1 | L2 | L3 | L4 | L5 | L6 | L7 | W | W1 | W2 |
|--------------------|------|-----------|------|------|------|------|------|-------|------|------|------|------|------|------|
| 100.. 4000;SE5000 | 0.63 | 5.25/5.56 | 0.50 | 5.98 | 0.67 | 2.00 | 5.04 | 15.80 | 1.00 | 3.00 | 4.02 | 5.04 | 4.02 | 2.01 |
| 5000...10000 | 0.63 | 6.12/6.62 | 0.50 | 7.76 | 1.06 | 2.99 | 5.04 | 19.10 | 1.50 | 3.75 | 4.02 | 5.04 | 4.02 | 2.01 |

Metric conversion of above table (kb/mm)

| Rated Capacity(kg) | C | Hmin/max | H1 | L | L1 | L2 | L3 | L4 | L5 | L6 | L7 | W | W1 | W2 |
|------------------------|------|--------------|------|-------|------|------|-------|-------|------|------|-------|-------|-------|------|
| 45.4 ..1,814.4;SE2,268 | 16.0 | 133.4/ 141.2 | 12.7 | 152.0 | 17.0 | 50.8 | 128.0 | 401.3 | 25.4 | 76.2 | 102.1 | 128.0 | 102.1 | 51.1 |
| 2,268 ..4,535.9 | 16.0 | 155.5/ 168.2 | 12.7 | 197.0 | 27.0 | 75.9 | 128.0 | 485.1 | 38.1 | 95.3 | 102.1 | 128.0 | 102.1 | 51.1 |

Dimensions and specifications subject to change without notice