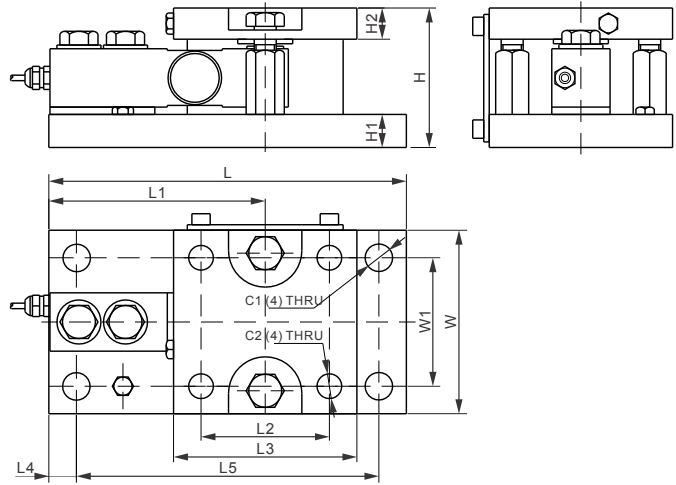
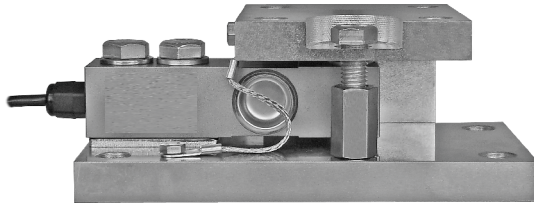


1000WM3

Alloy Steel



Load Cell Certifications:



Note: Weigh Assembly only. Load cell not included

DIMENSIONS

RATED CAPACITY	C1	C2	H	H1	H2	L	L1	L2	L3	L4	L5	W	W1
lb/inches													
100..4,000;SE5,000	0.59 DIA	0.53 DIA	2.99	0.71	0.67	7.68	4.65	2.76	3.94	0.59	6.50	3.94	2.76
5,000..10,000	0.71 DIA	0.59 DIA	4.33	1.06	0.98	9.57	6.00	3.35	4.72	0.75	8.07	4.72	3.35
15,000..20,000	0.87 DIA	0.79 DIA	5.73	1.42	1.26	12.52	7.76	4.09	5.98	1.00	10.52	5.98	4.09
kg/mm													
500..2,000	15.0 DIA	13.5 DIA	76.0	18.0	17.0	195.0	118.0	70.0	100.0	15.0	165.1	100.0	70.0
3,000..5,000	18.0 DIA	15.0 DIA	110.0	27.0	25.0	243.0	152.5	85.0	120.0	19.0	205.0	120.0	85.0
10,000	22.0 DIA	20.0 DIA	145.5	36.0	32.0	318.0	197.0	104.0	152.0	25.4	267.2	152.0	104.0

AVAILABLE OPTIONS

Stainless Steel

WEIGH MODULES