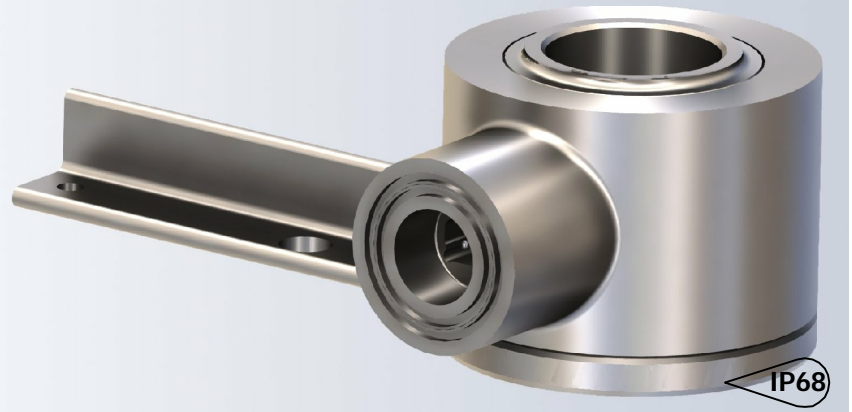


The type SSRLC is a stainless steel compression type load cell with complete hermetic sealing. It is a perfect fit for pump off control systems.



#### FEATURES

- Capacity of 30klb, 50klb.
- Stainless steel construction.
- Environmental Protection IP68 with complete hermetic sealing.

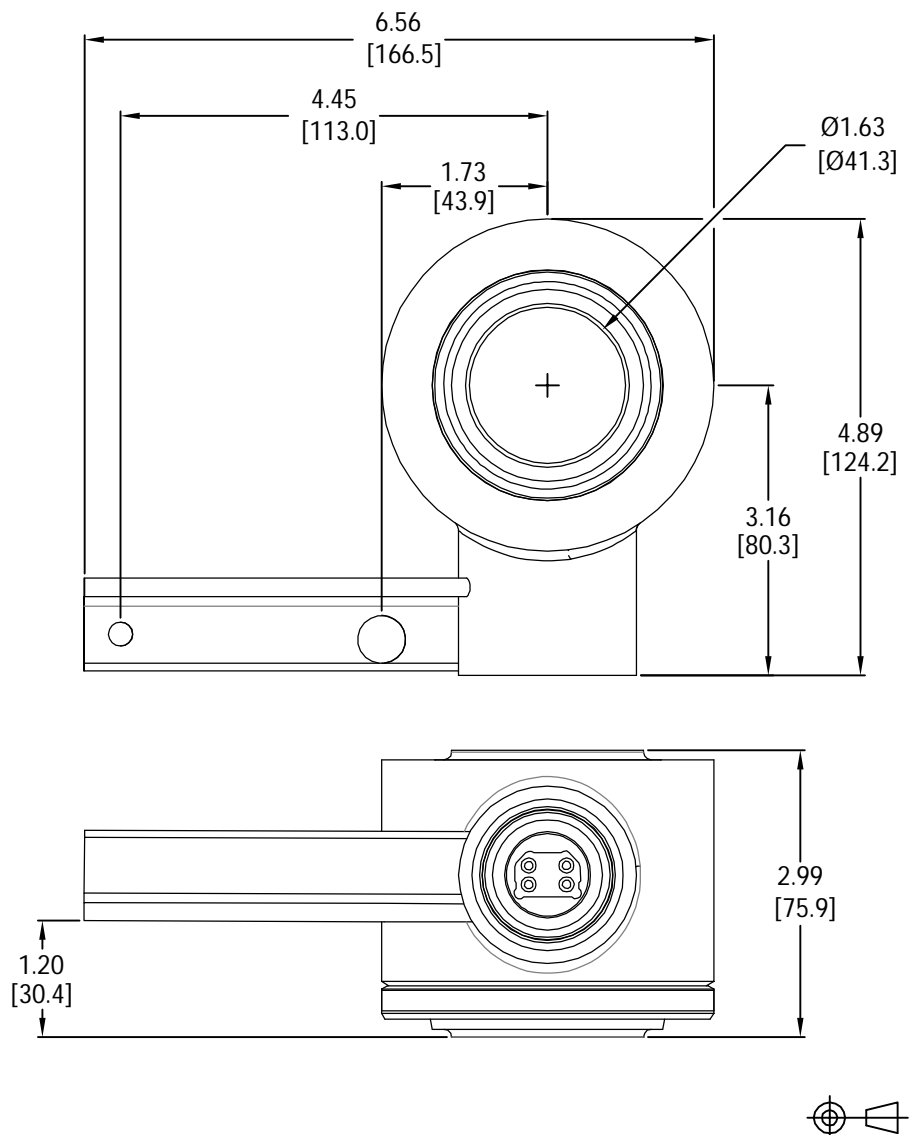
#### APPLICATIONS

- Pump off control systems.

#### OPTIONS

- Lightening protection.
- Spherical washer load introduction kit.

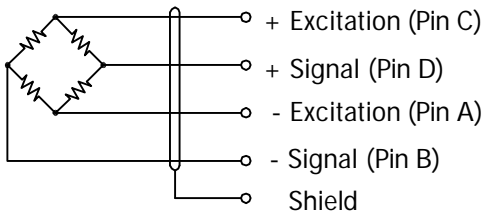
#### OUTLINE DIMENSIONS



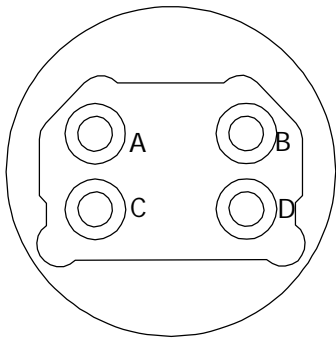
specialty sensors  
**SSRLC-SUCKER ROD LOAD CELL**  
**8012**



**WIRING**



Pin configuration :



Cable entry thread type : NPT-3/4  
 Connector : Molex model 1261

**SPECIFICATIONS**

Model	8012		
Capacities	klb	30/ 50	
Full scale output(FS)	mV/V	2.01±0.03	
Combined error	%FS	≤±0.5	
Zero Balance	%FS	≤±1	
Temperature effect			
	Output	%LOAD/°F	≤±0.002
	Zero	%FS/°F	≤±0.002
Temperature range			
	Compensated	°F	0... +150
	Operating	°F	-40... +180
Terminal resistance			
	Input resistance	Ω	700±25
	Output resistance	Ω	700±5
Excitation voltage	VDC	15	
Insulation resistance@50VDC	MΩ	≥5000	
Static overload capacity	%FS	150	
Seal type	IP68		
Element material	Stainless steel		

**PART NUMBERS**

Capacity(klb)	Part #
30	8012-XXX-XX
50	8012-001-01

Dimensions and specifications subject to change without notice



Group Four Transducers  
 22 Deer Park Drive,  
 E. Longmeadow, MA 01028  
 www.groupfourtransducers.com

Phone : (800) 419 1444  
 Fax : (413) 525 -6182  
 sales@group-4.com