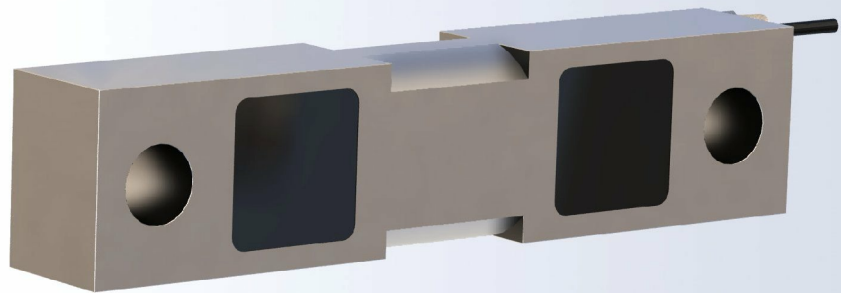


The type 2005 is a steel double ended shear beam, commonly used in general purpose weigh systems and truck scales.



FEATURES

- Capacities from 1klb to 300klb.
- Alloy steel construction.
- Environmental protection IP67.

APPLICATIONS

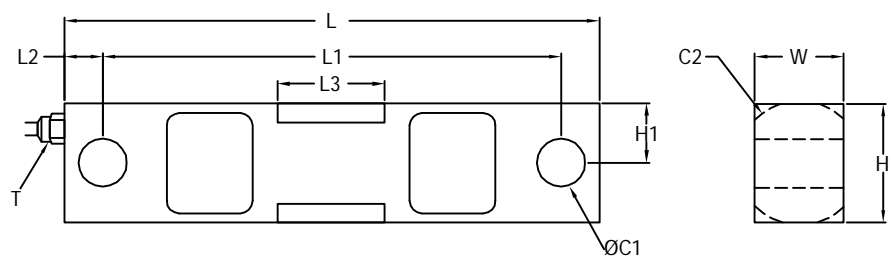
- General purpose weigh systems and truck scales.

OPTIONS

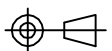
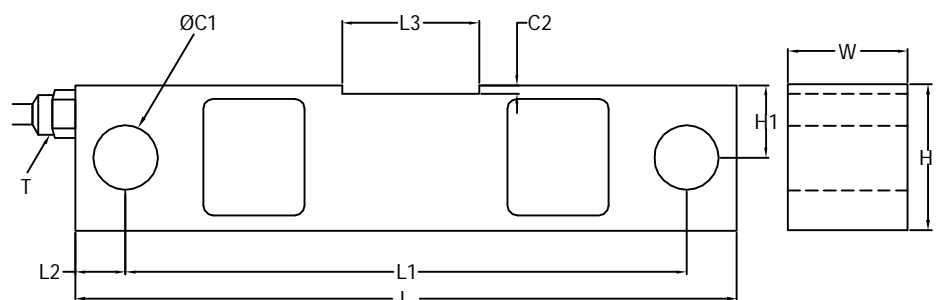
- Service temperature range up to 120°C.
- 6-wire circuit.

OUTLINE DIMENSIONS

1-60klb :

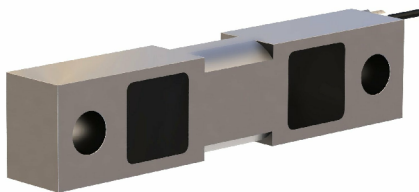


75-300klb :



double ended beams 2005

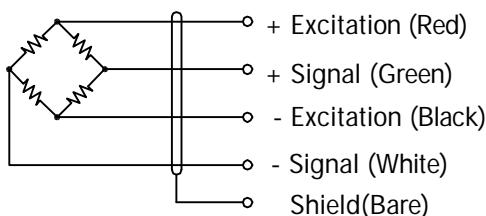
Capacity(klb)	C1	C2	H	H1	L	L1	L2	L3	W	T
1-5	0.50 [12.7]	Ø1.26 [Ø32.0]	1.26 [32.0]	0.63 [16.0]	7.50 [190.5]	6.25 [158.8]	0.62 [15.9]	1.22 [31.0]	1.26 [32.0]	1/4-18 NPT
10-25	0.79 [20.0]	Ø1.99 [Ø50.5]	1.94 [49.2]	0.98 [24.8]	8.74 [222.0]	7.50 [190.5]	0.62 [15.8]	1.73 [44.0]	1.44 [36.5]	1/4-18 NPT
35	0.79 [20.0]	Ø2.50 [Ø63.5]	2.50 [63.5]	1.25 [31.8]	8.74 [222.0]	7.50 [190.5]	0.62 [15.8]	1.73 [44.0]	1.50 [38.1]	1/4-18 NPT
50	1.31 [33.3]	Ø2.99 [Ø76.0]	2.95 [75.0]	1.48 [37.5]	13.50 [343.0]	11.50 [292.0]	1.00 [25.5]	3.15 [80.0]	2.44 [62.0]	1/2-14 NPT
60	1.31 [33.3]	Ø2.99 [Ø76.0]	2.95 [75.0]	1.48 [37.5]	13.50 [343.0]	11.50 [292.0]	1.00 [25.5]	3.15 [80.0]	2.44 [62.0]	1/2-14 NPT
75	1.31 [33.3]	0.18 [4.6]	2.95 [75.0]	1.48 [37.5]	13.50 [343.0]	11.50 [292.0]	1.00 [25.5]	3.11 [79.2]	2.44 [62.0]	1/2-14 NPT
100-125	1.63 [41.4]	0.25 [6.4]	3.94 [100.0]	1.97 [50.0]	18.50 [470.0]	15.00 [381.0]	1.75 [44.5]	3.25 [82.6]	2.94 [74.7]	1/2-14 NPT
200	2.13 [54.0]	0.50 [12.7]	5.79 [147.0]	2.89 [73.5]	20.50 [520.7]	17.00 [431.7]	1.75 [44.5]	4.13 [105.0]	3.80 [96.5]	1/2-14 NPT
300	2.63 [66.8]	0.50 [12.7]	5.79 [147.0]	2.89 [73.5]	23.50 [597.0]	18.74 [476.0]	2.38 [60.5]	5.13 [130.3]	3.80 [96.5]	1/2-14 NPT



SPECIFICATIONS

Model	2005	
Capacities	klb	1/ 1.5/ 2.5/ 5/ 10/ 15/ 20/ 25/ 35/ 50/ 60/ 75/ 100/ 125/ 200/ 300
Full scale output(FS)	mV/V	3.0±0.25%
Non-linearity	%FS	≤±0.05
Hysteresis	%FS	≤±0.03
Non- repeatability	%FS	≤±0.03
Creep@30min	%FS	≤±0.03
Zero Balance	mV/V	±0.02
Temperature range		
Operating	°C	-10...+40
Terminal resistance	Ω	700±14
Excitation voltage	VDC	10... 15
Insulation resistance@50VDC	MΩ	≥2000
Safe overload limit	%FS	150
Ultimate load	%FS	300
Cable length	m	10(Capacity≤60klb) 18(Capacity≥75klb)
Seal type	IP67	
Element material	Alloy steel	

WIRING



Cable :
 Ø5.1mm, 4 conductor cable (Capacity ≤35klb).
 Ø7.6mm, 4 conductor cable (Capacity ≥50klb).

Dimensions and specifications subject to change without notice