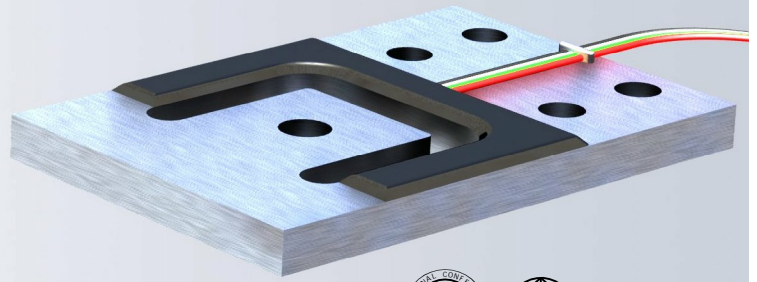


The type GPB is a very low profile load cell. Its unique design allows for great flexibility in scale design.



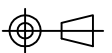
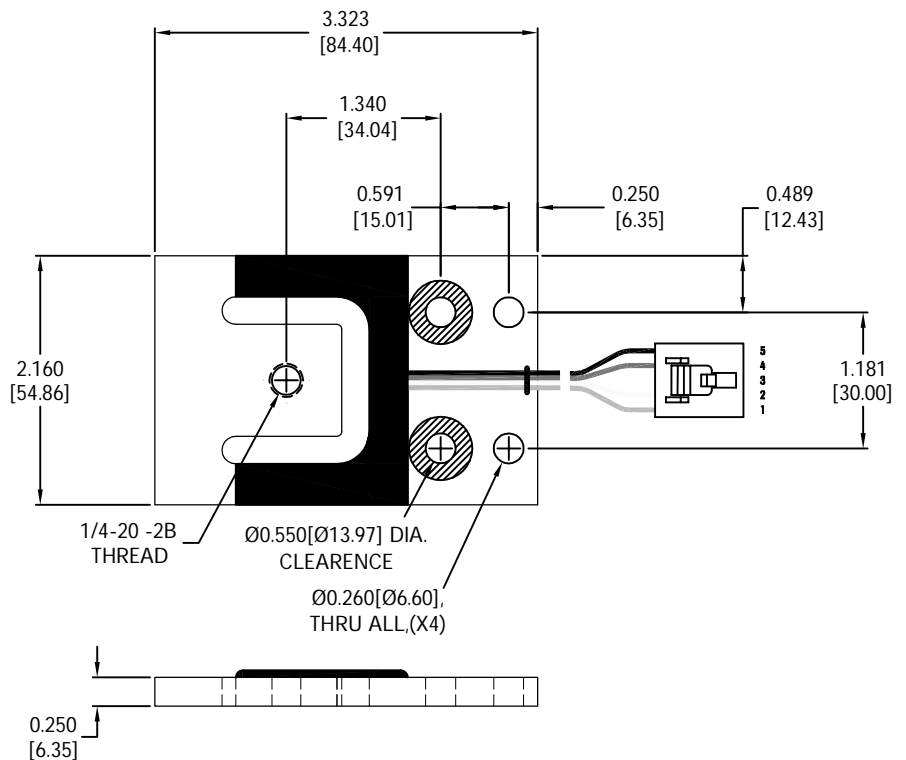
### FEATURES

- Capacity from 75kg to 375kg.
- Aluminium construction.
- Environmental Protection IP65.
- Very low profile design.
- High input resistance.
- Calibration in mV/V/Ω for accuracy class C3.
- OIML and NTEP approved.

### APPLICATIONS

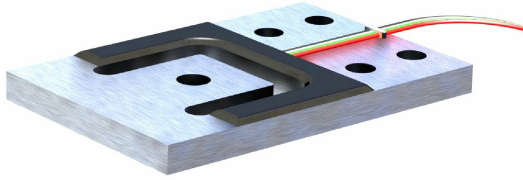
- Compact scales, bench and floor scales, retail and counting scales, special applications in medical and other areas.

### OUTLINE DIMENSIONS

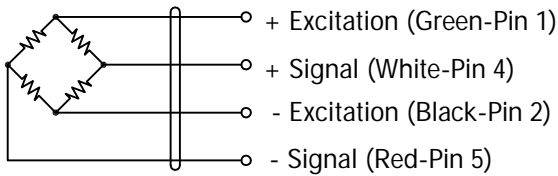


planar beam

# GPB 6001



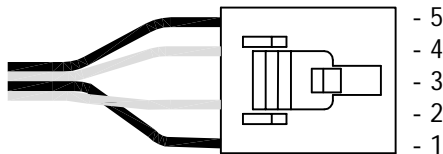
## WIRING



CABLE : 26AWG 26 AWG COLOR CODED AMPHENOL RIBBON CABLE

CONNECTOR : 5CKT IDC CONN 22-26AWG POLAR LATCHING GOLD AMP#103957-4

PIN CONFIGURATION :



## SPECIFICATIONS

Model	6001		
Capacities	kg	75/ 150/ 375	
Full scale output(FS)	mV/V	0.9±0.1%	
Minimum dead load	kg	0	
Calibration in mV/V/Ω	%	±0.05	
Maximum number of loadcell varification intervals (n <sub>max</sub> )		3000	
Combined error	%FS	≤±0.02	
Creep@30min	%FS	≤±0.0166	
Zero Balance	%FS	≤±5	
Temperature effect			
	Output	%FS/10°C	≤±0.01
	Zero	%FS/10°C	≤±0.0187
Temperature range			
	Compensated	°C	-10... +40
	Operating	°C	-10... +65
Terminal resistance			
	Input resistance	Ω	1165±5
	Output resistance	Ω	1000±3
Excitation voltage	VDC	5... 15	
Insulation resistance@50VDC	MΩ	≥5000	
Safe overload limit	%FS	300	
Ultimate load	%FS	400	
Safe side load	%FS	200	
Cable length	m	1.5	
Seal type	IP65		
Element material	Aluminum		

Dimensions and specifications subject to change without notice