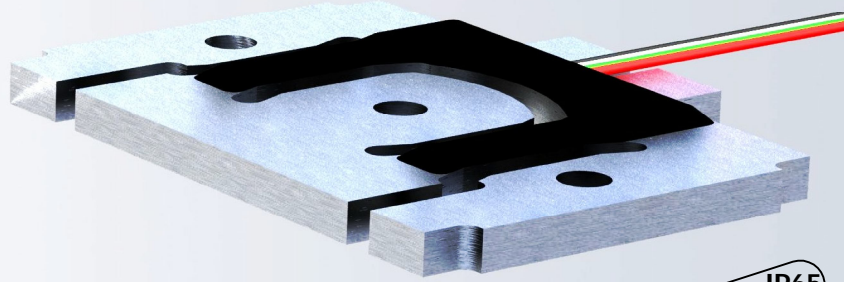


The type HWPB is a very low profile planar beam load cell. Load cell installation is simplified by the winged mounting arms providing optimum load cell performance in all types of scale structure.



IP65

FEATURES

- Capacities from 7.5kg to 100kg.
- Aluminum construction.
- Environmental protection IP65.
- Very low profile design.

APPLICATIONS

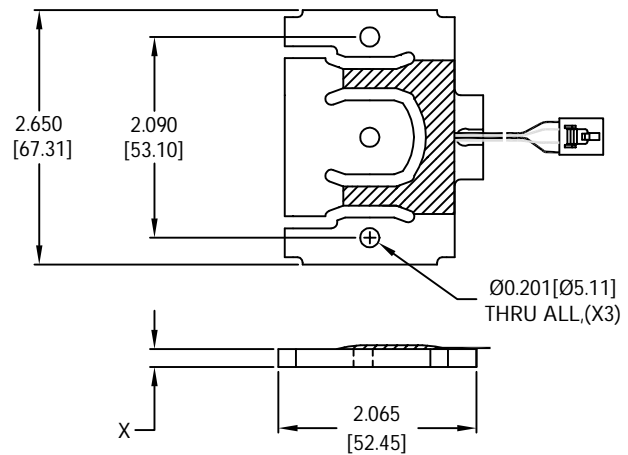
- Compact scales, bench and floor scales, retail and counting scales, special applications in medical and other areas.

OPTIONS

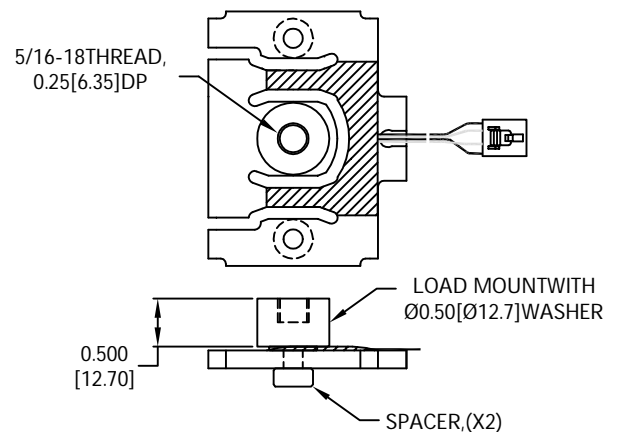
- Shielded cable version.

OUTLINE DIMENSIONS

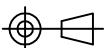
Dimensions :



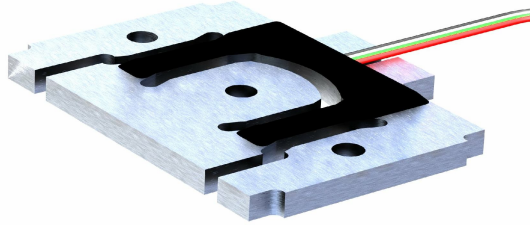
Assembly :



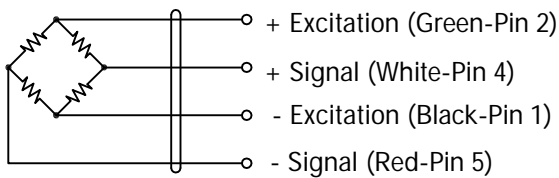
Capacity	7.5kg	15.0kg	20.0kg	37.5kg	50kg	75.0kg	100.0kg	37.5lb	75lb	200lb
X	0.106 [2.69]	0.150 [3.81]	0.160 [4.06]	0.236 [5.99]	0.250 [6.35]	0.313 [7.95]	0.375 [9.53]	0.160 [4.06]	0.190 [4.83]	0.313 [7.95]



planar beam HWPB 6005

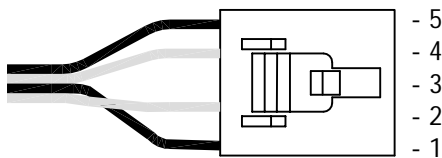


WIRING



Cable : 26AWG Color coded ribbon cable.
Connector : AMP#5-103957-4.

Pin configuration:



SPECIFICATIONS

Model	6005		
Capacities	See table		
Full scale output(FS)	mV/V	0.9±0.1%	
Calibration in mV/V/Ω	%	≤±0.05	
Combined error	%FS	≤±0.02	
Non-linearity	%FS	≤±0.0166	
Hysteresis	%FS	≤±0.0166	
Creep@30min	%FS	≤±0.06	
Zero Balance	%FS	≤±5	
Temperature effect			
	Output	%FS/°C	≤±0.04
	Zero	%FS/°C	≤±0.02
Temperature range			
	Compensated	°C	-10... +40
	Operating	°C	-10... +65
Terminal resistance			
	Input resistance	Ω	1165±10
	Output resistance	Ω	1000±5
Excitation voltage	VDC	5... 15	
Insulation resistance@50VDC	MΩ	≥5000	
Safe overload limit	%FS	300	
Ultimate load	%FS	400	
Cable length	in	18	
Seal type	IP65		
Element material	Aluminum		

Dimensions and specifications subject to change without notice