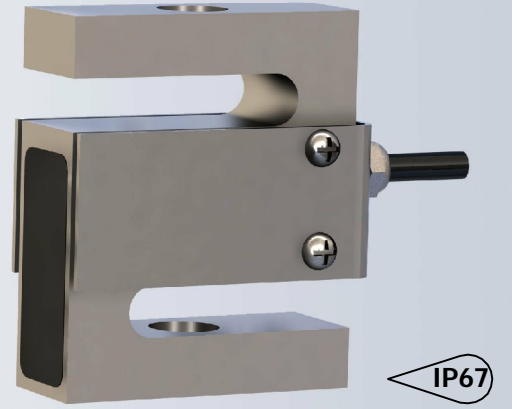


The type 3005 is a stainless steel load cell design for measuring tension or compression loads.



IP67

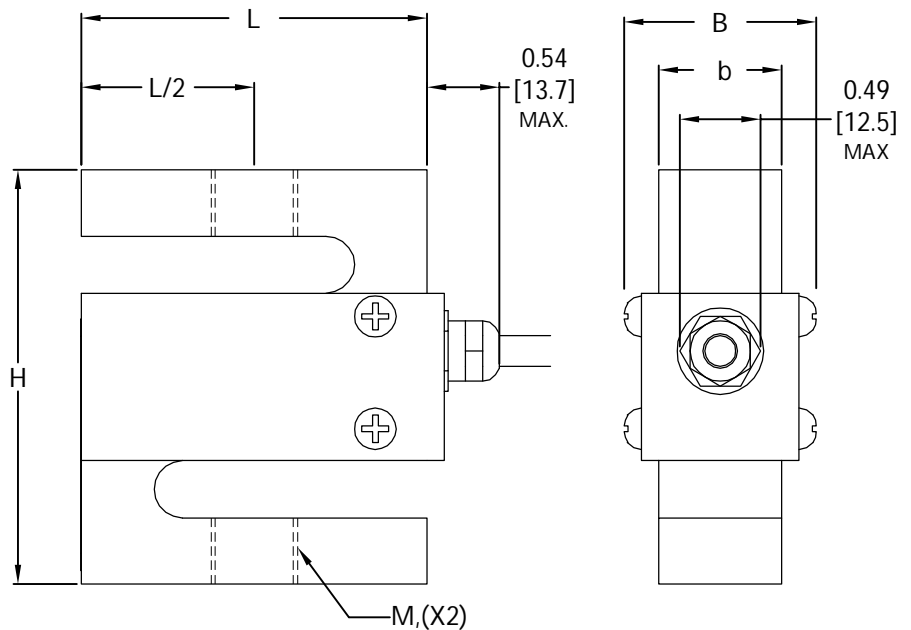
**FEATURES**

- Wide range of capacities from 100lb to 10klb.
- Stainless steel construction.
- Environmentally protected to IP67.

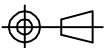
**APPLICATIONS**

- Crane scales and hanging scales, small hopper and tank weighing systems, hybrid systems with lever work, belt weighers and other load carriers with multiple load cells.

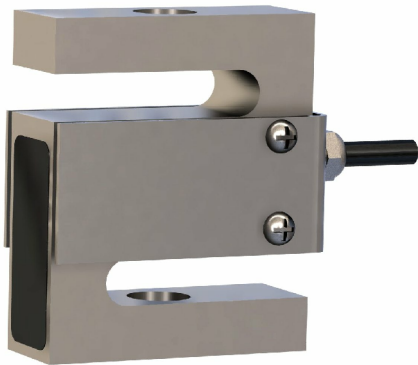
**OUTLINE DIMENSIONS**



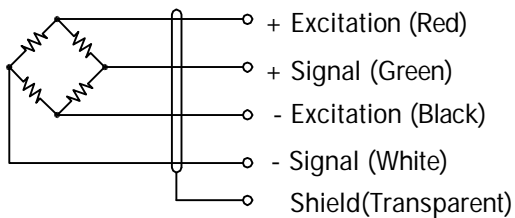
| Capacity      | L          | H           | b           | B          | M                    |
|---------------|------------|-------------|-------------|------------|----------------------|
| 100lb - 200lb | 2.00[50.8] | 2.40[60.96] | 0.46[11.68] | 0.86[21.8] | 1/4-28UNF [M8X1.25]  |
| 500lb- 1klb   | 2.00[50.8] | 2.40[60.96] | 0.71[18.03] | 1.11[28.2] | 1/2-20UNF [M12X1.75] |
| 2klb          | 2.00[50.8] | 2.40[60.96] | 0.96[24.38] | 1.36[34.5] | 1/2-20UNF [M12X1.75] |
| 5klb          | 3.00[76.2] | 3.90[99.06] | 0.96[24.38] | 1.36[34.5] | 3/4-16UNF [M20X1.5]  |
| 10klb         | 3.00[76.2] | 3.90[99.06] | 0.96[24.38] | 1.36[34.5] | 3/4-16UNF [M20X1.5]  |



# s-beam 3005



## WIRING



Cable : 24 AWG, 4 Conductor foil shielded black cable.

## SPECIFICATIONS

|                             |                   |               |            |
|-----------------------------|-------------------|---------------|------------|
| Model                       | 3005              |               |            |
| Accuracy class              | C3                |               |            |
| Capacities                  | lb                | 100/ 200/ 500 |            |
|                             | klb               | 1/ 2/ 5/ 10   |            |
| Full scale output(FS)       | mV/V              | 3.0±0.008     |            |
| Combined error              | %FS               | ≤±0.04        |            |
| Non-linearity               | %FS               | ≤±0.03        |            |
| Non- repeatability          | %FS               | ≤±0.01        |            |
| Creep@30min                 | %FS               | ≤±0.03        |            |
| Zero Balance                | %FS               | ±1.0          |            |
| Temperature effect          |                   |               |            |
|                             | Output            | %FS/10°C      | ≤±0.014    |
|                             | Zero              | %FS/10°C      | ≤±0.017    |
| Temperature range           |                   |               |            |
|                             | Compensated       | °C            | -10... +40 |
|                             | Operating         | °C            | -35... +65 |
| Terminal resistance         |                   |               |            |
|                             | Input resistance  | Ω             | 386±5      |
|                             | Output resistance | Ω             | 350±3      |
| Excitation voltage          | VDC               | 15(Max)       |            |
| Insulation resistance@50VDC | MΩ                | ≥5000         |            |
| Safe overload limit         | %FS               | 150           |            |
| Ultimate load               | %FS               | 300           |            |
| Cable length                | ft                | 20            |            |
| Seal type                   | IP67              |               |            |
| Element material            | Stainless steel   |               |            |

Dimensions and specifications subject to change without notice