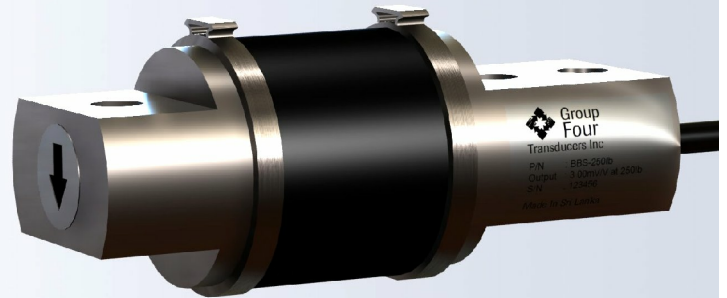


The type BBS single ended bending beam loadcell is ideally suited for small bin and hopper weighing applications as well as for use in conveyor scales.



**FEATURES**

- Capacity 250lb.
- Alloy steel construction.
- Environmentally sealed with neoprene sleeve, IP67.

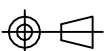
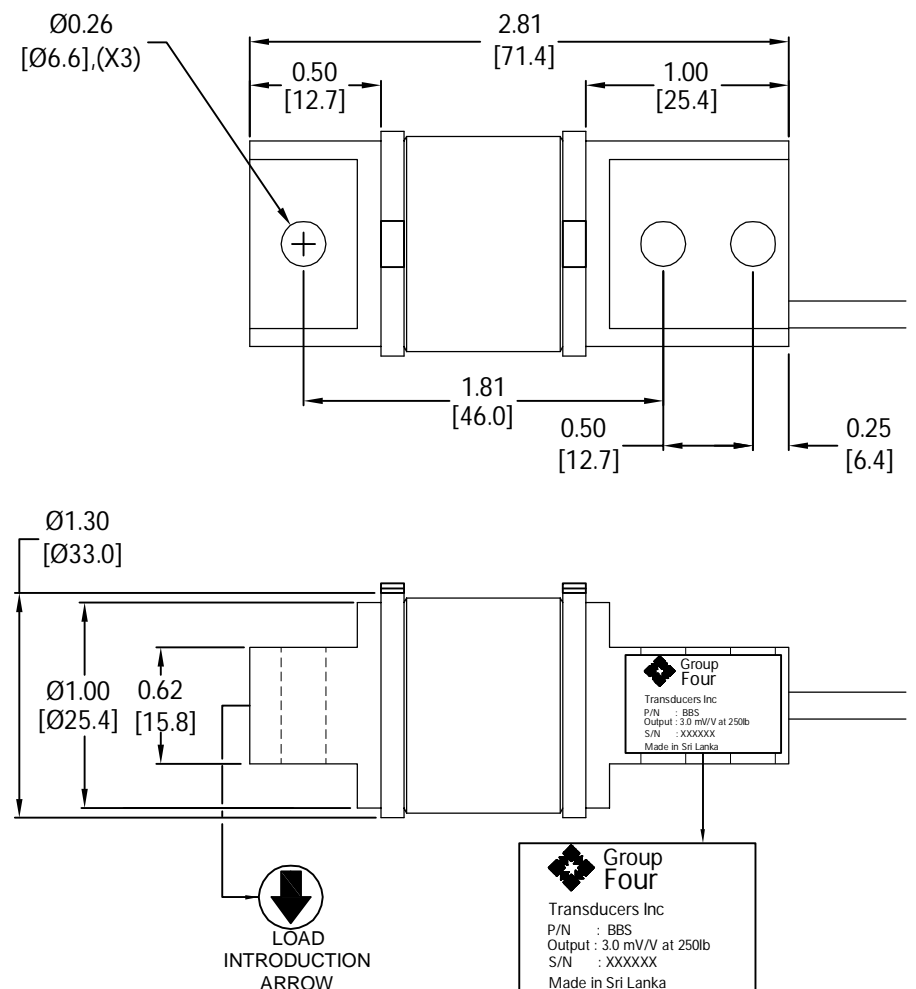
**APPLICATIONS**

- Small hopper scales.
- Filling systems.
- Bench scales.

**OPTIONS**

- BBA -Aluminum version.
- BBH -Hermetically sealed version.

**OUTLINE DIMENSIONS**

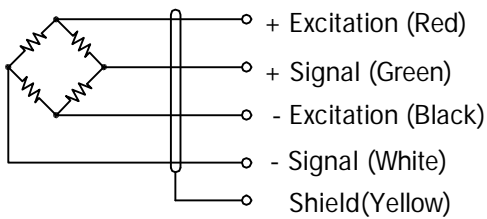


bending beam

# BBS 1018



## WIRING



Cable : 24 AWG, 4 Conductor cable.

## SPECIFICATIONS

Model	1018		
Capacities	lb	250	
Full scale output(FS)	mV/V	3.0±0.1%	
Calibration in	mV/V/Ω	≤±0.05%	
Non-linearity	%FS	≤±0.03	
Hysteresis	%FS	≤±0.04	
Creep@20min	%FS	≤±0.03	
Zero balance	%FS	≤±1.0	
Terminal Resistance			
	Input	Ω	385±5
	Output	Ω	350±3
Excitation voltage	VDC	10... 15	
Insulation resistance@50VDC	MΩ	≥5000	
Nominal temperature range	°C	-18... +65	
Safe overload limit	%FS	150	
Cable length	ft	3	
Seal type	IP67		
Element material	Alloy steel		

Dimensions and specifications subject to change without notice