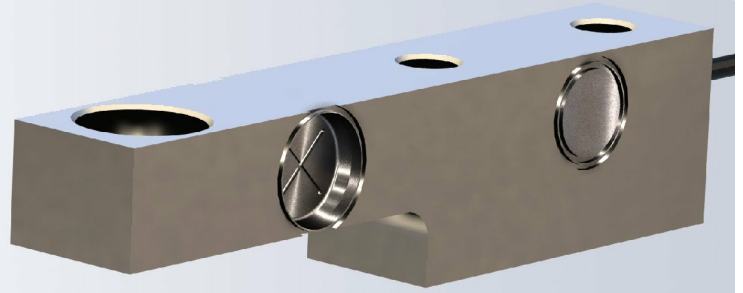


The type SB32 is a stainless steel shear beam type load cell. It is a perfect fit for use in harsh industrial environments.



IP68

### FEATURES

- Capacities from 1klb to 5klb
- Stainless steel construction
- Environmental protection IP68

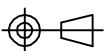
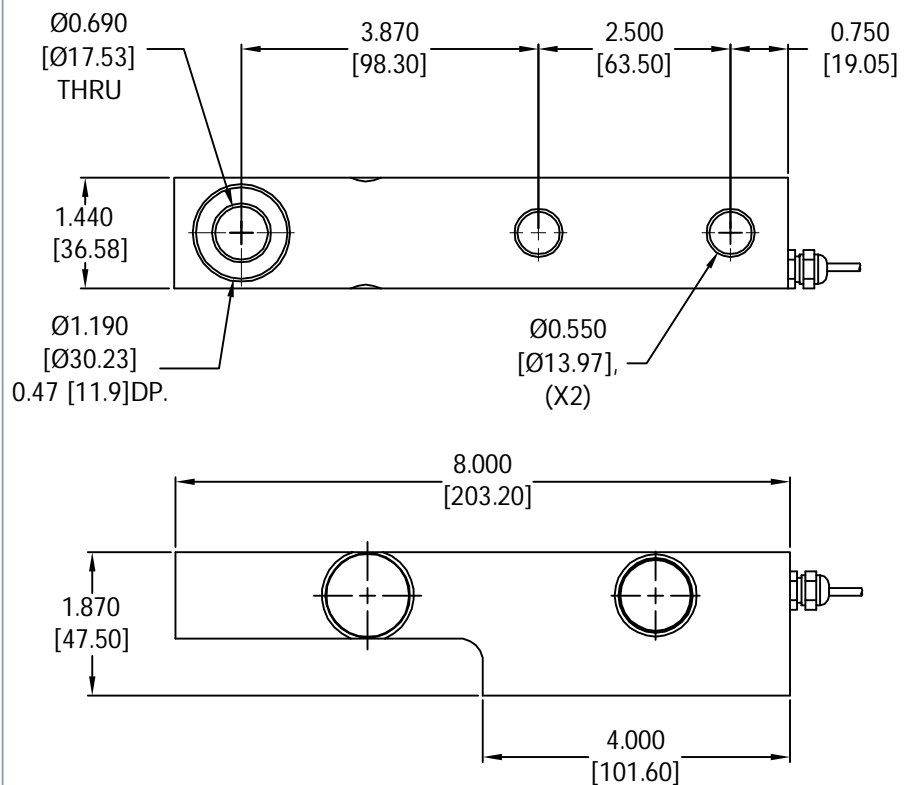
### APPLICATIONS

- Platform scales, hopper and tank scales

### OPTIONS

- mV/V/Ω Calibration to ±0.05% for applications with multiple load cells
- Plated steel version

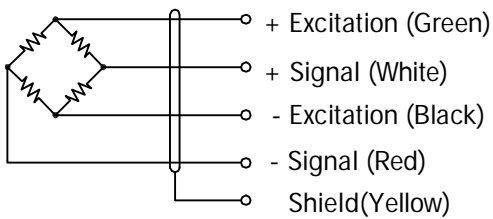
### OUTLINE DIMENSIONS



shear beam  
**SB32**  
**1020**



**WIRING**



- Load cell is provided with 24AWG, 4-conductor foil shielded black cable

**SPECIFICATIONS**

Model	SB32		
Capacities	klb	1/ 2/ 5	
Full scale output(FS)	mV/V	2.0±1%	
Calibration in mV/V/Ω	%	See Options	
Non-linearity	%FS	≤±0.023	
Hysteresis	%FS	≤±0.023	
Non- repeatability	%FS	≤±0.023	
Creep@30min	%FS	≤±0.03	
Zero Balance	mV/V	±0.02	
Temperature effect			
	Output	%FS/10°C	≤±0.02
	Zero	%FS/10°C	≤±0.04
Temperature range			
	Compensated	°C	-10... +40
	Operating	°C	-20... +65
Terminal resistance			
	Input resistance	Ω	386±10
	Output resistance	Ω	350±5
Excitation voltage	VDC	10... 15	
Insulation resistance@50VDC	MΩ	≥2000	
Safe overload limit	%FS	150	
Ultimate load	%FS	300	
Cable length	ft	15	
Seal type	IP68		
Element material	Stainless steel		
Bolt torque	Nm	90	

**PART NUMBERS**

Capacity (klb)	Part #
1	1020-000-01
2	1020-001-02
5	1020-002-04

Dimensions and specifications subject to change without notice



Group Four Transducers  
22 Deer Park Drive,  
E. Longmeadow, MA 01028  
www.groupfourtransducers.com

Phone : (800) 419 1444  
Fax : (413) 525 -6182  
sales@group-4.com