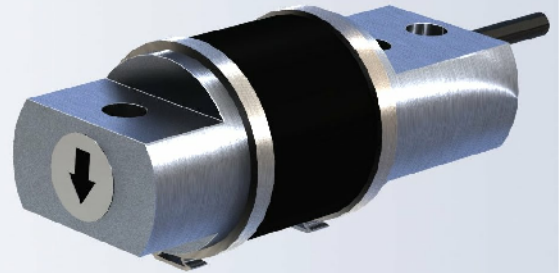


The BBA is a single ended bending beam. Ideal for use in packaging and filling machines.



FEATURES

- Capacity 250lb.
- Anodized Aluminum construction.
- Environmentally sealed with neoprene sleeve, IP67.

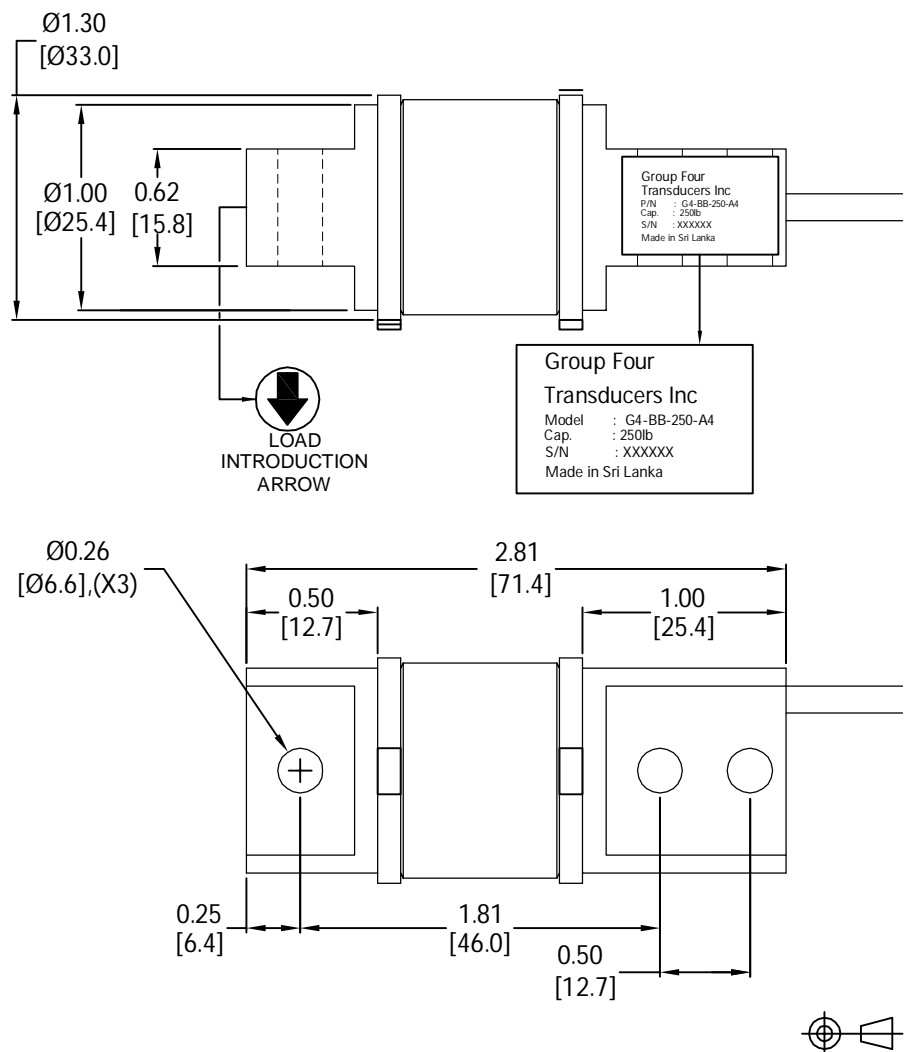
APPLICATIONS

- Small hopper scales.
- Filling systems.
- Bench scales.

OPTIONS

- BBS -Stainless steel version.
- BBH -Hermetically sealed version.

OUTLINE DIMENSIONS

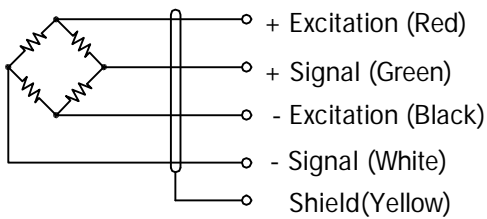


bending beam

BBA 1026



WIRING



Cable : 24 AWG, SS Braided foil shielded,
4 Conductor cable with drain wire,
including grounding lug.

SPECIFICATIONS

Model	1026		
Capacities	lb	250	
Full scale output(FS)	mV/V	3.0±0.15	
Non-linearity	%FS	≤±0.03	
Hysteresis	%FS	≤±0.05	
Creep@20min	%FS	≤±0.03	
Zero balance	%FS	≤±1.0	
Terminal Resistance			
	Input	Ω	385±5
	Output	Ω	350±3
Excitation voltage	VDC	10... 15	
Insulation resistance@50VDC	MΩ	≥5000	
Nominal temperature range	°C	-20... +60	
Safe overload limit	%FS	150	
Cable length	in	67	
Seal type	IP67		
Element material	Anodized Aluminum		
Mounting bolt	1/4" Grade 5-8		
Required torque	150in.lbs		

Dimensions and specifications subject to change without notice