

The substantial size, stainless steel construction, and protective cover were specifically designed for harsh, abusive environments. The location of the mounting holes allows for scale frame mounting that provides additional side load protection.



FEATURES

- Capacities 125lb, 250lb.
- Environmental Protection IP67.

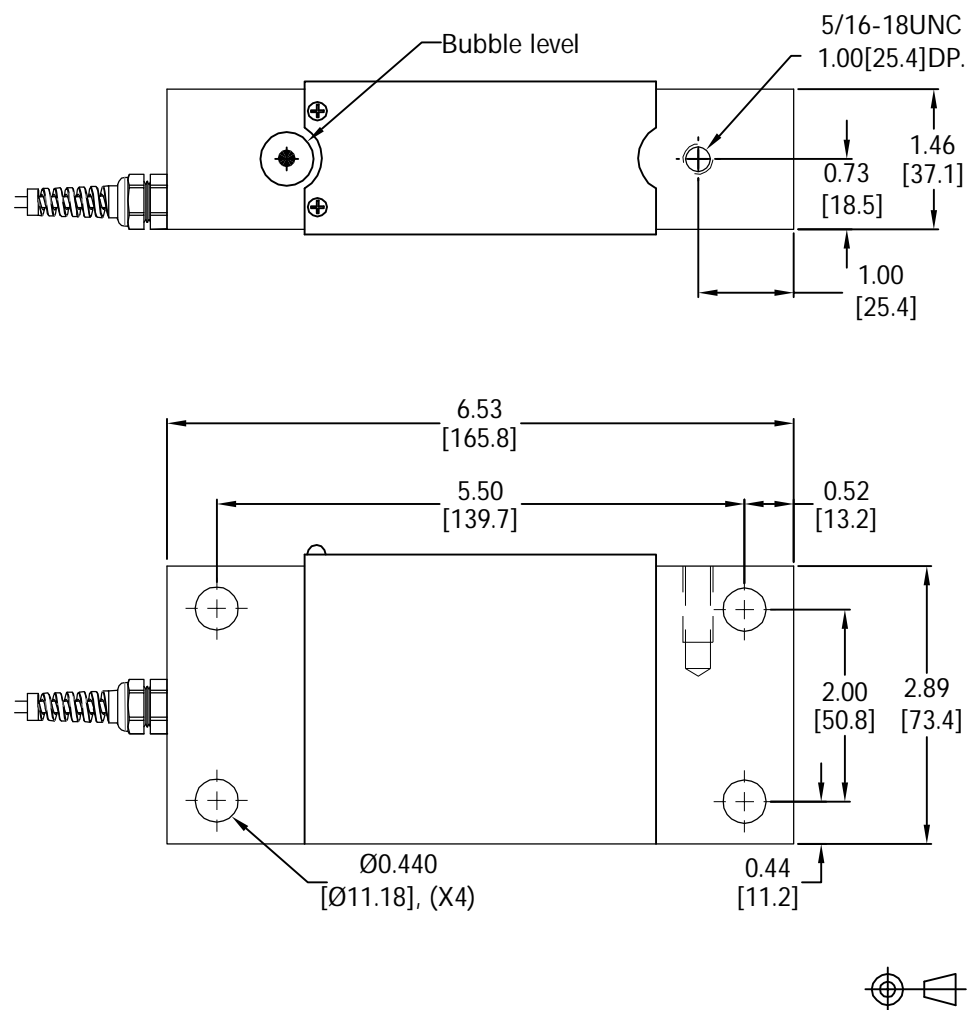
APPLICATIONS

- Bench scales, Food processing systems.

OPTIONS

- mV/V/ Ω Calibration matching.

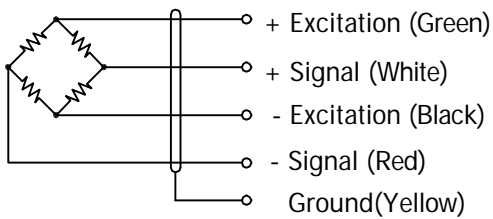
OUTLINE DIMENSIONS



single point 4041



WIRING



Cable : 22 AWG, 4-Conductor cable with ground wire.

SPECIFICATIONS

Model	4041		
Capacities	lb	125/ 250	
Full scale output(FS)	mV/V	0.998~1.002	
Calibration in mV/V/ Ω	%	See options	
Combined error	%FS	$\leq \pm 0.05$	
Non-linearity	%FS	$\leq \pm 0.02$	
Hysteresis	%FS	$\leq \pm 0.03$	
Non- repeatability	%FS	$\leq \pm 0.03$	
Creep@30min	%FS	$\leq \pm 0.03$	
Zero Balance	%FS	$\leq \pm 2$	
Temperature range			
	Operating	$^{\circ}\text{C}$	-20... +60
Terminal resistance			
	Input resistance	Ω	450 ± 100
	Output resistance	Ω	350 ± 5
Excitation voltage	VDC	10... 15	
Insulation resistance@50VDC	M Ω	≥ 3000	
Safe overload limit	%FS	150	
Cable length	ft	10	
Seal type	IP67		
Element material	Stainless steel		

Dimensions and specifications subject to change without notice