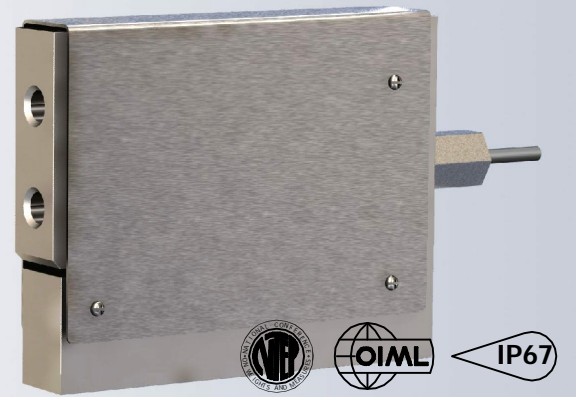


The 4047 is a stainless steel, single point load cell with a "triple beam" shear section. The advantage to of this design is the load cell is more resilient to side loads commonly found in conveyor scales and large bench scales. With the IP67 moisture protection, this load cell will perform consistently in outdoor and wet environments. This cell is NTEP approved and legal-for-trade.



FEATURES

- Capacities from 100lb to 1000lb.
- Stainless steel construction.
- Environmental Protection IP67.
- OIML approval to C3, 3000 division, multiple error band.
- NTEP approval to Class III, 3000 division, multiple error band.
- HI-POT Test is performed at 600VAC for 1 sec.

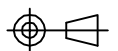
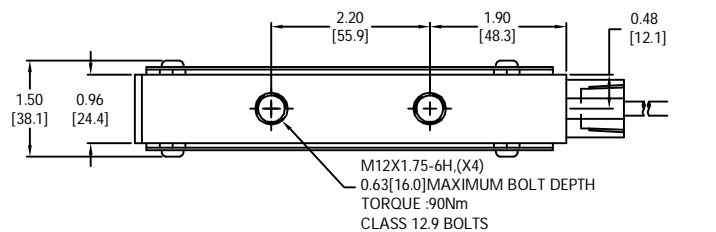
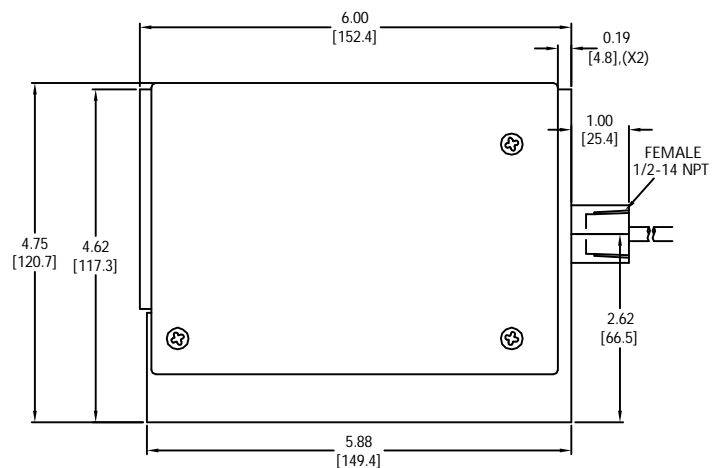
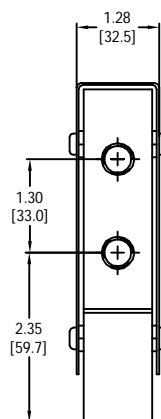
APPLICATIONS

- Conveyor scales, large bench scales.

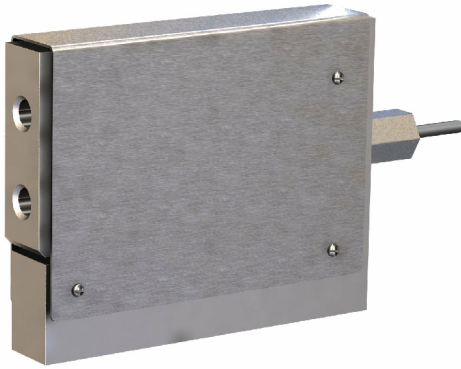
OPTIONS

- Hermetically sealed IP69k version.

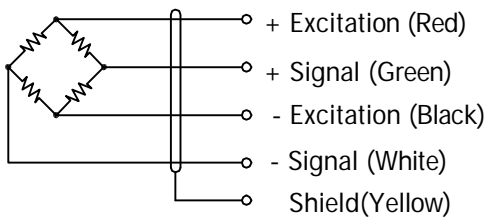
OUTLINE DIMENSIONS



single point 4047



WIRING



Cable : 22 AWG, 4 Conductor PU black foil shielded cable with drain wire.

SPECIFICATIONS

Model	4047		
Accuracy class	C3		
Maximum number of verification intervals	n	3000	
Minimum load cell verification interval	Vmin	Emax/11500	
Capacities	lb	100/ 250/ 500/ 750/ 1000	
Full scale output(FS)	mV/V	2.000- 2.002	
Combined error	%FS	≤±0.02	
Non- repeatability	%FS	≤±0.01	
Creep@30min	%FS	≤±0.024	
OCLS			
	Max.offcenter distance	in	3
	OCLS error	mV/V	≤±0.0010@25lb
Zero Balance	%FS	± 1	
Temperature effect			
	Output	%LOAD/°C	≤±0.0011
	Zero	%FS/°C	≤±0.0011
Temperature range			
	Compensated	°C	-10... +40
	Operating	°C	-40... +85
Terminal resistance			
	Input resistance	Ω	450±100
	Output resistance	Ω	350±5
Excitation voltage	VDC	10... 15	
Insulation resistance@50VDC	MΩ	≥5000	
Safe overload limit	%FS	200	
Ultimate load	%FS	300	
Safe side load	%FS	100	
Cable length	ft	11	
Seal type	IP67		
Element material	Stainless steel		
Bolt torque	Nm	90	

Dimensions and specifications subject to change without notice