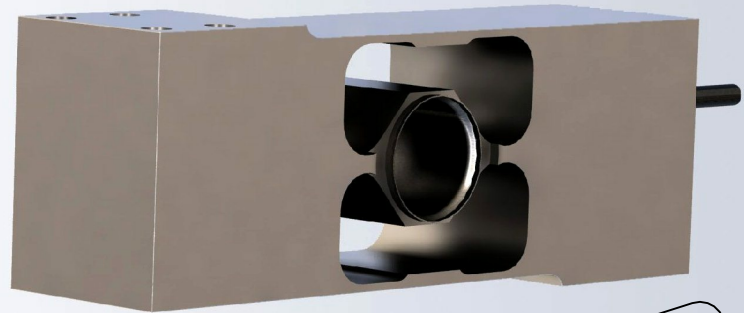


The type 4083 is a stainless steel hermetically sealed single point load cell, ideal for large bench scales, conveyor scales, filling machines, weigh feeders and for use in heavy washdown applications.



IP69

FEATURES

- Capacities from 10kg to 300kg.
- Stainless steel construction.
- Environmental Protection IP69.
- Maximum platform size up to 24in x 24in.

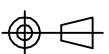
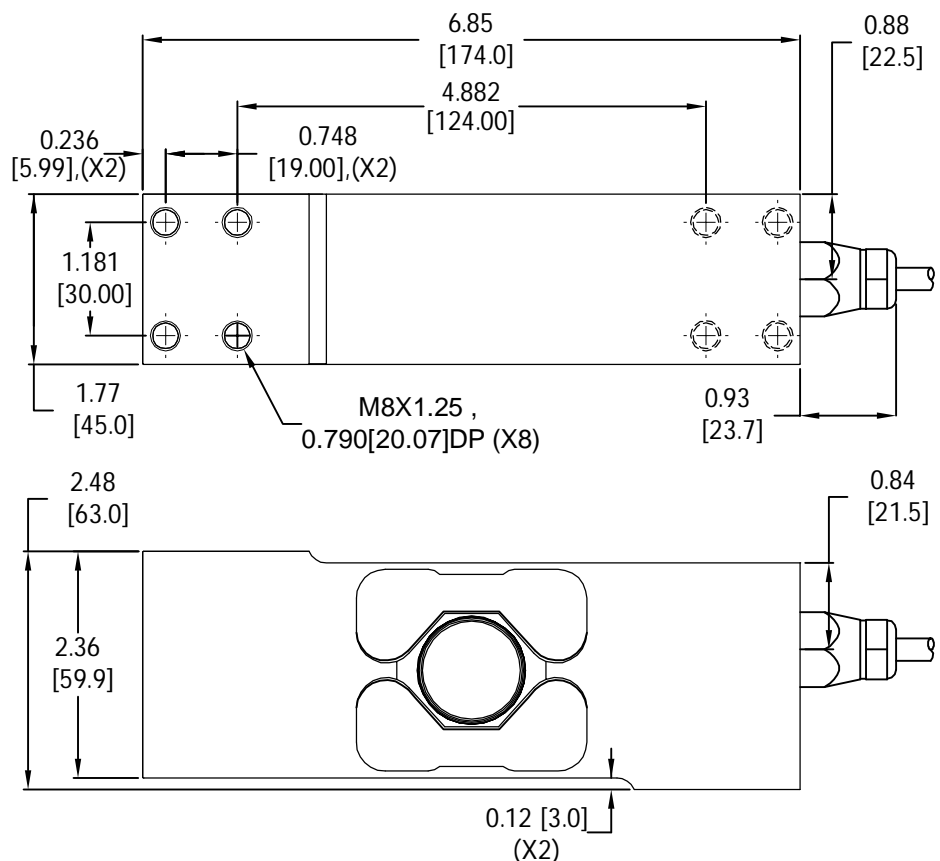
APPLICATIONS

- Bench scales, Floor scales, Conveyor scales, Filling machines, Weigh feeders and Medical scales.

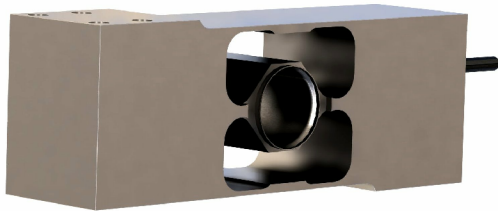
OPTIONS

- Nickel plated alloy steel version.

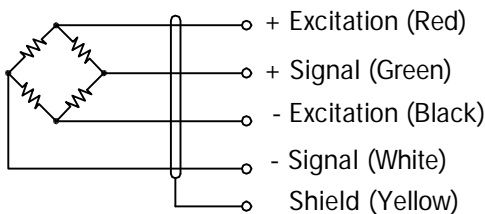
OUTLINE DIMENSIONS



single point SP46H 4083



WIRING



Cable : 24 AWG, 4 Conductor cable with shield.

SPECIFICATIONS

Model		4083	
Accuracy class		C3	
Capacities	kg	10/ 20/ 30/ 50/ 100/ 200/ 300	
Full scale output (FS)	mV/V	2.0±5%	
Combined error	%FS	≤±0.02	
Creep @ 30min	%FS	≤±0.017	
OCLS			
	Max platform size	in	24 x 24
	Max off-center distance	in	8.5
	OCLS Error @ 1/3 of RL	%FS/in	≤±0.0028
Zero balance	%FS	≤±1	
Temperature range			
	Compensated	°C	-10... +40
	Operating	°C	-40... +70
Terminal resistance			
	Input resistance	Ω	385±10
	Output resistance	Ω	350±5
Excitation voltage	VDC	10... 15	
Insulation resistance @ 50V DC	MΩ	≥5000	
Maximum safe moment	kg.cm	30x Rated Capacity	
Safe overload limit	%FS	150	
Ultimate load	%FS	200	
Weight	kg	2.5	
Cable length	m	3	
Seal type	IP69		
Element material	Stainless steel		

Notes : OCLS - Off Center Load Sensitivity.

PART NUMBERS

Capacities (kg)	Part #
10	4083-000-00
20	4083-001-00
30	4083-002-00
50	4083-003-00
100	4083-004-00
200	4083-005-00
300	4083-006-00

Dimensions and specifications subject to change without notice