

The GWLS wireless loadshackle is another entry to the group four wireless load cell product line. 700 meters of data transmission range. The GWLS is available in capacities from 3.25 to 400 ton.



FEATURES

- Proprietary 2.4 GHz wireless.
- Error free data transmission.
- Environmentally sealed.
- Internal antennae.
- Remote on/off.
- Industry leading wireless range.
- Unrivalled resolution.
- Unmatched battery life.
- Low headroom.
- Lightweight.
- Each WLS is supplied with a load-centring bobbin.
- Design validated by F.E.A.
- Monitoring software for data, collection and display of up to 100 load cells.

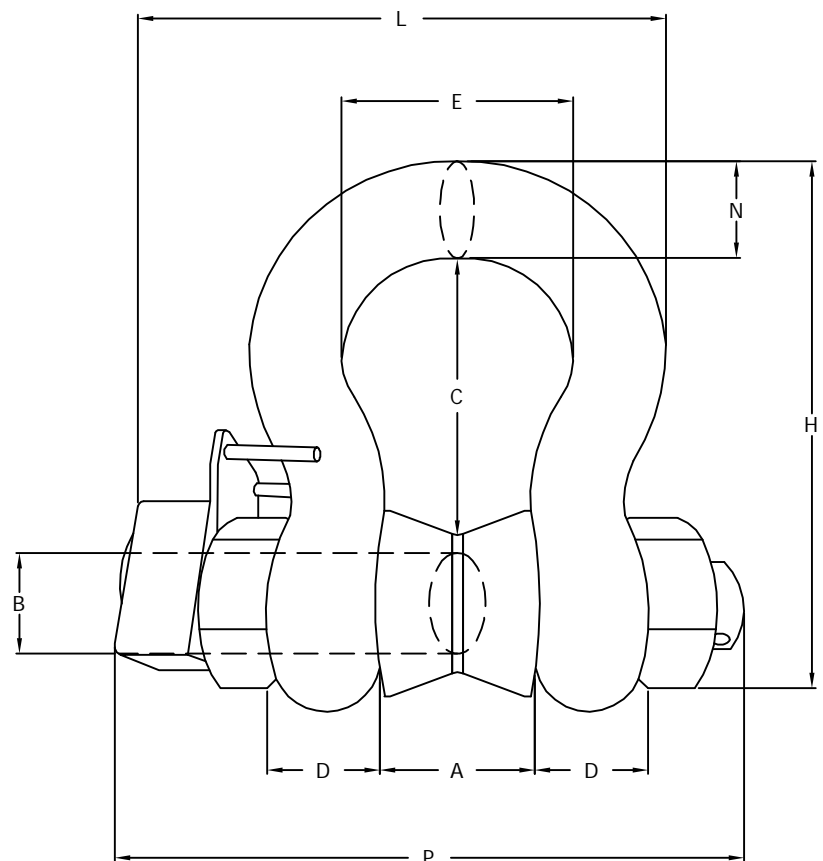
APPLICATIONS

- Limited headroom applications.

OPTIONAL ACCESSORIES

- A full array of wireless accessories are also available including signal boosters, LED wireless scoreboards and base stations with analogue (4-20mA, 0-10v, 0-5v) or digital (RS232/485, Modbus RTU, and ASCII serial communications protocol) outputs.

OUTLINE DIMENSIONS



group four wireless loadshackle

GWLS



OUTLINE DIMENSIONS

	3.25t	6.5t	12t	25t	55t	85t	120t	200t	300t	400t
A	26.9	36.6	51.5	73	82.5	105	127	180	205	230
B	19.1	25.4	35.1	51	57	70	82.5	125	150	175
C	60.5	84	119	178	197	267	330	334	398	440
D	16	22.4	31.8	44.5	51	66.5	76	120	130	165
E	42.9	58	82.5	127	164	184	200	290	305	325
H	106	148	210	313	348	453	546	810	950	1100
L	132	158	196	281	306	368	408	580	615	705
N	17.5	24.6	35.1	57	61	79	92	120	130	165
P	148	180	218	293	317	394	441	570	620	715

Note : All dimensions are in mm

SPECIFICATIONS

Model	GWLS									
Capacity	3.25t	6.5t	12t	25t	55t	85t	120t	200t	300t	400t
Resolution	0.005t	0.005t	0.01t	0.02t	0.05t	0.05t	0.1t	0.2t	0.5t	0.5t
Weight	2.8kg	3.2kg	8kg	18kg	25kg	45kg	85kg	254kg	374kg	614kg
Safety factor	5:1 when used with load bobbin									
Battery type	Load cell 4X AA Alkaline									
Battery life	Load cell 1200 hours continuous									
Operating Temp	-10... +50°C									
Accuracy	±1% of applied load									
Frequency	2.4GHz									
System range	700 meters									
Data rate	3 updates per second									
Protection	IP67									

Note : Larger capacities up to 1000t (price on application)

Dimensions and specifications subject to change without notice