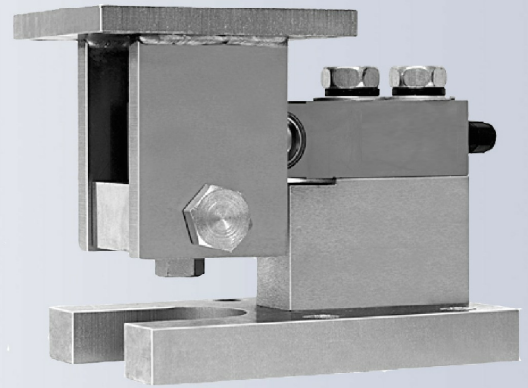


The 1000 WM2 is a universally accepted Weigh Module. Designed to allow for easy alignment and tank expansion.



FEATURES

- Capacities from 100lb to 10000lb.
- Alloy steel construction.

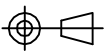
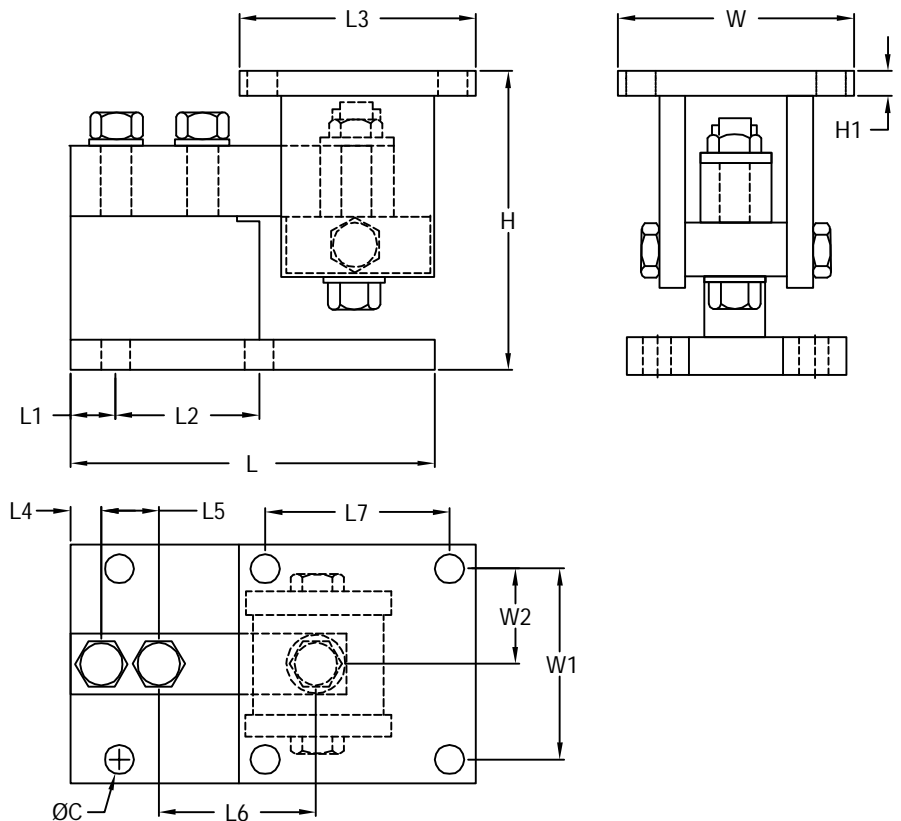
APPLICATIONS

- Conveyors, Medium-capacity tanks and hoppers.

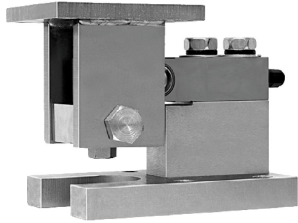
OPTIONS

- Nickel plated mild steel / stainless steel versions.

OUTLINE DIMENSIONS



weigh module
1000WM2



OUTLINE DIMENSIONS

Rated Capacity(lb)	C	Hmin/max	H1	L	L1	L2	L3	L4	L5	L6	L7	W	W1	W2
100.. 4000;SE5000	0.63	5.25/5.56	0.50	5.98	0.67	2.00	5.04	15.80	1.00	3.00	4.02	5.04	4.02	2.01
5000...10000	0.63	6.12/6.62	0.50	7.76	1.06	2.99	5.04	19.10	1.50	3.75	4.02	5.04	4.02	2.01

Metric conversion of above table (kg/mm)

Rated Capacity(kg)	C	Hmin/max	H1	L	L1	L2	L3	L4	L5	L6	L7	W	W1	W2
45.4 ..1,814.4;SE2,268	16.0	133.4/ 141.2	12.7	152.0	17.0	50.8	128.0	401.3	25.4	76.2	102.1	128.0	102.1	51.1
2,268 ..4,535.9	16.0	155.5/ 168.2	12.7	197.0	27.0	75.9	128.0	485.1	38.1	95.3	102.1	128.0	102.1	51.1

Dimensions and specifications subject to change without notice