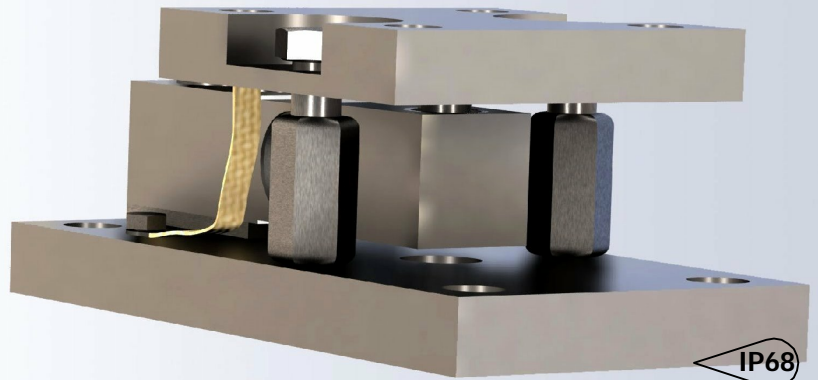


The type **RB14-WM 1000WM3** alloy steel, hermetically sealed weigh module is ideal for tank, bin and hopper weighing.



FEATURES

- Capacity range: 500lb to 5000lb.
- Alloy steel construction.
- Environmental Protection IP68.
- Optimized structure design for easy installation.
- Low profile design.

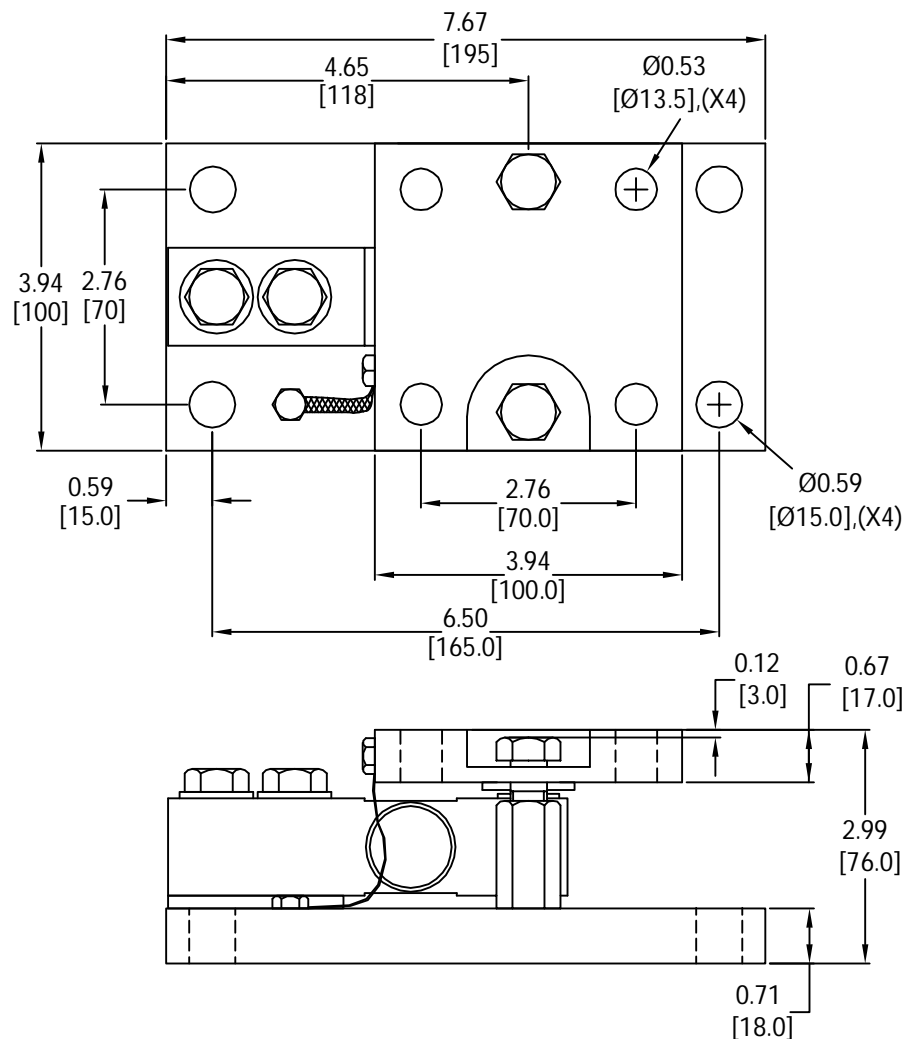
APPLICATIONS

- Especially designed for hopper, mixer and platform scales.

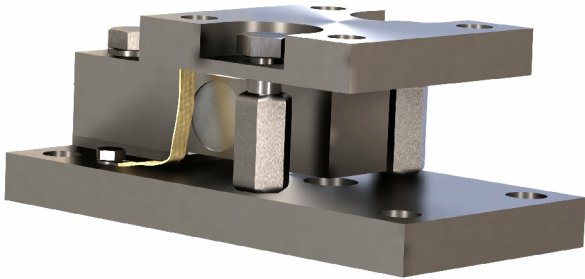
OPTIONS

- 1000WM5 : Stainless steel version.

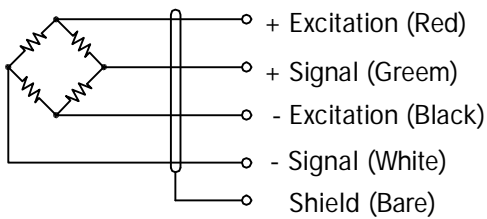
OUTLINE DIMENSIONS



weighing module 1000WM3



WIRING



Cable :5.1mm dia. 4 Conductor cable.

SPECIFICATIONS

Model	1000WM3		
Capacities	lb	500 - 5000	
Full scale output (FS)	mV/V	2.0±0.25%	
Non-linearity	%FS	≤±0.023	
Hysteresis	%FS	≤±0.023	
Non- repeatability	%FS	≤±0.023	
Creep @ 30min	%FS	≤±0.030	
Zero balance	mV/V	±0.06	
Temperature range			
	Operating	°C	-10... +40
Terminal Resistance			
	Input resistance	Ω	386±10
	Output resistance	Ω	350±5
Excitation voltage	VDC	10... 15	
Insulation resistance @ 50V DC	MΩ	≥2000	
Safe overload limit	%FS	150	
Ultimate load	%FS	300	
Cable length	m	6	
Seal type	IP68		
Element material	Alloy steel		

Dimensions and specifications subject to change without notice