

The RB3-SS is a Stainless Steel Single Ended Shear Beam. Ideal for use in Floor Scales and Tank Weighing Systems.



FEATURES

- Capacities from 500lb to 20klb.
- Stainless Steel Construction.
- Environmental Protection IP68.

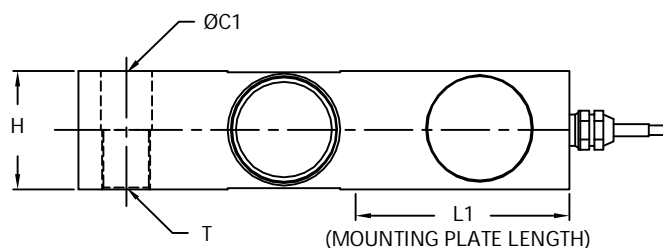
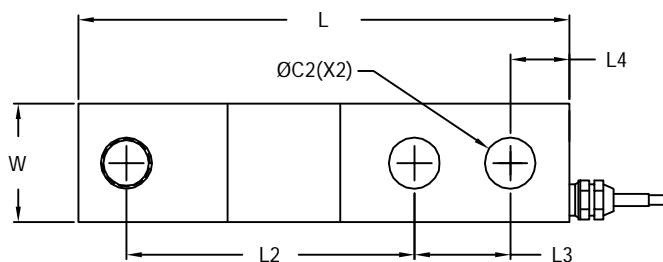
APPLICATIONS

- Floor Scales and Tank Weighing Systems.

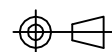
OPTIONS

- Full Scale Output - 2mV/V Version.
- RB3-NP(1003): Plated Steel Version.
- Service Temperature Range up to 120°C [248°F].
- Through Mounting Hole.
- 6-Wire Circuit.
- Hermetic Sealed. Glass to Metal Connector.

OUTLINE DIMENSIONS



Rated Capacity(lb)	C1	C2	H	L	L1	L2	L3	L4	W	T
500-4000	0.53 [13.5]	0.53 [13.5]	1.22 [31.0]	5.12 [130.0]	2.25 [57.2]	3.00 [76.2]	1.00 [25.4]	0.62 [15.8]	1.22 [31.0]	1/2-20UNF-2B
5000-10000	0.79 [20.0]	0.79 [20.0]	1.50 [38.1]	6.75 [171.5]	3.00 [76.2]	3.75 [95.3]	1.50 [38.1]	0.75 [19.1]	1.50 [38.1]	3/4-16UNF-2B
15000-20000	1.03 [26.2]	1.03 [26.2]	2.00 [50.8]	8.75 [222.3]	4.00 [101.6]	4.75 [120.7]	2.00 [50.8]	1.00 [25.4]	2.00 [50.8]	1-14 UNS-2B

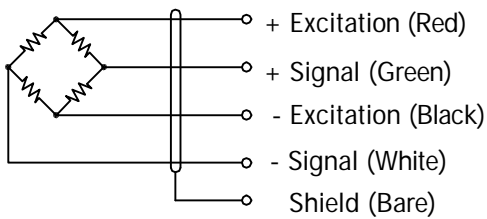


single ended shear beam

RB3SS 1006



WIRING



Cable: Ø5.1mm, 4 Conductor Cable.

SPECIFICATIONS

Model	1006	
Capacities	lb	500/ 1k/ 2.5k/ 4k/ 5k/ 10k/ 20k
Full Scale Output (FS)	mV/V	3±0.25%
Non-Linearity	%FS	≤±0.023
Hysteresis	%FS	≤±0.023
Non- Repeatability	%FS	≤±0.023
Creep @ 30min	%FS	≤±0.03
Zero Balance	mV/V	≤±0.06
Temperature Range		
	Operating	°C -10... +40
Bridge Resistance	Ω	350±7
Excitation Voltage	VDC	10... 15
Insulation Resistance @50V DC	MΩ	≥2000
Safe Overload Limit	%FS	150
Ultimate Load	%FS	300
Cable Length	m	6
Seal Type	IP68-Welded Seal	
Element Material	Stainless Steel	

Dimensions and specifications subject to change without notice