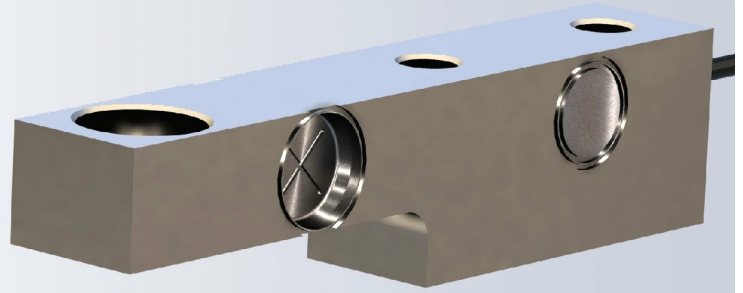


The type SB32 is a stainless steel shear beam type load cell. It is a perfect fit for use in harsh industrial environments.



FEATURES

- Capacities from 1klb to 5klb
- Stainless steel construction
- Environmental protection IP68

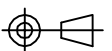
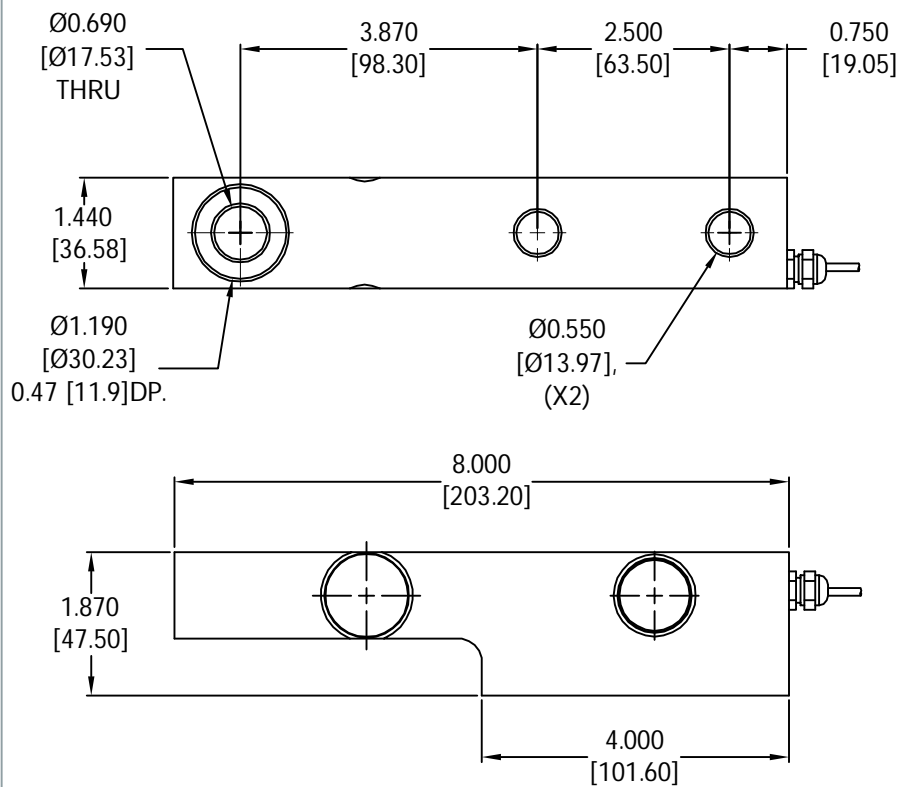
APPLICATIONS

- Platform scales, hopper and tank scales

OPTIONS

- mV/V/Ω Calibration to ±0.05% for applications with multiple load cells
- Plated steel version

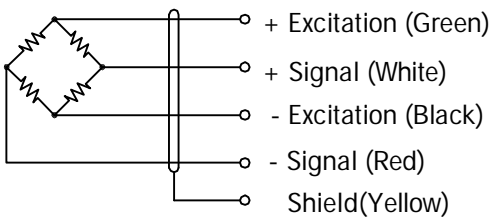
OUTLINE DIMENSIONS



shear beam
SB32
1020



WIRING



• Load cell is provided with 24AWG, 4-conductor foil shielded black cable

SPECIFICATIONS

Model	SB32		
Capacities	klb	1/ 2/ 5	
Full scale output(FS)	mV/V	2.0±1%	
Calibration in mV/V/Ω	%	See Options	
Non-linearity	%FS	≤±0.023	
Hysteresis	%FS	≤±0.023	
Non- repeatability	%FS	≤±0.023	
Creep@30min	%FS	≤±0.03	
Zero Balance	mV/V	±0.02	
Temperature effect			
	Output	%FS/10°C	≤±0.02
	Zero	%FS/10°C	≤±0.04
Temperature range			
	Compensated	°C	-10... +40
	Operating	°C	-20... +65
Terminal resistance			
	Input resistance	Ω	386±10
	Output resistance	Ω	350±5
Excitation voltage	VDC	10... 15	
Insulation resistance@50VDC	MΩ	≥2000	
Safe overload limit	%FS	150	
Ultimate load	%FS	300	
Cable length	ft	15	
Seal type	IP68		
Element material	Stainless steel		
Bolt torque	Nm	90	

PART NUMBERS

Capacity (klb)	Part #
1	1020-000-01
2	1020-001-02
5	1020-002-04

Dimensions and specifications subject to change without notice