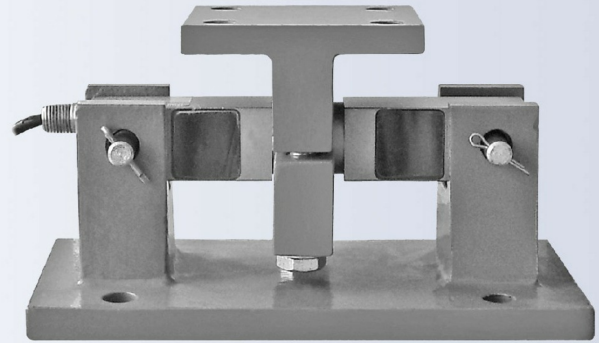


Self checking and easy to use design which can be bolted directly to tank leg, compensated for thermal expansion.



FEATURES

- Capacities 5000 to 75000lb.
- Alloy steel construction.

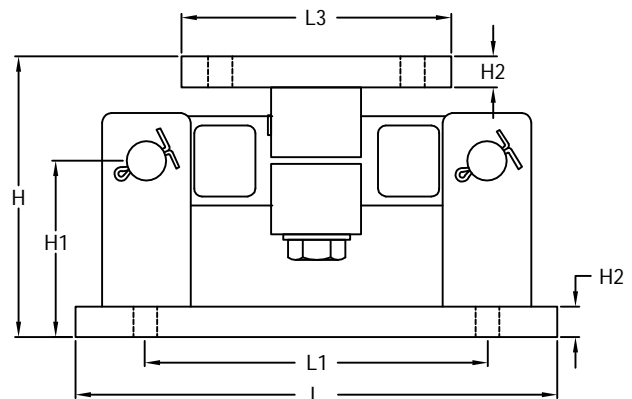
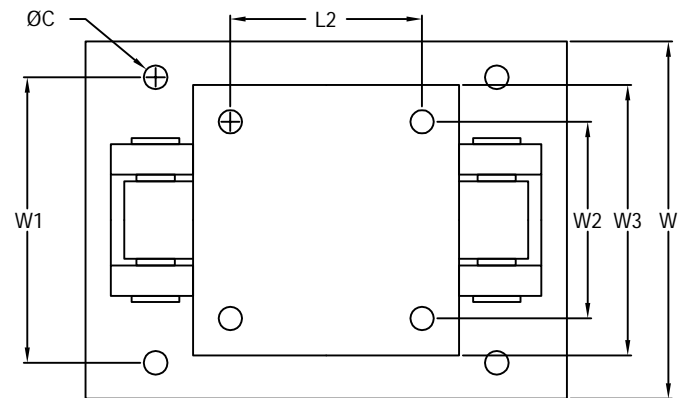
APPLICATIONS

- Tank and hopper weighing applications.

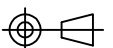
OPTIONS

- Stainless steel version.

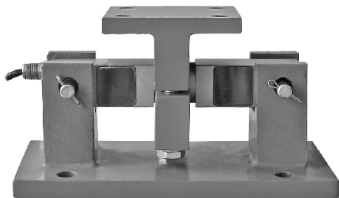
OUTLINE DIMENSIONS



Note : Weigh assembly only, load cell is not included.



weigh module
2000WM3



OUTLINE DIMENSIONS

Rated Capacity (lb)	C	H	H1	H2	L	L1	L2	L3	W	W1	W2	W3
1000-5000	0.56	5.08	2.95	0.50	9.25	6.25	2.75	4.00	5.00	3.75	2.75	4.00
10000-25000	0.81	7.94	4.84	0.75	12.00	7.50	6.00	8.00	8.00	6.00	6.00	8.00
35000	0.81	8.02	4.84	0.75	12.00	7.50	6.00	8.00	8.00	6.00	6.00	8.00
50000-75000	0.81	9.38	5.90	1.00	16.12	11.50	6.50	9.00	12.00	9.50	6.50	9.00

Metric conversion of above table (kg/mm)

Rated Capacity (kg)	C	H	H1	H2	L	L1	L2	L3	W	W1	W2	W3
453.6-2268	14.2	129.0	74.9	12.7	235.0	158.8	69.9	101.6	127.0	95.3	69.9	101.6
4535.9-11339.8	20.6	201.6	123.0	19.0	304.8	190.5	152.4	203.2	203.2	152.4	152.4	203.2
15875.7	20.6	203.8	123.0	19.0	304.8	190.5	152.4	203.2	203.2	152.4	152.4	203.2
22679.6-34019.4	20.6	238.2	149.9	25.4	409.4	292.0	165.1	228.6	304.8	241.3	165.1	228.6

Dimensions and specifications subject to change without notice