

The type 2012 is a stainless steel double ended shear beam, commonly used in general purpose weigh systems and truck scales.



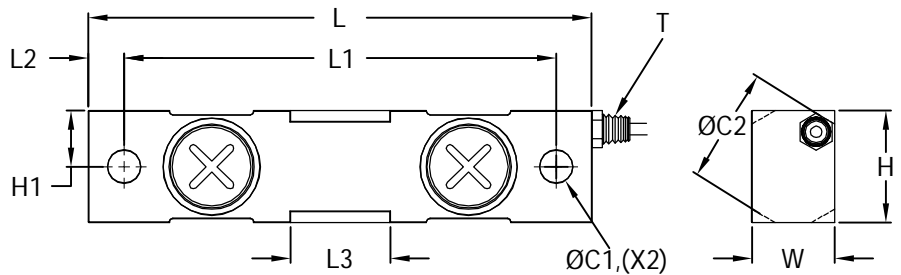
FEATURES

- Capacities from 2.5klb to 50klb.
- Stainless steel construction.
- Environmental protection IP68.

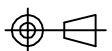
APPLICATIONS

- general purpose weigh systems and truck scales.

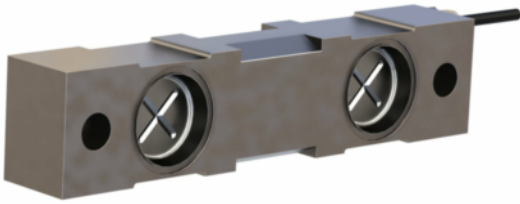
OUTLINE DIMENSIONS



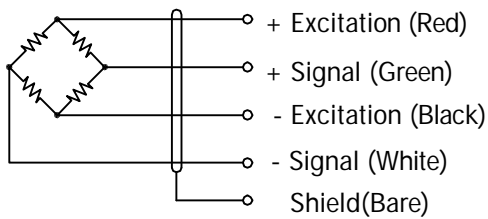
Capacity(klb)	C1	C2	H	H1	L	L1	L2	L3	W	T
2.5-5	0.50 [12.7]	1.26 [32.0]	1.26 [32.0]	0.67 [17.0]	7.50 [190.5]	6.25 [158.8]	0.62 [15.9]	1.22 [31.0]	1.26 [32.0]	1/4-18NPT
10-25	0.79 [20.0]	1.99 [50.5]	1.94 [49.2]	0.97 [24.6]	8.74 [222.0]	7.50 [190.5]	0.62 [15.8]	1.73 [44.0]	1.44 [36.5]	1/4-18NPT
35	0.79 [20.0]	2.50 [63.5]	2.50 [63.5]	1.25 [31.8]	8.74 [222.0]	7.50 [190.5]	0.62 [15.8]	1.73 [44.0]	1.50 [38.1]	1/4-18NPT
50	1.31 [33.3]	2.99 [76.0]	2.95 [75.0]	1.48 [37.5]	13.50 [343.0]	11.50 [292.0]	1.00 [25.5]	3.15 [80.0]	2.44 [62.0]	1/2-14NPT



double ended beams
DEB016AS
2012



WIRING



Cable : 4-Conductor cable.

SPECIFICATIONS

Model	2012	
Capacities	klb	2.5/ 5/ 10/ 15/ 25/ 35/ 50
Full scale output(FS)	mV/V	3.0±0.25%
Non-linearity	%FS	≤±0.05
Hysteresis	%FS	≤±0.03
Non- repeatability	%FS	≤±0.03
Creep@30min	%FS	≤±0.03
Zero Balance	mV/V	±0.06
Temperature range		
	Operating	°C -10... +40
Bridge resistance	Ω	700±10
Excitation voltage	VDC	10... 15
Insulation resistance@50VDC	MΩ	≥2000
Safe overload limit	%FS	150
Ultimate load	%FS	300
Cable length	ft	
Seal type	IP68	
Element material	Stainless steel	

Dimensions and specifications subject to change without notice



Pioneering Measured Solutions

Group Four Transducers

22 Deer Park Drive,
 E. Longmeadow, MA 01028
 www.groupfourtransducers.com

Phone : **(800) 419 1444**
 Fax : (413) 525 -6182
 sales@group-4.com