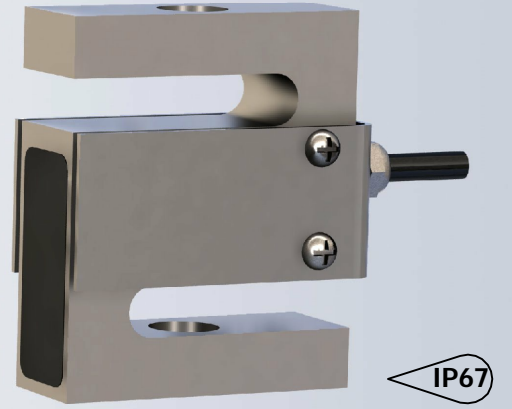


The type 3005 is a stainless steel load cell design for measuring tension or compression loads.



IP67

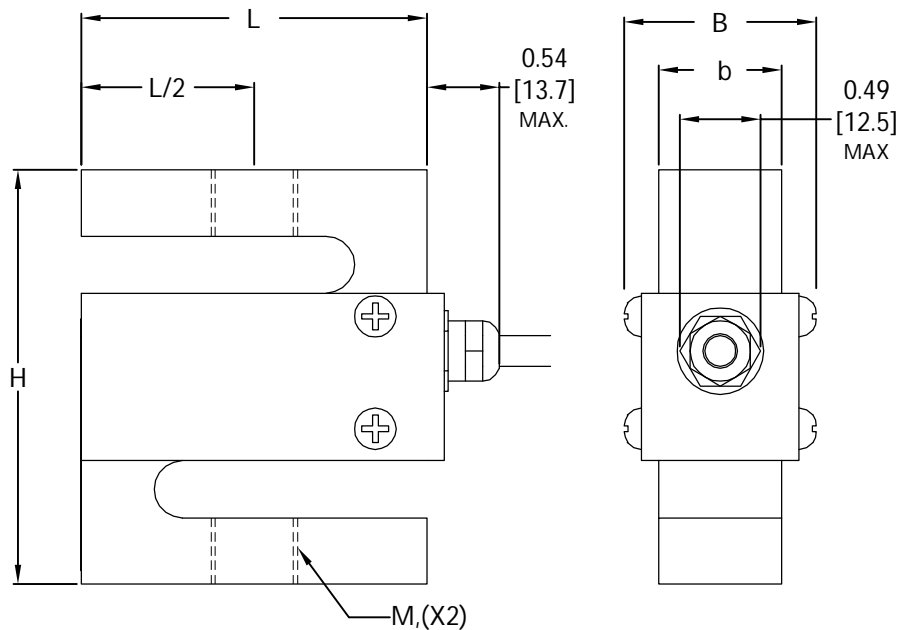
FEATURES

- Wide range of capacities from 100lb to 10klb.
- Stainless steel construction.
- Environmentally protected to IP67.

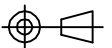
APPLICATIONS

- Crane scales and hanging scales, small hopper and tank weighing systems, hybrid systems with lever work, belt weighers and other load carriers with multiple load cells.

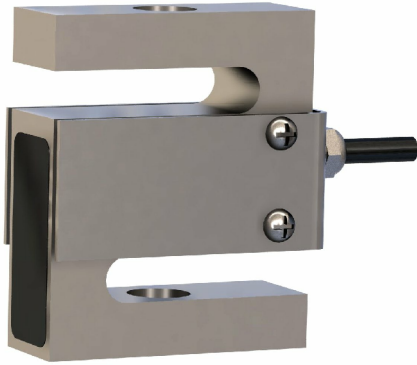
OUTLINE DIMENSIONS



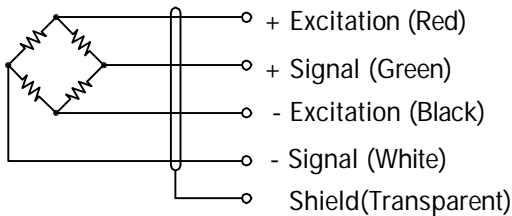
Capacity	L	H	b	B	M
100lb - 200lb	2.00[50.8]	2.40[60.96]	0.46[11.68]	0.86[21.8]	1/4-28UNF [M8X1.25]
500lb- 1klb	2.00[50.8]	2.40[60.96]	0.71[18.03]	1.11[28.2]	1/2-20UNF [M12X1.75]
2klb	2.00[50.8]	2.40[60.96]	0.96[24.38]	1.36[34.5]	1/2-20UNF [M12X1.75]
5klb	3.00[76.2]	3.90[99.06]	0.96[24.38]	1.36[34.5]	3/4-16UNF [M20X1.5]
10klb	3.00[76.2]	3.90[99.06]	0.96[24.38]	1.36[34.5]	3/4-16UNF [M20X1.5]



s-beam
GSM
3005



WIRING



Cable : 24 AWG, 4 Conductor foil shielded black cable.

SPECIFICATIONS

Model	3005		
Accuracy class	C3		
Capacities	lb	100/ 200/ 500	
	klb	1/ 2/ 5/ 10	
Full scale output(FS)	mV/V	3.0±0.008	
Combined error	%FS	≤±0.04	
Non-linearity	%FS	≤±0.03	
Non- repeatability	%FS	≤±0.01	
Creep@30min	%FS	≤±0.03	
Zero Balance	%FS	±1.0	
Temperature effect			
Output	%FS/10°C	≤±0.014	
	Zero	%FS/10°C	≤±0.017
Temperature range			
Compensated	°C	-10... +40	
	Operating	°C	-35... +65
Terminal resistance			
Input resistance	Ω	386±5	
	Output resistance	Ω	350±3
Excitation voltage	VDC	15(Max)	
Insulation resistance@50VDC	MΩ	≥5000	
Safe overload limit	%FS	150	
Ultimate load	%FS	300	
Cable length	ft	20	
Seal type	IP67		
Element material	Stainless steel		

Dimensions and specifications subject to change without notice