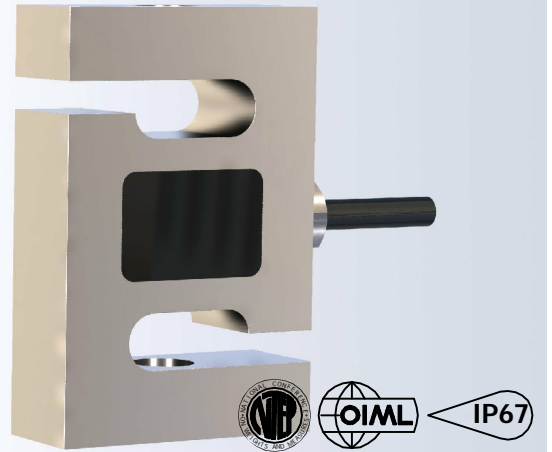


The GSC series s-beam load cell is ideal for measurement of both tension and compression forces. This load cell is most commonly found in bin and hopper weighing as well as test and measurement devices.



**FEATURES**

- Wide range of capacities from 100lb to 2.5klb.
- Plated steel construction.
- NTEP and OIML approved for use in legal-for-trade applications
- Environmentally protected to IP67.

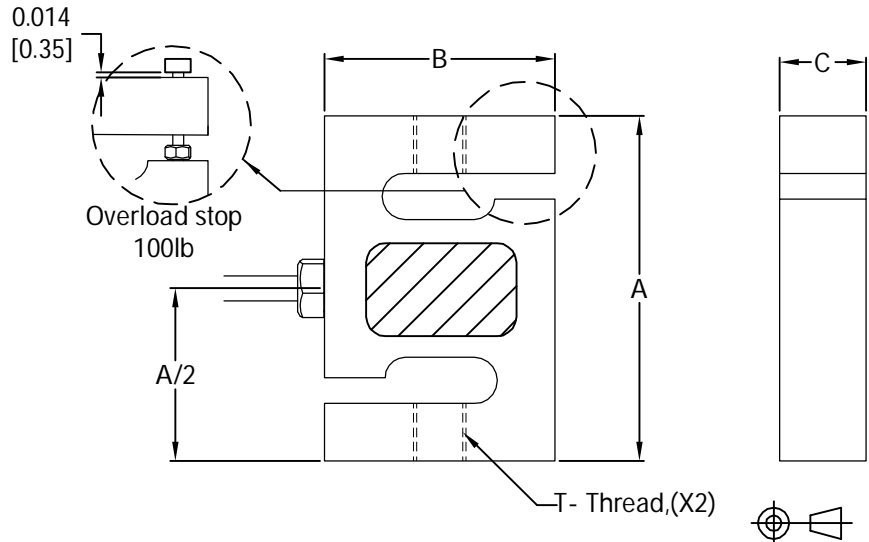
**APPLICATIONS**

- Crane Scales and Hanging Scales.
- Tank, Bin, and Hopper Weighing.
- Mechanical Scale Conversions to Digital Scales.
- Belt Scales.
- Test and Measurement Devices.

**OPTIONS**

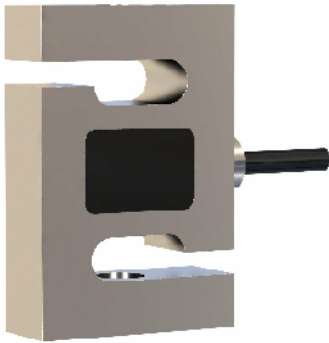
- mV/V/Ω calibration to ±0.05% for applications where multiple load cells are used.
- GSC-SS : Stainless steel construction.
- Optional built-in overload stop.
- Metric version is available.

**OUTLINE DIMENSIONS**

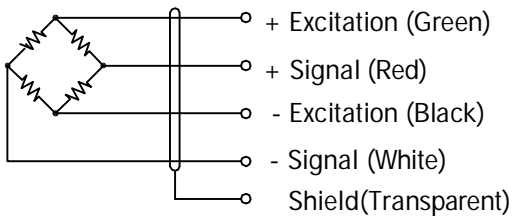


Capacity lb	A in[mm]	B in[mm]	C in[mm]	T-Thread	Overload Stop	NTEP Approval	OIML Approval
100	2.50 [63.5]	2.00 [50.8]	0.50 [12.7]	1/4-28 UNF	Yes	Pending	Pending
150	2.50 [63.5]	2.00 [50.8]	0.50 [12.7]	1/4-28 UNF	No	Pending	Pending
250	3.00 [76.2]	2.00 [50.8]	0.75 [19.1]	1/2-20 UNF	No	Available	Pending
500	3.00 [76.2]	2.00 [50.8]	0.94 [23.9]	1/2-20 UNF	No	Available	Available
1k	3.00 [76.2]	2.00 [50.8]	0.94 [23.9]	1/2-20 UNF	No	Available	Available
1.5k	3.00 [76.2]	2.00 [50.8]	0.94 [23.9]	1/2-20 UNF	No	Available	Available
2.5k	3.00 [76.2]	2.36 [59.9]	0.94 [23.9]	1/2-20 UNF	No	Available	Available

# s-beam GSC 3010



## WIRING



Cable : 22AWG, 4-conductor AL foil shielded cable with drain.

## SPECIFICATIONS

Model	3010		
Accuracy class	III		
Capacities	See table		
Full scale output(FS)	mV/V	3.0±1% Calibrated in tension	
Calibration in mV/V/Ω	%	See options	
Combined error	%FS	≤±0.02	
Non-linearity	%FS	≤±0.017	
Hysteresis	%FS	≤±0.017	
Non- repeatability	%FS	≤±0.01	
Creep@30min	%FS	≤±0.017	
Zero balance	%FS	≤±1	
Temperature effect			
	Output	%FS/10°C	≤±0.015
	Zero	%FS/10°C	≤±0.027
Temperature range			
	Compensated	°C	-10... +40
	Operating	°C	-10... +40
Terminal resistance			
	Input resistance	Ω	396±15
	Output resistance	Ω	350±5
Excitation voltage	VDC	10... 15	
Insulation resistance@50VDC	MΩ	≥5000	
Safe overload limit	%FS	150	
Ultimate load	%FS	300	
Safe side load	%FS	50	
Cable length	ft	20±0.1	
Seal type	Environmentally protected to IP67		
Element material	Plated steel		

## PART NUMBERS

Capacity(lb)	Part number
100	3010-000-00
150	3010-005-00
250	3010-001-00
500	3010-002-00
1k	3010-003-00
1.5k	3010-006-00
2.5k	3010-004-00

Dimensions and specifications subject to change without notice