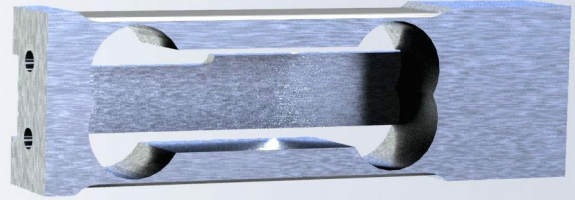


The 4001 family of load cells is comprised of light capacity sensors typically found in very small capacity filling machines and jewelers scales. The lowest capacity is 100 grams with an accuracy of 0.02 grams.



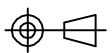
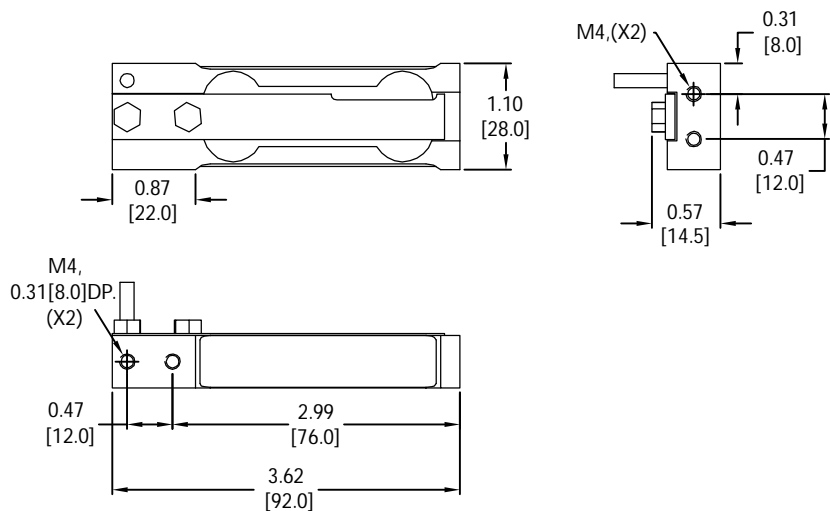
FEATURES

- Capacities 0.1kg - 5kg.
- Anodized aluminum construction.
- Environmental protection IP66.

APPLICATIONS

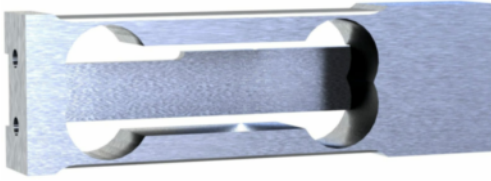
- Jewelers scale and small filling machines, laboratory testing, light capacity bench scales.

OUTLINE DIMENSIONS

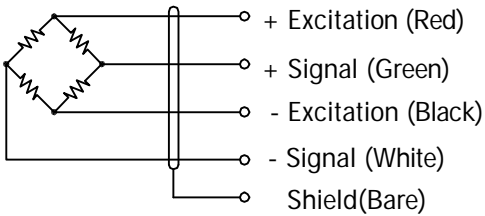


single point

SP1 4001



WIRING



Cable : Ø3.8 mm dia. 4 conductor cable.

SPECIFICATIONS

Model	4001	
Capacities	kg	0.1/ 0.2/ 0.3/ 0.5/1/2/ 3/ 5
Full scale output(FS)	mV/V	1.0±20%
Non-linearity	%FS	≤±0.023
Hysteresis	%FS	≤±0.023
Non- repeatability	%FS	≤±0.023
Creep@30min	%FS	≤±0.05
Zero Balance	mV/V	±0.05
Nominal temperature range	°C	-10... +40
Bridge resistance	Ω	415±15
Excitation voltage	VDC	10... 15
Insulation resistance@50VDC	GΩ	≥1
Safe overload limit	%FS	150
Ultimate load	%FS	300
Cable length	m	0.5
Seal type	IP66	
Element material	Aluminum	
Bolt torque	Nm	2.5

Dimensions and specifications subject to change without notice