

The substantial size, stainless steel construction, and protective cover were specifically designed for harsh, abusive environments. The location of the mounting holes allows for scale frame mounting that provides additional side load protection.



FEATURES

- Capacities 125lb, 250lb.
- Environmental Protection IP67.

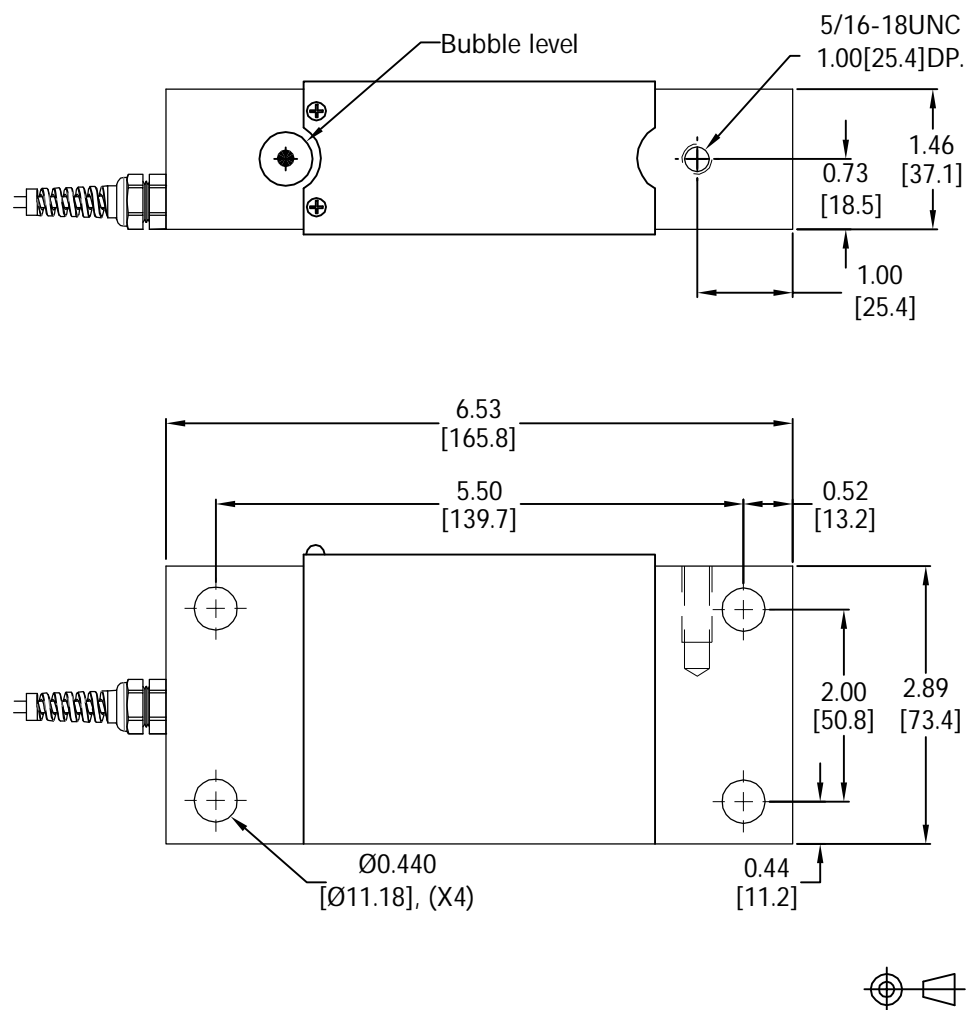
APPLICATIONS

- Bench scales, Food processing systems.

OPTIONS

- mV/V/ Ω Calibration matching.

OUTLINE DIMENSIONS

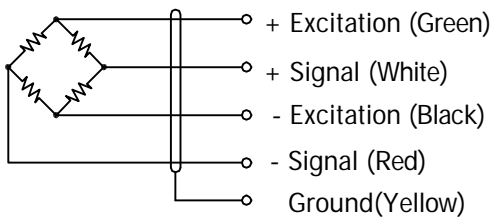


single point

FLS 4041



WIRING



Cable : 22 AWG, 4-Conductor cable with ground wire.

SPECIFICATIONS

Model	4041	
Capacities	lb	125/ 250
Full scale output(FS)	mV/V	0.998~1.002
Calibration in mV/V/ Ω	%	See options
Combined error	%FS	$\leq \pm 0.05$
Non-linearity	%FS	$\leq \pm 0.02$
Hysteresis	%FS	$\leq \pm 0.03$
Non- repeatability	%FS	$\leq \pm 0.03$
Creep@30min	%FS	$\leq \pm 0.03$
Zero Balance	%FS	$\leq \pm 2$
Temperature range		
	Operating	$^{\circ}\text{C}$ -20... +60
Terminal resistance		
	Input resistance	Ω 450 \pm 100
	Output resistance	Ω 350 \pm 5
Excitation voltage	VDC	10... 15
Insulation resistance@50VDC	M Ω	≥ 3000
Safe overload limit	%FS	150
Cable length	ft	10
Seal type	IP67	
Element material	Stainless steel	

Dimensions and specifications subject to change without notice