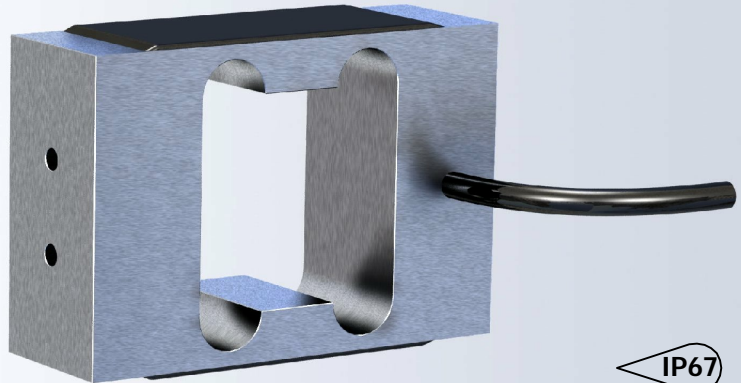


The type NLC is an aluminum single point load cell ideal for use in packaging machines.



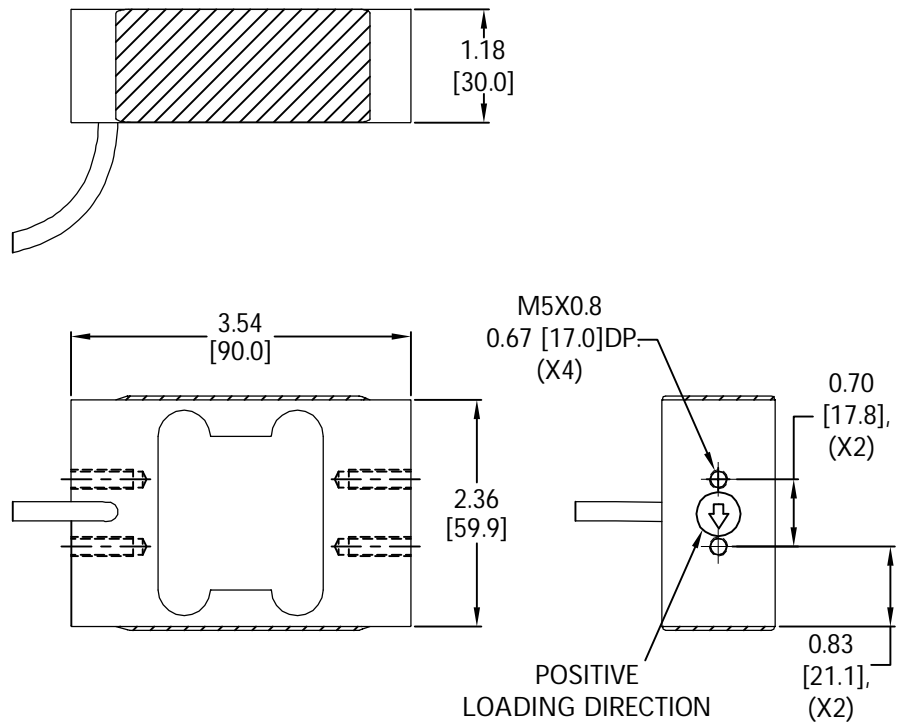
FEATURES

- Capacities 24 kg.
- Aluminum construction.
- Environmental Protection IP67.

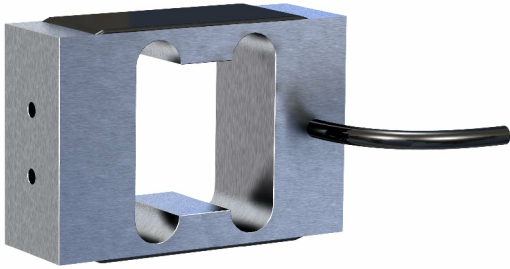
APPLICATIONS

- Packaging machines.

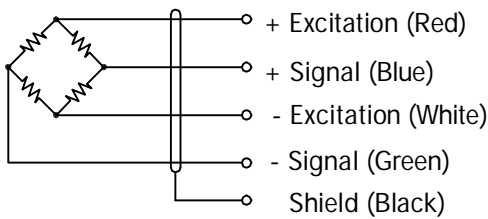
OUTLINE DIMENSIONS



single point NLC 4044



WIRING



Cable : 24 AWG, 4 Conductor shielded cable.

SPECIFICATIONS

Model	4044		
Accuracy class	C3		
Capacities	kg	24	
Full scale output (FS)	mV/V	1.70±0.02	
Non-linearity	%FS	≤±0.017	
Hysteresis	%FS	≤±0.017	
Creep @ 30min	%FS	≤±0.017	
Zero balance	%FS	≤±2	
Temperature effect			
	Output	%FS/10°C	≤±0.01
	Zero	%FS/10°C	≤±0.014
Temperature range			
	Compensated	°C	-10... +40
	Operating	°C	-40... +80
Terminal resistance			
	Input resistance	Ω	385±5
	Output resistance	Ω	350±5
Excitation voltage	V DC	5... 15	
Insulation resistance @ 50V DC	MΩ	≥3000	
Safe overload limit	%FS	150	
Ultimate load	%FS	300	
Cable length	in	6.5	
Weight	lb	0.35	
Seal type	IP67		
Element material	Aluminum		

PART NUMBERS

Capacity (kg)	Part #
24	4044-001-02

Dimensions and specifications subject to change without notice