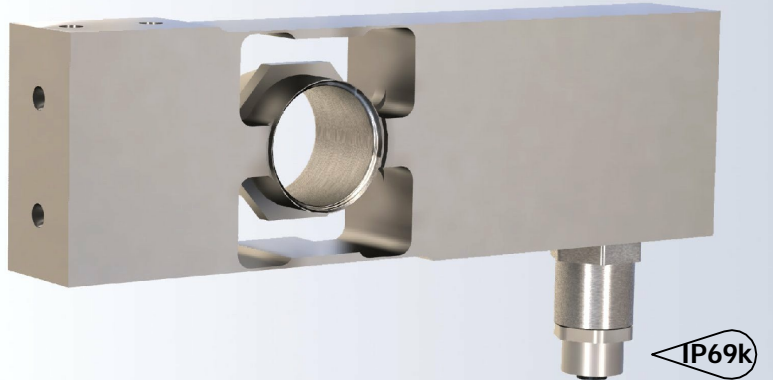


Digital single point load cell designed for high speed filling and check weighing applications. The stainless steel load cell is hermetically sealed and is ideal for use in heavy washdown applications



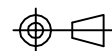
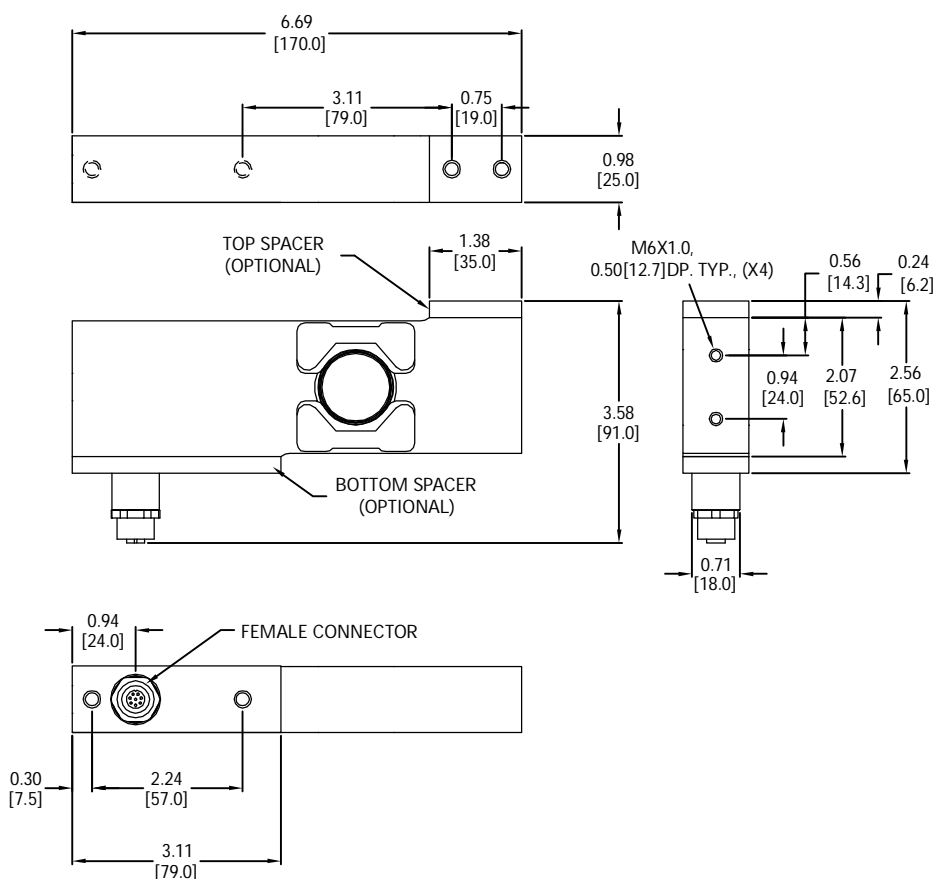
**FEATURES**

- Capacities from 10 to 100 kg.
- Stainless steel construction.
- Environmental Protection IP69k with complete hermetic sealing.
- AD conversion rate up to 1200upd./sec.
- Free professional software for setting up the digital load cell.
- Maximum platform size up to 450 x 450 mm.

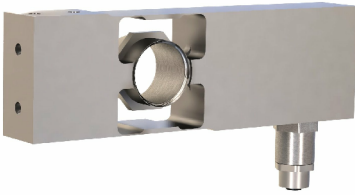
**APPLICATIONS**

- Bench scales, conveyor scales, check weighers, filling plants, packaging machines and industrial process control.

**OUTLINE DIMENSIONS**



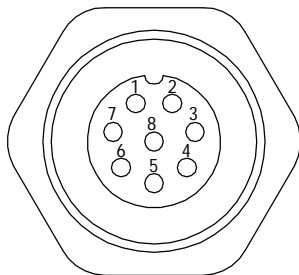
# single point SPF5 4086D



## WIRING

Female Connector Signal Electronics M12AF0008		
Pin No.	RS-232+CAN	RS-485+RS-422
1	GND1	GND1
2	PROGRAM	PROGRAM
3	CANH	Rx+
4	TRIGGER INPUT	TRIGGER INPUT
5	CANL	Rx-
6	RxD	Tx-
7	TxD	Tx+
8	PWR+	PWR+

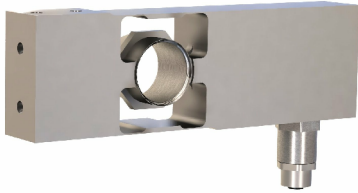
## PIN Configuration



## SPECIFICATIONS

Model	SPF5				
Capacities (E <sub>max</sub> )	kg	10	20	50	100
Recommended min. external division	g	1	2	5	10
<b>PERFORMANCES</b>					
Accuracy class according to the OIML R60	C3				
Maximum load cell verification interval(V <sub>min</sub> )	E <sub>max</sub> /10000				
Combined error	%FS	≤±0.017			
Creep @ 30min	%FS	≤±0.017			
Zero balance, raw counts	increment	±2000			
Output resolution at full load, raw counts	increment	256000	512000	512000	512000
Internal AD conversion rate	upd./sec	1200			
Fix, digital low pass IIR filter, default	Hz	18 (Supress 50Hz and 60Hz influence)			
Adjustable , digital low pass IIR filter	Hz	18-0.25; Selectable in 8 steps			
Adjustable , digital low pass FIR filter	Hz	40-5; Selectable in 8 steps			
Adjustable, external output update rate	upd./sec	1200-9; Selectable in 8 steps			
<b>GENERAL I/O's</b>					
Hardware interface, CAN version	CAN and RS232				
Hardware interface, RS version	RS485 and RS422 (Both four wire)				
Data transmission rates CAN	kb	125;250;500;1000			
Data transm. rates RS485/RS422/RS232		9.6;19.2;38.4;57.6;115.2;230.4;460.8			
Protocol CAN	CAN Open				
Protocol RS485/ RS422/ RS232	ASCII or Modbus RTU				
Logical input, programmable	Trigger Level 2-30Vdc,<3mA,Ref to Gnd.				
Power supply	VDC	10-30 ≤ 0.4 Watt			
Connections	Standard 8 pin, female M12AF 0008				
<b>INFLUENCES</b>					
Safe load limit	%* E <sub>max</sub>	300	150	150	150
Ultimate load	%* E <sub>max</sub>	600	300	300	300
Eccentric loading error acc. to OIML R76	%FS	±0.0233			
Max platform size	mm x mm	450 x 450			
Temperature effect on zero	%FS/°C	0.001			
Temperature effect on span	%FS/°C	0.001			
Temperature range	°C	Operating: -10/+40 Storage: -40/+70			
EMC performance	MID Class E2 (Industrial locations)				
I/O protection, all pins	Reversed polarity; Excess voltage and surge				
Insulation body/ Electronics @ 500VDC	GΩ	≥1			
Vibration	2.5G operational; 5G non-operational				
Environmental Protection	Body IP69k; Connectors IP68				
Corrosion resistance	All stainless steel (Electro polished)				

single point  
**SPF5**  
**4086D**



**PART NUMBERS**

Capacity (kg)	Option	Part No.
10	Single IO (RS232+CAN)	4086D-000-00
20		4086D-001-00
50		4086D-002-00
100		4086D-003-00
10	Single IO (RS485+RS422)	4086D-000-01
20		4086D-001-01
50		4086D-002-01
100		4086D-003-01
10	Single IO (RS232+CAN) with Optional spacer	4086D-000-04
20		4086D-001-04
50		4086D-002-04
100		4086D-003-04
10	Single IO (RS485+RS422) with Optional spacer	4086D-000-05
20		4086D-001-05
50		4086D-002-05
100		4086D-003-05

Dimensions and specifications subject to change without notice



**Pioneering Measured Solutions**

**Group Four Transducers**  
 22 Deer Park Drive,  
 E. Longmeadow, MA 01028  
[www.groupfourtransducers.com](http://www.groupfourtransducers.com)

Phone : **(800) 419 1444**  
 Fax : (413) 525 -6182  
[sales@group-4.com](mailto:sales@group-4.com)