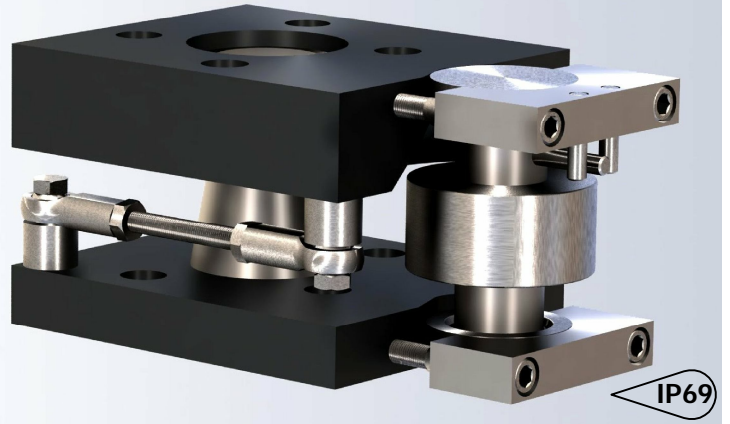


The type RC-WM is a self aligning weigh module with superior load introduction.

The weigh module will be shipped completely pre-assembled, ready for installation by welding or bolting.



FEATURES

- Capacities from 5-50 ton
- Self aligning
- Totally hermetically sealed load cell
- Integral checking
- Up lift protected

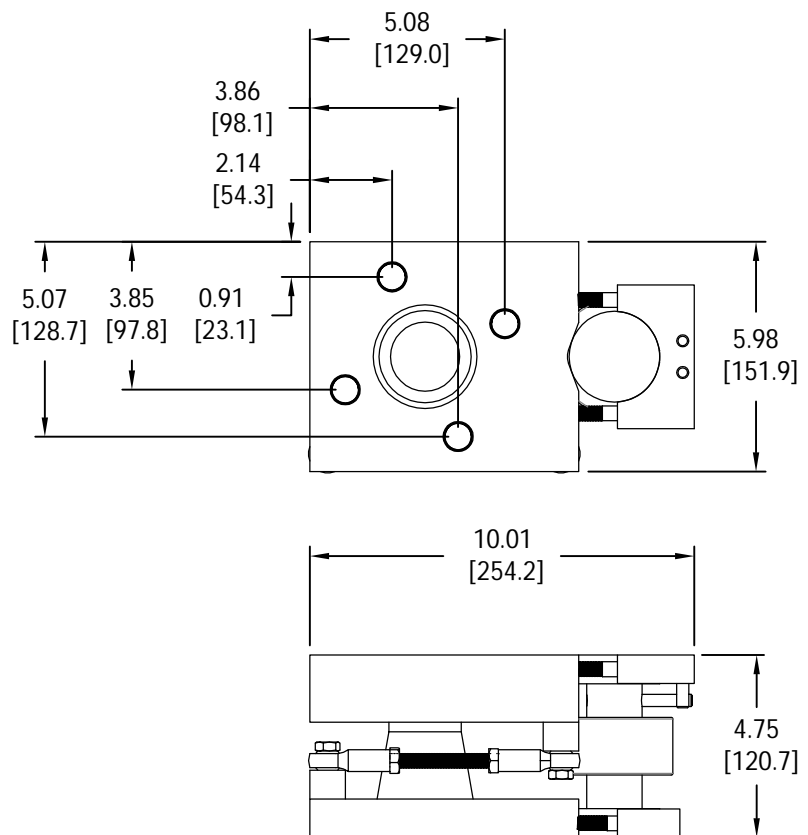
APPLICATIONS

- Tank, bin and hopper weighing, silo weighing

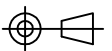
OPTIONS

- Stainless steel assembly
- Top and Bottom mounting plate

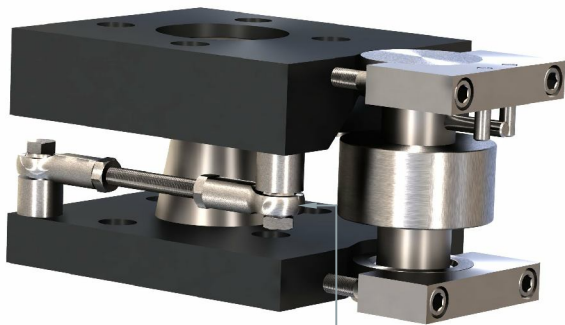
OUTLINE DIMENSIONS



Recommended mounting bolts:
Grade 8 - 3/4-10 or Grade 10.9-20 mm x 2.5 mm

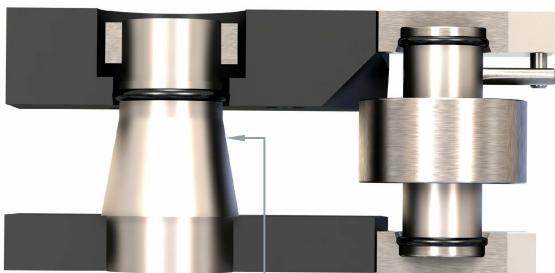


weigh module
RC-WM
5000WM3



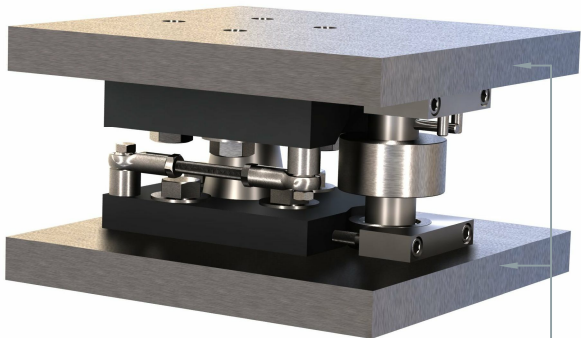
Integral check link

Section view



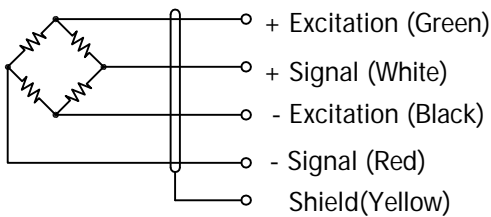
Integral uplift and side load stop

Optional mounting plates



Mounting plates

WIRING



Cable: 20 AWG, 4-conductor with shield

SPECIFICATIONS

| | | | |
|-------------------------------|-------------------|-----------------------|------------|
| Model | RC-WM | | |
| Accuracy class | C3 | | |
| Capacities | ton | 5/ 10/ 20/ 30/ 40/ 50 | |
| Full scale output(FS) | mV/V | 2.0±1% | |
| Calibration in mV/V/Ω | % | ≤±0.05 | |
| Non-linearity | %FS | ≤±0.02 | |
| Hysteresis | %FS | ≤±0.02 | |
| Creep@30min | %FS | ≤±0.02 | |
| Zero Balance | %FS | ≤±5 | |
| Temperature effect | | | |
| | Output | %FS/10°C | ≤±0.01 |
| | Zero | %FS/10°C | ≤±0.0187 |
| Temperature range | | | |
| | Compensated | °C | -10... +40 |
| | Operating | °C | -10... +65 |
| Terminal resistance | | | |
| | Input resistance | Ω | 386±50 |
| | Output resistance | Ω | 350±5 |
| Excitation voltage | VDC | 5... 15 | |
| Insulation resistance@50VDC | MΩ | ≥5000 | |
| Load cell ultimate load limit | %FS | 200 | |
| Weigh pod ultimate load limit | %FS | 300 | |
| Maximum uplift force | klb | 80 | |
| Maximum side force | klb | 40 | |
| Cable length | ft | 30 | |
| Seal type | IP69 | | |
| Load cell material | Stainless steel | | |
| Assembly material | Plated steel | | |
| Load mount weight | lb | 35 | |

PART NUMBERS

| Capacity(ton) | Part # |
|---------------|----------------|
| 5 | 5000WM3-000-00 |
| 10 | 5000WM3-001-00 |
| 20 | 5000WM3-002-00 |
| 30 | 5000WM3-003-00 |
| 40 | 5000WM3-004-00 |
| 50 | 5000WM3-005-00 |

Dimensions and specifications subject to change without notice



Pioneering Measured Solutions

Group Four Transducers
 22 Deer Park Drive,
 E. Longmeadow, MA 01028
 www.groupfourtransducers.com

Phone : (800) 419 1444
 Fax : (413) 525 -6182
 sales@group-4.com