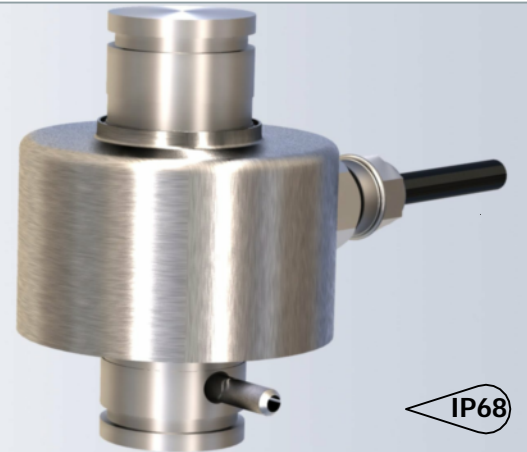


The type RC is a stainless steel self centering rocker column load cell with complete hermetic sealing. It is a perfect fit for use in harsh industrial environments.



**FEATURES**

- Wide range of capacities from 5 t to 50 t.
- Stainless steel construction.
- Environmental Protection IP68 with complete hermetic sealing.
- Self restoring design.
- High input resistance.

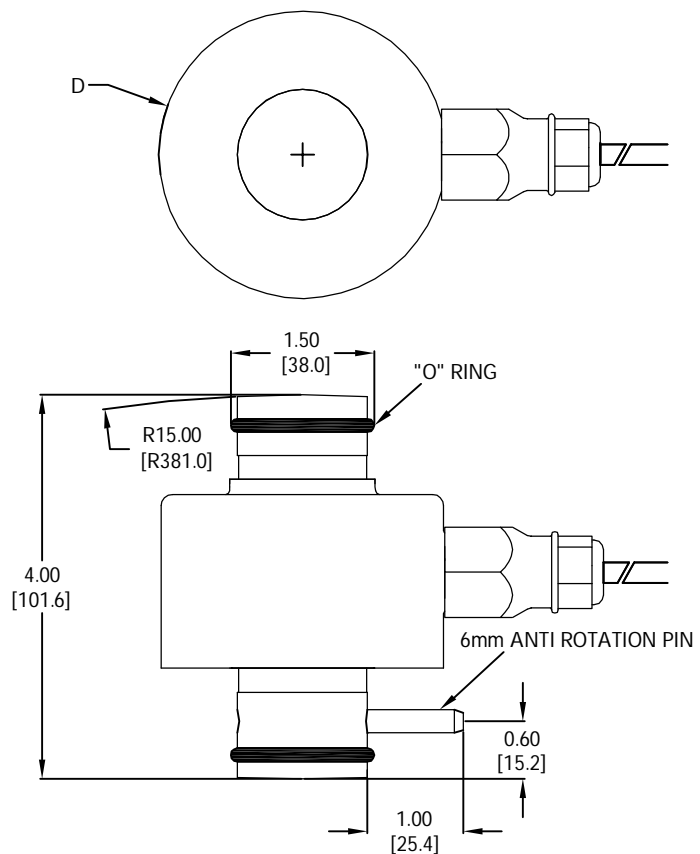
**APPLICATIONS**

- Weighbridges, hoppers, tanks and silos.

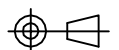
**OPTIONS**

- 4.00[101.6] and 5.50[139.7] height optional versions are available for 15, 20, 30, 40 t capacities.
- 1000Ω Bridge resistance version.

**OUTLINE DIMENSIONS**

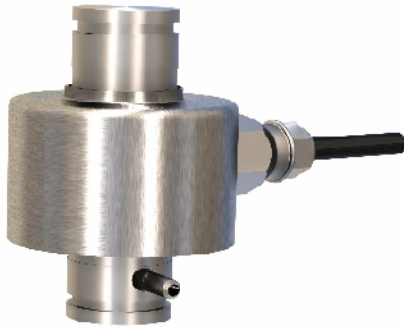


Capacity (t)	D inch (mm)
5/ 10	2.0 (50.8)
20/ 30/ 40/ 50	2.99(76.0)

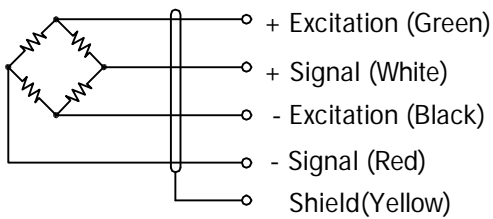


rocker column

# RC



### WIRING



Cable : 20AWG, 4 Conductor cable with shield.

### SPECIFICATIONS

Model	RC		
Accuracy class	C3		
Capacities	t	5/ 10/ 20/ 30/ 40/ 50	
Full scale output(FS)	mV/V	2.0±0.1%	
Calibration in mV/V/Ω	%	≤±0.05	
Non-linearity	%FS	≤±0.05	
Hysteresis	%FS	≤±0.05	
Creep@30min	%FS	≤±0.02	
Zero Balance	%FS	≤±5	
Temperature effect			
	Output	%FS/10°C	≤±0.01
	Zero	%FS/10°C	≤±0.0187
Temperature range			
	Compensated	°C	-10... +40
	Operating	°C	-10... +65
Terminal resistance			
	Input resistance	Ω	386±50
	Output resistance	Ω	350±2
Excitation voltage	VDC	5... 15	
Insulation resistance@50VDC	MΩ	≥5000	
Safe overload limit	%FS	200	
Ultimate load	%FS	300	
Cable length	ft	20	
Seal type	IP68		
Element material	Stainless steel		

### PART NUMBERS

Capacity(t)	Part#
5	5030-000-00
10	5030-001-00
20	5030-002-00
30	5030-003-00
40	5030-004-00
50	5030-005-00

Dimensions and specifications subject to change without notice