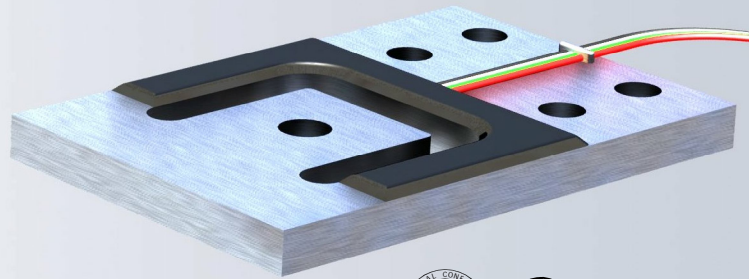


The type GPB is a very low profile load cell. Its unique design allows for great flexibility in scale design.



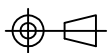
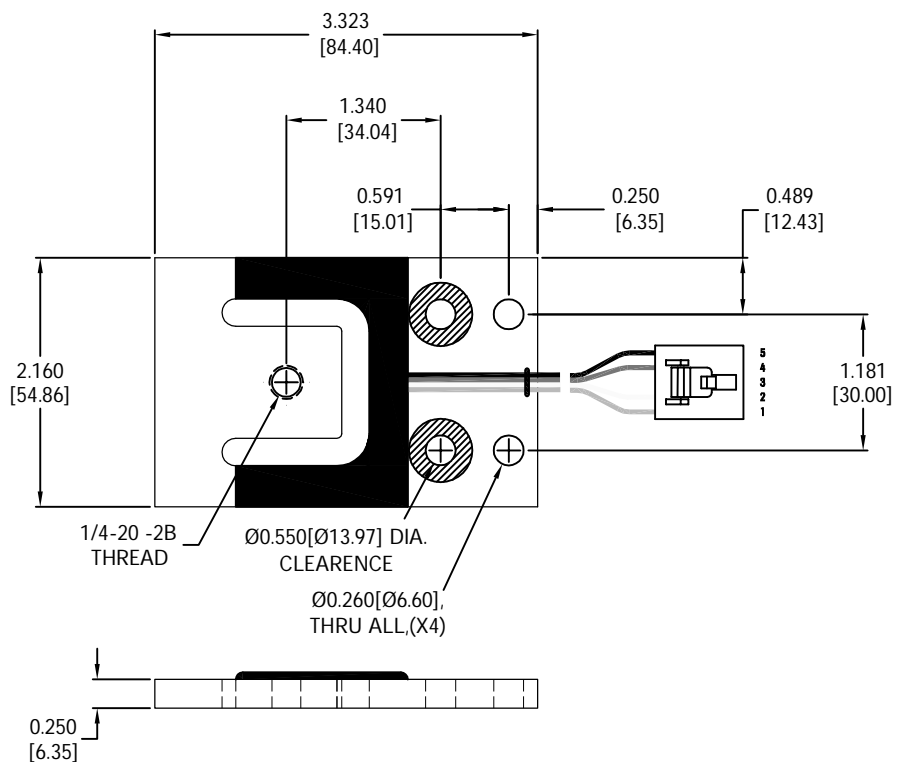
FEATURES

- Capacity from 75kg to 375kg.
- Aluminium construction.
- Environmental Protection IP65.
- Very low profile design.
- High input resistance.
- Calibration in mV/V/ Ω for accuracy class C3.
- OIML and NTEP approved.

APPLICATIONS

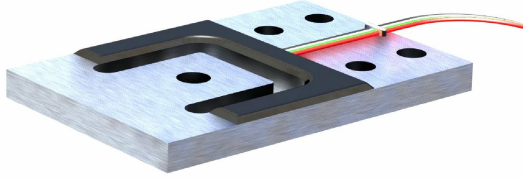
- Compact scales, bench and floor scales, retail and counting scales, special applications in medical and other areas.

OUTLINE DIMENSIONS

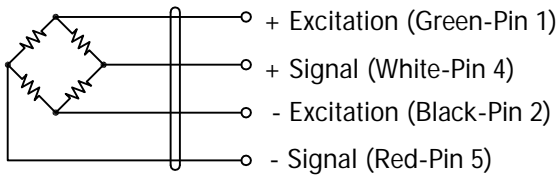


planar beam

GPB 6001



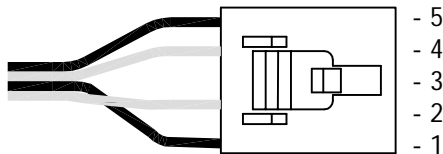
WIRING



CABLE : 26AWG 26 AWG COLOR CODED
AMPHENOL RIBBON CABLE

CONNECTOR : 5CKT IDC CONN 22-26AWG POLAR
LATCHING GOLD AMP#103957-4

PIN CONFIGURATION :



SPECIFICATIONS

Model	6001	
Capacities	kg	75/ 150/ 375
Full scale output(FS)	mV/V	0.9±0.1%
Minimum dead load	kg	0
Calibration in mV/V/Ω	%	±0.05
Maximum number of loadcell varification intervals (n _{max})		3000
Combined error	%FS	≤±0.02
Creep@30min	%FS	≤±0.0166
Zero Balance	%FS	≤±5
Temperature effect		
Output	%FS/10°C	≤±0.01
Zero	%FS/10°C	≤±0.0187
Temperature range		
Compensated	°C	-10... +40
Operating	°C	-10... +65
Terminal resistance		
Input resistance	Ω	1165±5
Output resistance	Ω	1000±3
Excitation voltage	VDC	5... 15
Insulation resistance@50VDC	MΩ	≥5000
Safe overload limit	%FS	300
Ultimate load	%FS	400
Safe side load	%FS	200
Cable length	m	1.5
Seal type	IP65	
Element material	Aluminum	

Dimensions and specifications subject to change without notice