

**Digital Stainless Steel Single point load cell. For use in Conveyor weighing systems, Tank Bin and hopper Weigh Systems, Bench Scales and Floor Scales. Protection class IP69, Ideal for use in heavy wash down areas.**



**FEATURES**

- Capacities 20, 100, 200 and 500kg.
- Stainless steel construction.
- Environmental protection IP69.
- AD conversion rate up to 1200upd./sec.

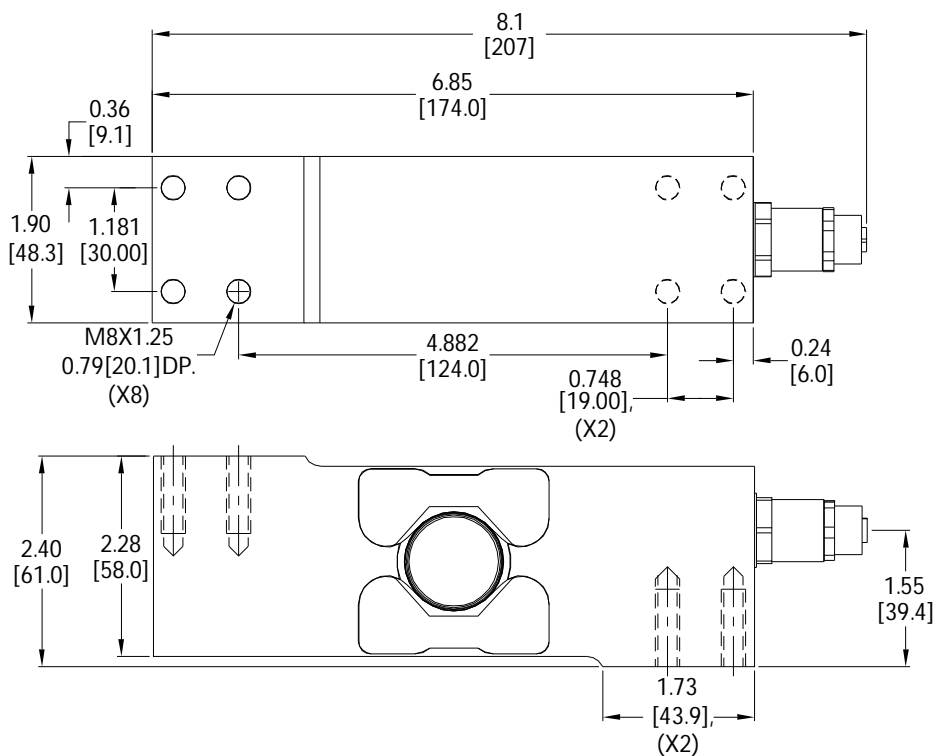
**APPLICATIONS**

- Bench scales, floor scales, Conveyor weighing systems, Tank Bin and hopper Weigh Systems.

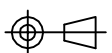
**OPTIONS**

- Load cells can be supplied with calibration certificates as per ASTM E74.

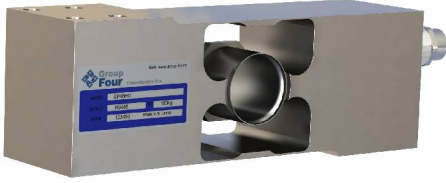
**OUTLINE DIMENSIONS**



NOTE: M12, 8PIN MALE CONNECTOR TO OPEN ENDED, 6 FEET LONG MATING CABLE PROVIDED WITH THE LOAD CELL.



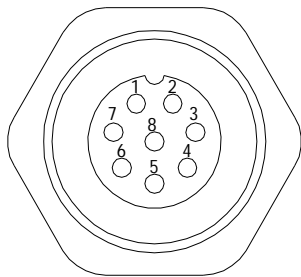
# digital single point SP46HD 4075D



## WIRING

Female Connector Signal Electronics M12AF0008		
Pin No.	RS-232+CAN	RS-485+RS-422
1	GND1	GND1
2	PROGRAM	PROGRAM
3	CANH	Rx+
4	TRIGGER INPUT	TRIGGER INPUT
5	CANL	Rx-
6	RxD	Tx-
7	TxD	Tx+
8	PWR+	PWR+

## PIN CONFIGURATION



## PART NUMBERS

Capacity(kg)	Option	Part No.
20	RS232 + CAN	4075D-000-00
100	RS232 + CAN	4075D-001-00
200	RS232 + CAN	4075D-002-00
500	RS232 + CAN	4075D-003-00

Capacity(kg)	Option	Part No.
20	RS485+RS422	4075D-000-01
100	RS485+RS422	4075D-001-01
200	RS485+RS422	4075D-002-01
500	RS485+RS422	4075D-003-01

## SPECIFICATIONS

Model	SP46HD				
Capacities (E <sub>max</sub> )	kg	20	100	200	500
<b>PERFORMANCES</b>					
Non linearity	%FS	≤±0.03			
Hysteresis	%FS	≤±0.03			
Combined Error	%FS	≤±0.03			
Creep @ 30min	%FS	≤±0.025			
Zero Balance, raw counts	increments	±2000			
Output resolution at full load, raw counts	increments	512000			
Internal AD conversion rate	upd./sec	1200			
Fix, Digital Low Pass IIR Filter, Default	Hz	18 (Supress 50Hz and 60Hz Influence)			
Adjustable , Digital Low Pass IIR Filter Adjustable , Digital Low Pass FIR Filter	Hz	18-0.25; Selectable in 8 Steps 40-5; Selectable in 8 Steps			
Adjustable, External Output Update Rate	upd./sec	1200-9; Selectable in 8 Steps			
<b>GENERAL I/O's</b>					
Hardware Interface, CAN Version Hardware Interface, RS Version	CAN and RS232 RS485 and RS422 (Both Four Wire)				
Data transmission rates CAN Data transm. rates RS485/RS422/RS232	kb	125;250;500;1000 9.6;19.2;38.4;57.6;115.2;230.4;460.8			
Protocol CAN Protocol RS485/ RS422/ RS232	CAN Open ASCII or Modbus RTU				
Logical Input, Programmable	Trigger Level 2-30Vdc, <3mA, Ref to Gnd.				
Power supply	VDC	10-30 ≤ 0.4 Watt			
Connections	Standard 8 pin, female M12AF0008				
<b>INFLUENCES</b>					
Safe Load Limit	%* E <sub>max</sub>	150			
Ultimate Load	%* E <sub>max</sub>	200			
Temperature Effect on Zero	%FS/10°C	0.02			
Temperature Effect on Span	%FS/10°C	0.02			
Temperature Range	°C	Operating: -10/+40 Storage: -20/+65			
EMC performance	MID Class E2 (Industrial Locations)				
I/O Protection, All Pins	Reversed Polarity; Excess Voltage and Surge				
Isolation Body/ Electronics at 500VDC	GΩ	≥1			
Vibration	2.5G Operational; 5G Non-Operational				
Environmental Protection	Body IP69k; Connectors IP68				
Corrosion Resistance	Stainless steel				

Dimensions and specifications subject to change without notice



**Pioneering Measured Solutions**

**Group Four Transducers**

22 Deer Park Drive,  
E. Longmeadow, MA 01028  
www.groupfourtransducers.com

Phone : (800) 419 1444  
Fax : (413) 525 -6182  
sales@group-4.com