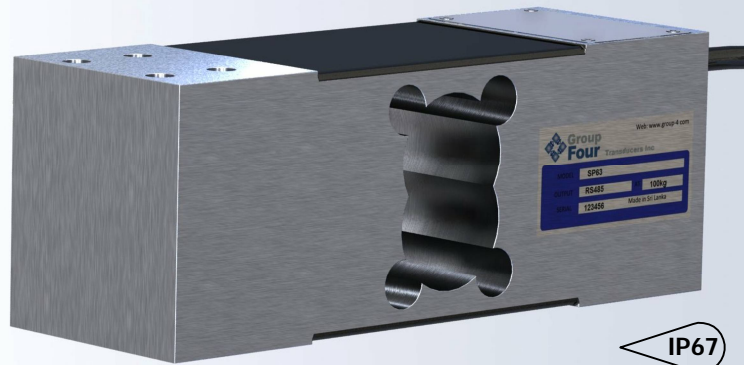


**Digital Aluminum Single point load cell. For use in Conveyor weighing systems, Tank Bin and hopper Weigh Systems, Bench Scales and Floor Scales. Protection class IP67.**



**FEATURES**

- Capacity 100kg.
- High grade aluminum construction.
- Environmental protection IP67.
- AD conversion rate up to 1200upd./sec.

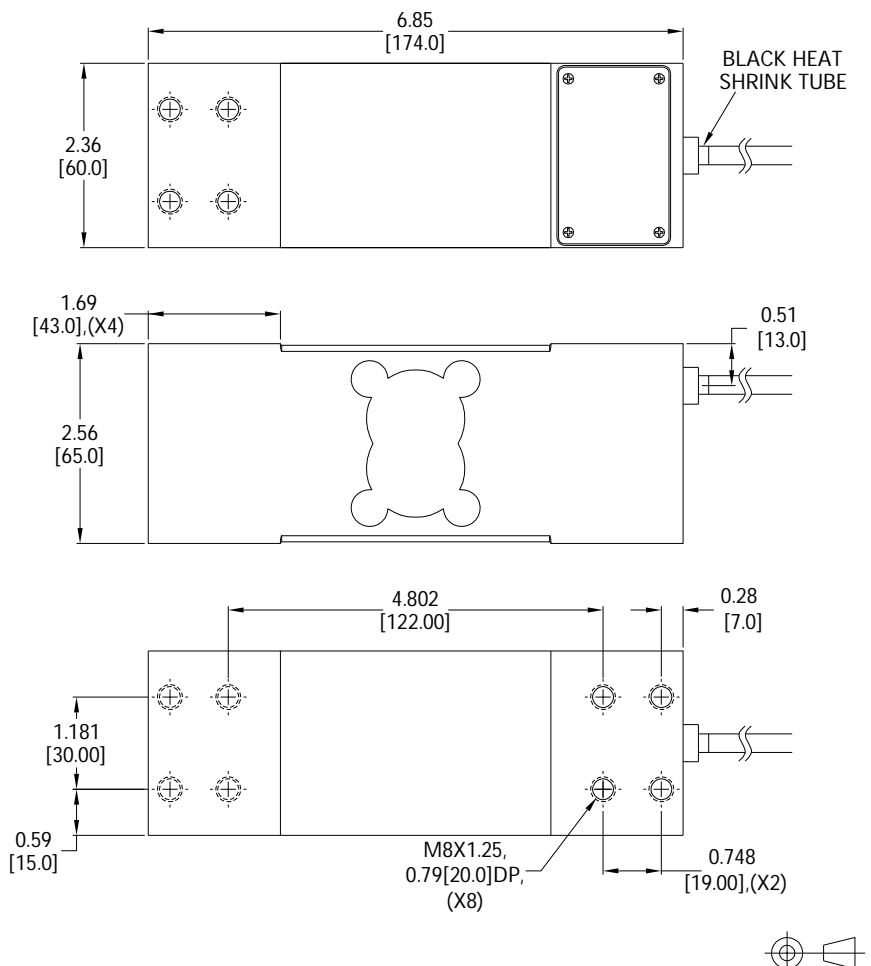
**APPLICATIONS**

- Conveyor weighing systems, Tank Bin and hopper Weigh Systems, Bench Scales and Floor Scales.

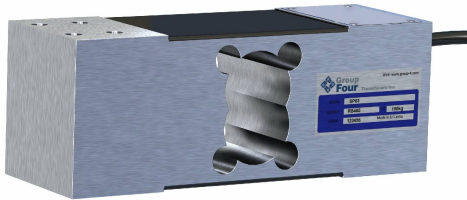
**OPTIONS**

- Load cells can be supplied with calibration certificates as per ASTM E74.

**OUTLINE DIMENSIONS**



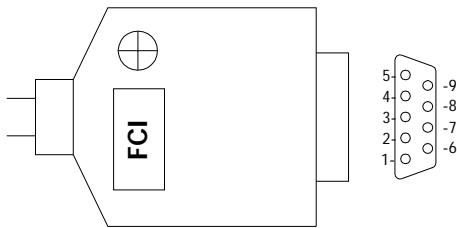
# digital single point SP63 4053D



## WIRING

Pin No.	Connection	Cable Color
2	TxD	Green
3	RxD	White
4	GND1	Black
8	PWR+	Red

## PIN CONFIGURATION OF DB9 MALE CONNECTOR



Note: Shield is connected to DB9 connector body.

## SPECIFICATIONS

Model	SP63	
Capacities (E <sub>max</sub> )	kg	100
<b>PERFORMANCES</b>		
Accuracy class according to OIML R60		C3
Combined Error	%FS	±0.017
Creep @ 30min	%FS	±0.017
Zero Balance, raw counts	increments	±2000
Output resolution at full load, raw counts	increments	512000
Internal AD conversion rate	upd./sec	1200
Fix, Digital Low Pass IIR Filter, Default	Hz	18 (Supress 50Hz and 60Hz Influence)
Adjustable , Digital Low Pass IIR Filter	Hz	18-0.25; Selectable in 8 Steps
Adjustable , Digital Low Pass FIR Filter	Hz	40-5; Selectable in 8 Steps
Adjustable, External Output Update Rate	upd./sec	1200-9; Selectable in 8 Steps
<b>GENERAL I/O's</b>		
Hardware Interface, RS Version	RS232	
Data transm. rates RS232	kb	9.6;19.2;38.4;57.6;115.2;230.4;460.8
Protocol RS232	ASCII or Modbus RTU	
Logical Input, Programmable	Trigger Level 2-30Vdc, <3mA, Ref to Gnd.	
Power supply	VDC	10-30 ≤ 0.4 Watt
<b>INFLUENCES</b>		
Safe Load Limit	%* E <sub>max</sub>	150
Ultimate Load	%* E <sub>max</sub>	200
Eccentric loading error acc. to OIML R76	%FS	±0.023
Max platform size	mm	400X600
Temperature Effect on Zero	%FS/°C	0.004
Temperature Effect on Span	%FS/°C	0.004
Temperature Range	°C	Operating: -10/+40 Storage: -40/+70
EMC performance	MID Class E2 (Industrial Locations)	
I/O Protection, All Pins	Reversed Polarity; Excess Voltage and Surge	
Isolation Body/ Electronics at 500VDC	GΩ	≥1
Cable	24AWG, 4 Conductor, Black, TPM Cable	
Cable Length	in	24 +1/-0
Vibration	2.5G Operational; 5G Non-Operational	
Environmental Protection as per IEC 529	IP67	
Corrosion Resistance	Anodized aluminum	

## PART NUMBERS

Capacity(kg)	Part No.
100	4053D-000-00

Dimensions and specifications subject to change without notice



**Pioneering Measured Solutions**

**Group Four Transducers**

22 Deer Park Drive,  
E. Longmeadow, MA 01028  
www.groupfourtransducers.com

Phone : (800) 419 1444  
Fax : (413) 525 -6182  
sales@group-4.com