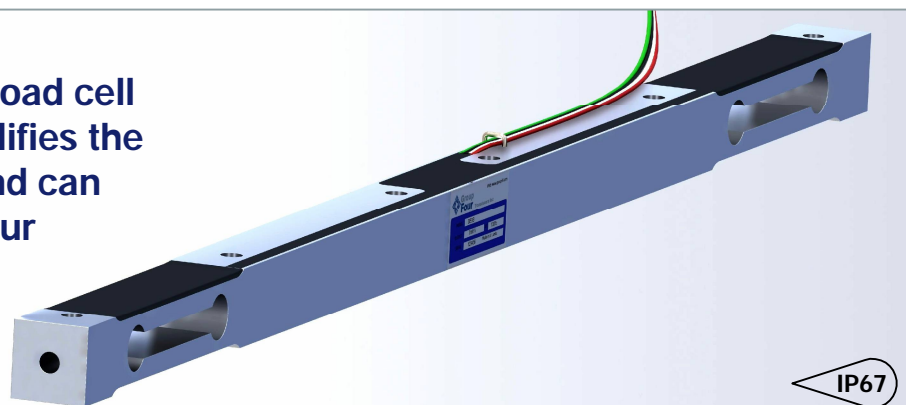


The type DEBB is a unique load cell design concept which simplifies the mounting of the load cell and can reduce the complexity of your assembly.



### FEATURES

- Capacities from 25 to 1000 lbs.
- Anodized aluminum construction.
- Environmental protection IP67.

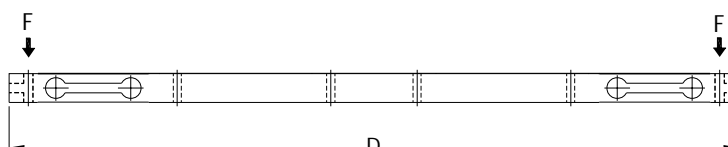
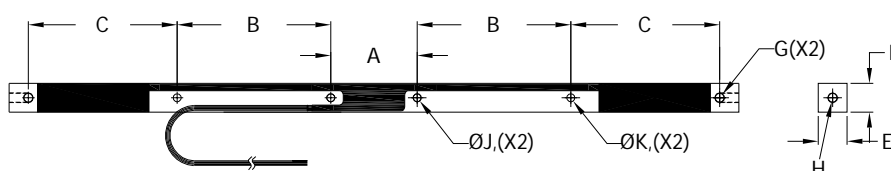
### APPLICATIONS

- Hospital Bed Scales, Hopper Scales, Bin Weighing.

### OPTIONS

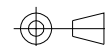
- Shielded cable.
- Cable with connectors.
- Cable length is customized.

### OUTLINE DIMENSIONS



#### Notes:

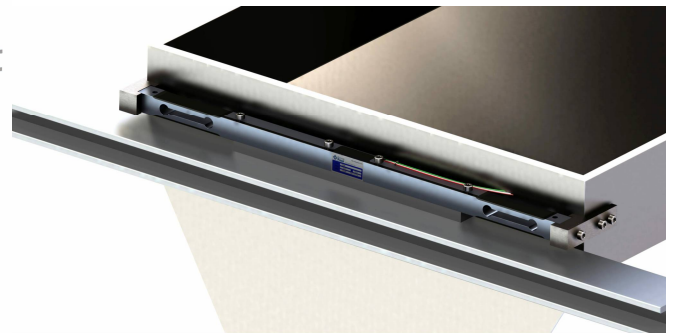
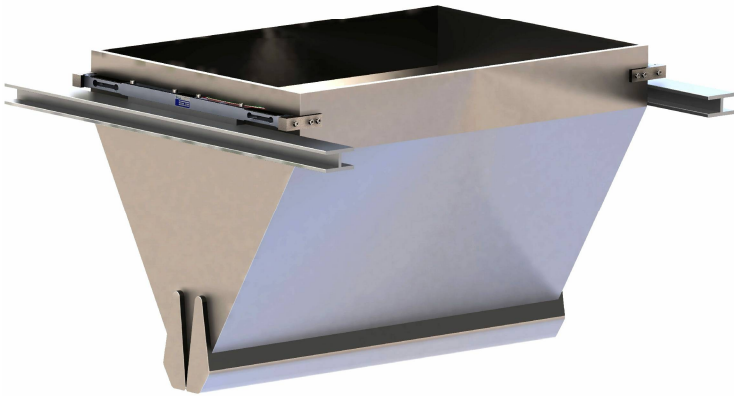
- C - 5.75inches typically.
- D - 19 to 24inches typically.
- Typically A,B,E,G,H,J,K dimensions are determined by the application.
- Shown Loading directions are for positive output.



# double ended beam DEBB

## APPLICATION EXAMPLES

### Hopper Weighing



### Hospital Bed Scales

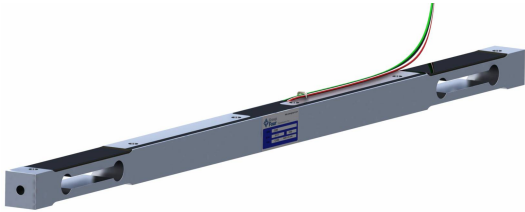


#### Group Four Transducers

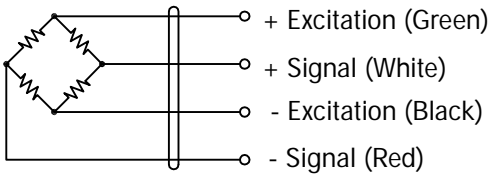
22 Deer Park Drive,  
E. Longmeadow, MA 01028  
[www.groupfourtransducers.com](http://www.groupfourtransducers.com)

Phone : (800) 419 1444  
Fax : (413) 525 -6182  
[sales@group-4.com](mailto:sales@group-4.com)

# double ended beam DEBB



## WIRING



Cable : 26 AWG, 4 Conductor ribbon cable.

## SPECIFICATIONS

Model	DEBB		
Capacities	lb	25-1000	
Full scale output (FS)	mV/V	2.0	
Combined Error	%FS	≤±0.05	
Non-repeatability	%FS	≤±0.02	
Creep @ 30min	%FS	≤±0.03	
Zero balance	%FS	≤±5	
End to end output	%FS	0.10%matched	
Temperature range			
	Compensated	°C	-10... +40
	Operating	°C	-20... +60
Terminal resistance			
	Input resistance	Ω	386±50
	Output resistance	Ω	350±10
Excitation voltage	VDC	5... 15	
Insulation resistance @ 50V DC	MΩ	≥ 5000	
Safe overload limit	%FS	150	
Ultimate load	%FS	200	
Seal type	IP67		
Element material	Anodized Aluminum		

Dimensions and specifications subject to change without notice