

**Digital S Beam, ideal for force, test stands and weight measurement.**



**FEATURES**

- Capacities from 50lb to 2000lb.
- Stainless steel construction.
- Environmental protection IP67.
- AD conversion rate up to 1200upd./sec.
- Free PC based start up and evaluation software available.

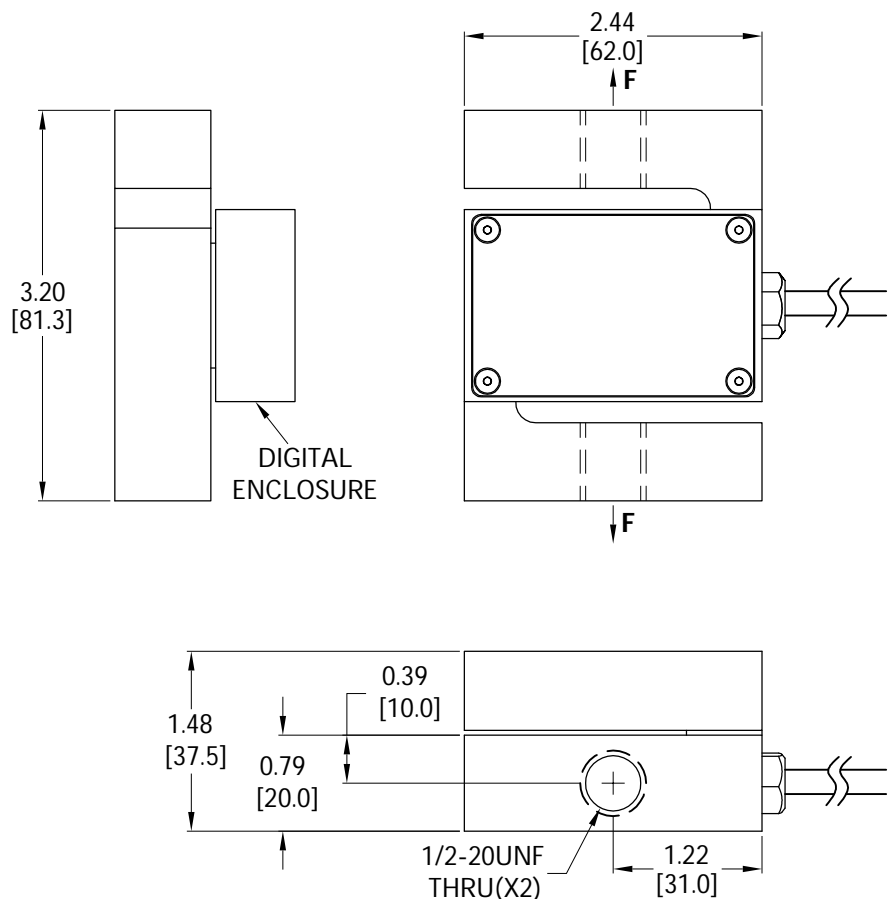
**APPLICATIONS**

- Force measurement in material testing machines, cranes, lifts and other general tension applications.

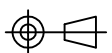
**OPTIONS**

- Load cells can be supplied with calibration certificates as per ASTM E74.

**OUTLINE DIMENSIONS**



NOTE: SHOWN LOADING DIRECTION IS FOR POSITIVE OUTPUT



# digital s beam WSBD 3013D



## WIRING

COLOR CODE	RS232+CAN	RS485+RS422
RED	PWR+	PWR
BLACK	GND	GND
WHITE	RxD	Rx+
GREEN	TxD	Rx-
BROWN	CANH	Tx+
BLUE	CANL	Tx-

## SPECIFICATIONS

Model	WSBD			
Capacities (E <sub>max</sub> )	kg	50	500	2000
<b>PERFORMANCES</b>				
Combined Error	%FS	≤±0.017		
Creep @ 30min	%FS	≤±0.017		
Zero Balance, raw counts	increments	±2000		
Output resolution at full load, raw counts	increments	512000		
Internal AD conversion rate	upd./sec	1200		
Fix, Digital Low Pass IIR Filter, Default	Hz	18 (Supress 50Hz and 60Hz Influence)		
Adjustable , Digital Low Pass IIR Filter Adjustable , Digital Low Pass FIR Filter	Hz	18-0.25; Selectable in 8 Steps 40-5; Selectable in 8 Steps		
Adjustable, External Output Update Rate	upd./sec	1200-9; Selectable in 8 Steps		
<b>GENERAL I/O's</b>				
Hardware Interface, CAN version	CAN and RS232			
Hardware Interface, RS version	RS485 and RS422 (Both Four Wire)			
Data transmission rates CAN Data transm. rates RS485/RS422/RS232	kb	125; 250;500;1000 9.6;19.2;38.4;57.6;115.2;230.4;460.8		
Protocol CAN Protocol RS485/ RS422/RS232	CANopen ASCII or Modbus RTU			
Power supply	VDC	10-30 ≤ 0.4 Watt		
Cable	24 AWG 6 conductor, foil shielded black PVC cable			
Cable length	ft	5 +0.1 /-0.0		
<b>INFLUENCES</b>				
Safe Load Limit	%* E <sub>max</sub>	150		
Ultimate Load	%* E <sub>max</sub>	300		
Temperature Effect on Zero	%*FS/°C	0.001		
Temperature Effect on Span	%*FS/°C	0.001		
Temperature Range	°C	Operating: -10/+40		
EMC performance	MID Class E2 (Industrial Locations)			
I/O Protection, All Pins	Reversed Polarity; Excess Voltage and Surge			
Isolation Body/ Electronics at 500VDC	GΩ	≥1		
Environmental Protection	IP67			
Corrosion Resistance	Stainless Steel			

## PART NUMBERS

Capacity(lb)	Communication Interface	Part No.
50	RS485+RS422	3013D-000-00
500	RS485+RS422	3013D-001-00

Dimensions and specifications subject to change without notice



**Pioneering Measured Solutions**

**Group Four Transducers**

22 Deer Park Drive,  
E. Longmeadow, MA 01028  
www.groupfourtransducers.com

Phone : (800) 419 1444  
Fax : (413) 525 -6182  
sales@group-4.com