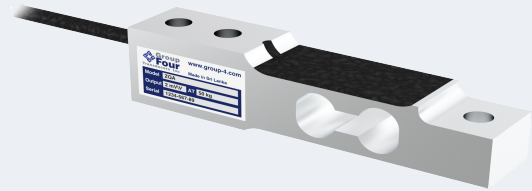


The ZQA anodized aluminum single ended beam load cell is ideal for use in floor scales, bench scales, tank weighing, hopper weighing and conveyor scales.



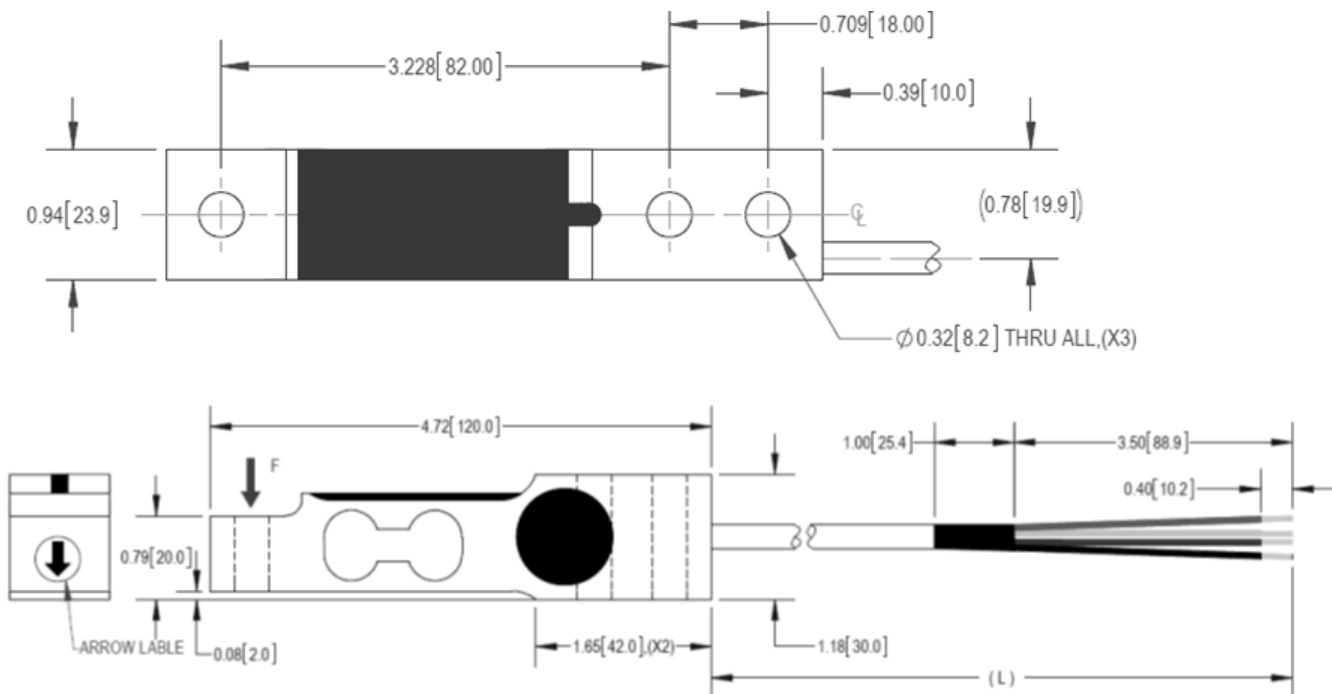
FEATURES

- Anodized aluminum construction
- Environmental protection IP67
- Capacities from 10kg to 100kg
- Industry standard mounting dimensions

APPLICATIONS

- Floor scales
- Bench scales
- Tank weighing
- Hopper weighing
- Conveyor scales

DIMENSIONS



SPECIFICATIONS

Model	ZQA	
Capacities	kg	10, 20, 50, 100
Full Scale Output (FS)	mV/V	2.0± 0.1%
Calibration in MV/V/Ω	%	≤±0.05
Combined Error	%FS	≤±0.03
Non-linearity	%FS	≤±0.03
Hysteresis	%FS	≤±0.03
Creep @30min	%FS	≤±0.03
Zero Balance	%FS	≤±5
Temperature Effect (output)	%FS/10C	≤±0.04
Temperature Effect (zero)	%FS/10C	≤±0.04
Temperature Range (compensated)	C	-10... +40
Temperature Range (operating)	C	-20... +65
Terminal Resistance (input)	Ω	410±30
Terminal Resistance (output)	Ω	350±5
Excitation Voltage	VDC	5...15
Insulation Resistance @50VDC	MΩ	>5000
Safe Overload Limit	%FS	150
Ultimate Load	%FS	200
Cable Length	Meter	3
Cable Type	24AWG6 Conductor Black Cable with drain wire	
Seal Type	IP67	
Element Material	Anodized Aluminum	

WIRING

CABLE WIRE COLOR	CONNECTION
RED	+ EXCITATION
BLACK	- EXCITATION
WHITE	- SIGNAL
GREEN	+ SIGNAL

PART NUMBER

CAPACITY (kg)	G4 P/N
10	1054-000-00
20	1054-001-00
50	1054-002-00
100	1054-003-00

11.5.20