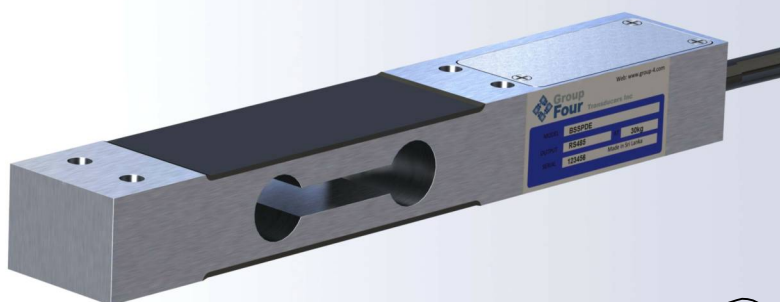


The BSSPDE is a digital aluminum single point load cell. Ideal for use in bench scales, conveyor scales, filling and packaging machines.



FEATURES

- Capacities from 3, 6, 15 & 30kg
- Aluminum construction
- Overload stopping mechanism
- Environmental protection IP67
- AD conversion rate up to 1200upd./sec
- Free professional software to set up digital load cell

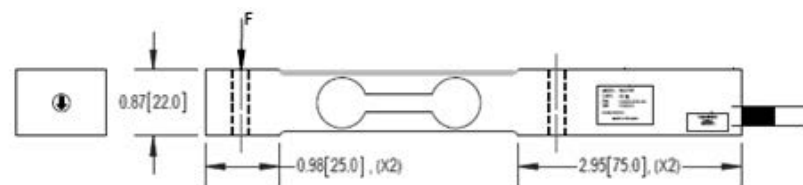
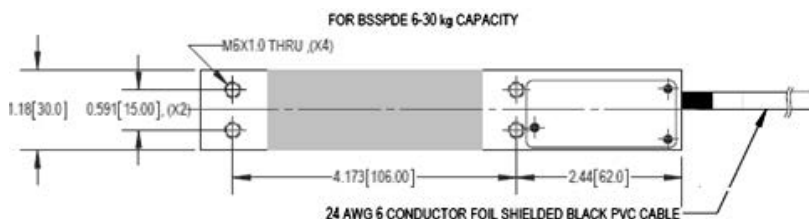
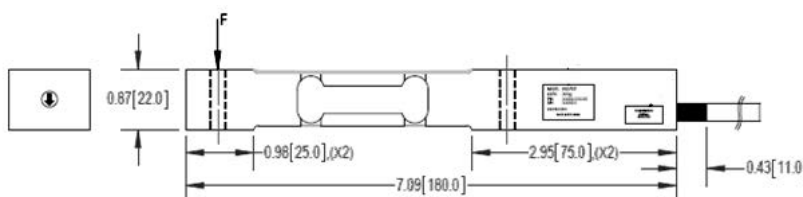
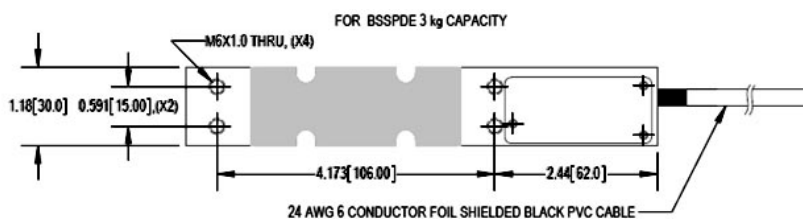
APPLICATIONS

- Bench scales
- Retail scales
- Conveyor scales
- Filling and Packaging machines
- Checkweighers

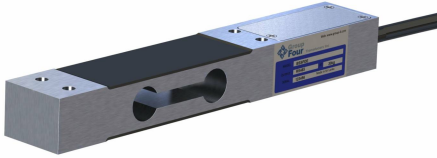
OPTIONS

- Communication interface
 - Gen (CAN + RS 232)
 - A (RS 485 + RS 422)
 - Load cells can be supplied with calibration certificates as per ASTM E74

OUTLINE DIMENSIONS



digital single point BSSPDE 4002D



SPECIFICATIONS

Model	BSSPDE				
Capacity (Emax)	kg	3	6	15	30
PERFORMANCES					
Accuracy class		C3			
Combined error	%FS	≤ 0.017			
Creep error (30min)	%FS	≤ 0.017			
Zero balance, raw counts	increments	±2000			
Output resolution at full load, raw counts	increments	512000	512000	256000	512000
Internal AD conversion rate	upd/sec	1200			
Fix digital low pass IIR filter, default	Hz	18 (supress 50Hz and 60Hz influence)			
Adjustable, digital low pass IIR Filter	Hz	18-0.25; selectable in 8 steps			
Adjustable, digital low pass FIR filter	Hz	40-5; selectable in 8 steps			
Adjustable, external output update rate	upd/sec	1200-9; selectable in 8 steps			
GENERAL I/O's					
Hardware interface, CAN version		CAN and RS232			
Hardware interface, RS version		RS485 and RS422 (both four wire)			
Data transmission rate CAN	kb	125; 250; 500; 1000			
Data transmission rates RS485/RS422/RS232 kb	kb	9.6; 19.2; 38.4; 57.6; 115.2; 230.4; 460.8			
Protocol CAN		CANopen			
Protocol RS485/RS422/RS232		ASCII or Modbus RTU			
Power supply		VDC +10 -+30≤ 0.4 Watt			
INFLUENCES					
Safe load limit	%FS	150			
Ultimate Load	%FS	300			
Eccentric loading error acc. To OIML R76	%FS	0.023			
Temperature effect on zero	%FS/ °C	0.01			
Temperature effect on span	%FS/ °C	0.01			
Temperature range	°C	Operating: -10/+40			
EMC performance		MID Class E2 (Industrial locations)			
I/O protection, all pins		Reversed polarity; Excess voltage and surge			
Isolation body/Electronics at 500VDC	GΩ	≥1			
Vibration		2.5G operational; 5G non-operational			
Environmental protection per IEC 529		IP67			
Corrosion resistance		Aluminum			

WIRING

Color code	RS-232+CAN	RS-485+RS-422
Red	PWR+	PWR+
Black	GND	GND
White	RxD	Rx+
Green	TxD	Rx-
Brown	CANH	Tx+
Blue	CANL	Tx-

Cable:
24 AWG, 6 Conductor foil Shielded
black PVC cable.

PART NUMBERS

BSSPDE PART NUMBERS								
OPTION	GEN				A			
COMMUNICATION INTERFACE	RS-232/CAN				RS-485/RS-422			
CAPACITY	3	6	15	30	3	6	15	30
G4 P/N	4002D-000-01	4002D-001-01	4002D-006-01	4002D-002-01	4002D-000-02	4002D-001-02	4002D-006-01	4002D-002-02

Dimensions and specifications subject to change without notice



Pioneering Measured Solutions

Group Four Transducers

22 Deer Park Drive,
E. Longmeadow, MA 01028
www.groupfourtransducers.com

Phone : (800) 419 1444
Fax : (413) 525 -6182
sales@group-4.com