

The digital RCAD is a stainless steel self centering rocker column compression load cell ideal for fertilizer and seed weighing systems, mixers, silos, truck scales, tank weighing applications. The hermetically sealed load cell is ideal for use in heavy wash down applications. Protection class IP69K.



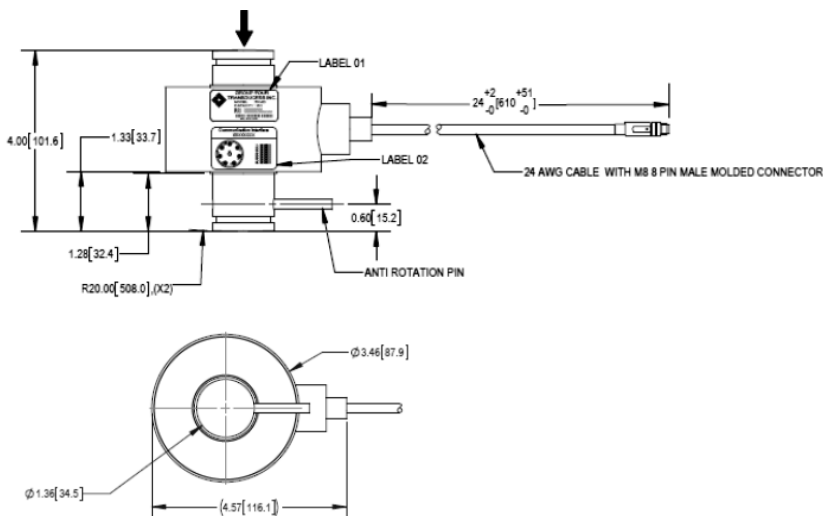
FEATURES

- Capacities in tons 5, 10, 20, 30, 40 & 50T
- Stainless steel construction
- A to D conversion rate up to 1200 upd/sec.
- Free software for simple load cell setup and operation
- Anti-rotation pin for movement protection
- Environmental protection IP69 with hermetic sealing
- M8 8Pin molded connector

APPLICATIONS

- Mixers
- Tank Weighing
- Truck scales
- Hopper weighing
- Silo weighing
- Washdown applications

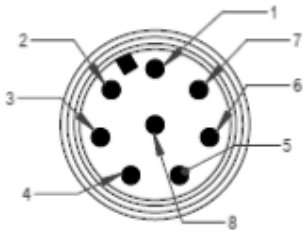
OUTLINE DIMENSIONS



SPECIFICATIONS

Model		RCAD
Capacity (E max)	t	5, 10, 20, 30, 40, 50
PERFORMANCES		
Non-linearity	%FS	<±0.03
Hysteresis	%FS	<±0.05
Creep Error (30 min)	%FS	<±0.02
Zero Balance, Raw Counts	Increments	±2000
Output resolution at full load, raw counts	Increments	512000
Internal AD conversion rate	upd./sec	1200
Fix, digital low pas IIR filter, default	Hz	18 (Suppress 50Hz and 60 Hz influence)
Adjustable, digital low pass IIR filter	Hz	18-0.25; selectable in 8 steps
Adjustable, digital low pass FIR filter		40-5, selectable in 8 steps
Adjustable, external output update rate	upd./sec	1200-9; selectable in 8 steps
GENERAL I/O's		
Hardware interface, CAN version		CAN and RS232
Hardware interface, RS version		RS485 and RS422 (both 4 wire)
Data transmission rate CAN		125; 250; 500; 1000
Data transm, rates RS485/RS422/RS232	kb	9.6; 19.2; 38.4; 57.6; 115.2; 230.4; 460.8
Protocol CAN		CANopen
Protocol RS485/RS422/RS232		ASCII or Modbus RTU
Logical input, programmable		Trigger level 2-30Vdc, <3mA, Ref to Gnd
Power supply	VDC	+10 -+30<0.4 Watt
INFLUENCES		
Safe load limit	%FS	150
Ultimate load	%FS	200
Temperature effect on zero	%FS/10°C	0.004
Temperature effect on span	%FS/10°C	0.004
Temperature range	°C	Operating: -10/+40
EMC performance		MID Class E2 (industrial locations)
I/O protection, all pins		Reversed polarity; excess voltage and surge
Isolation body/electronics at 500VDC	G	>1
Vibration		2.5G operational; 5G non-operational
Environmental protection per IEC 529		Body IP69K, connectors IP68
Corrosion resistance		All Stainless Steel

WIRING GRAPHIC



PIN NO	RS232+CAN	RS485 + RS422
1	GND1	GND1
2	PROGRAM	PROGRAM
3	CANH	Rx+
4	TRIGGER INPUT	TRIGGER INPUT
5	CANL	Rx-
6	RxD	Tx-
7	TxD	Tx+
8	PWR+	PWR+

PART NUMBERS

Capacity	GEN	A
5t (50kN)	5053D-000-00	5053D-000-01
10t (100kN)	5053D-001-00	5053D-001-01
20t (200kN)	5053D-002-00	5053D-002-01
30t (300kN)	5053D-003-00	5053D-003-01
40t (400kN)	5053D-004-00	5053D-004-01
50t (500kN)	5053D-005-00	5053D-005-01

Communication Interface Label Description

Option	Label Description
GEN	RS232 + CAN
A	RS485 + RS422