



Pioneering Measured Solutions

Short Selection Guide

Planar Beam Load Cells

group-4.com

GROUP FOUR PLANAR BEAM LOAD CELLS

Group Four's planar beam load cells feature a unique compact design and low-profile form factor allowing flexibility in scale designing. Typically, planar beams are used in sets of three or four per scales for retail scales, medical scales or applications where space and cost are limiting factors.

Group Four's specially developed winged beam design philosophy employs electrical and mechanical symmetry techniques to help improve non-linearity performance to 0.002% FSO, an industry best. The high accuracy and dependability of the G4 planar beam load cells make them an ideal choice where consistent specific measurement is required.

Group Four's continuous research and development efforts takes its planar beams to next level in digital format, weigh modules and compact pod types,

Please review this brief product family overview and contact our application engineers to discuss your specific needs.



Capacity Range:

Load cell capacities ranging from 10lb to 800lb are available.



Material Construction:

Aluminum



Environmental Protection:

IP67



Options:

- Different mounting and loading sizes
- Weighing accessories (load feet Anti-vibration mounts & etc.)
- Weigh modules
- Digital Version.

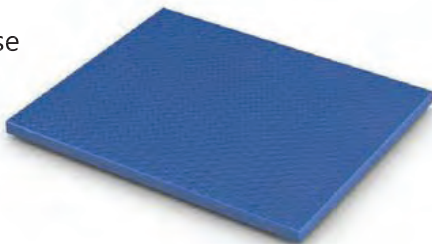


Customized solutions:

When it is not possible to match standard load cell for any application, Group four can specially check the requirement and provide economical customized load cell solutions.

APPLICATIONS

General-purpose bench scales



Counting scales



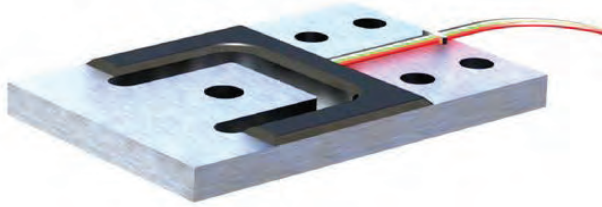
Sale scales in checkout counters



Medical equipment



GPB 6001



Capacity Range



165-827lb
[75-375]

Environmental Protection



IP67

Material Construction



Aluminum

Output

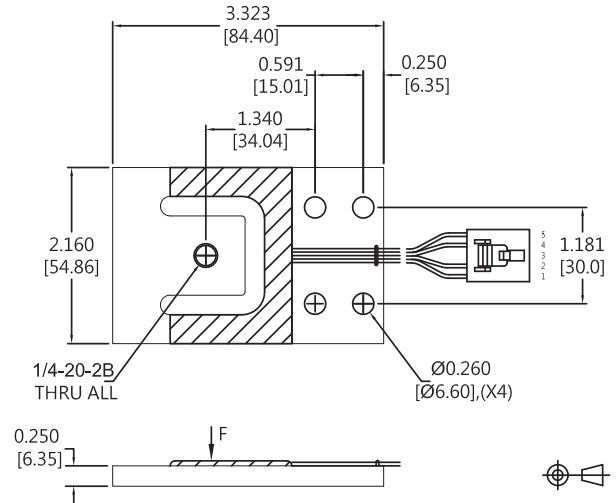


0.9mV/V

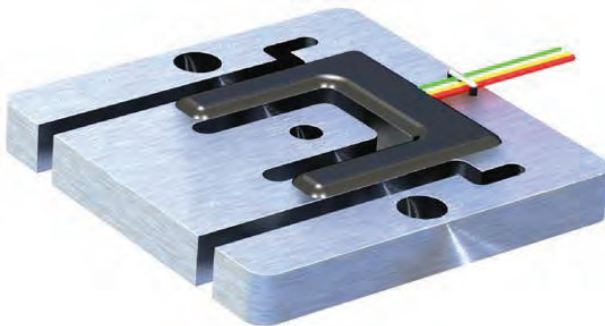
Combined Error



NL 0.02%FS
HYS 0.02%FS



WMB 6002



Capacity Range



37.5-200lb
[17-91kg]

Environmental Protection



IP67

Material Construction



Aluminum

Output

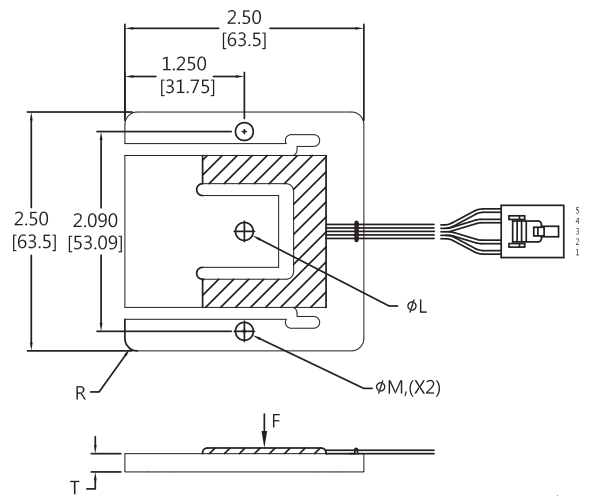


0.9mV/V

Combined Error

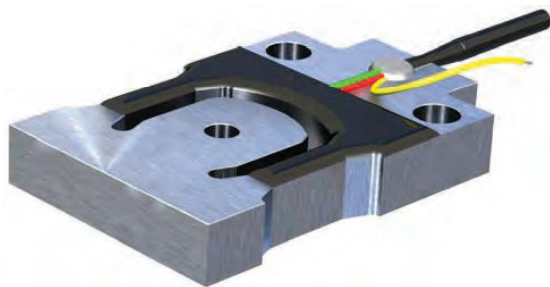


NL 0.02%FS
HYS 0.02%FS



Note: ϕL , ϕM , T and R dimensions are changed as per capacity.

HPB 6003



Capacity Range



6-220lb
[12.5-100kg]

Environmental Protection



Material Construction

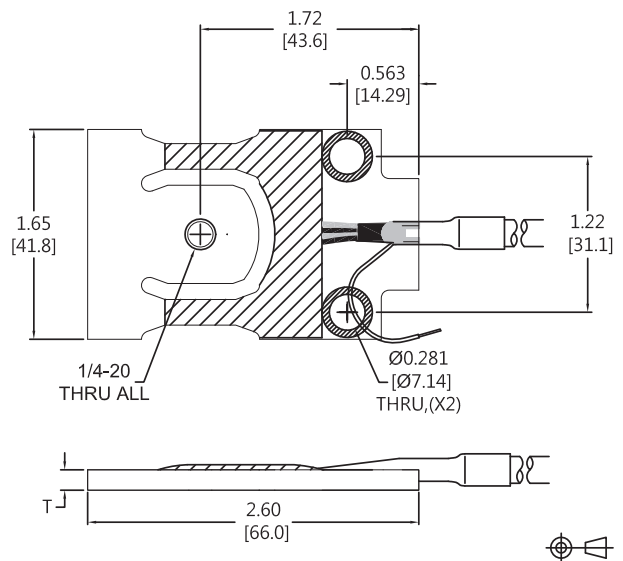


Aluminum

Output



1mV/V



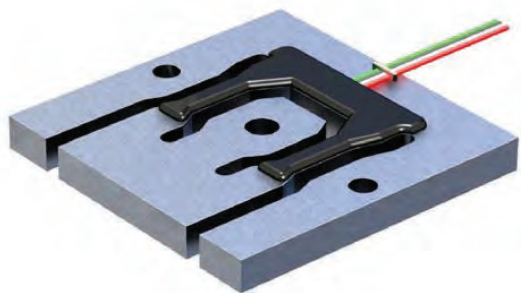
Note: "T" Dimension is changed as per capacity

Combined Error



NL 0.02%FS
HYS 0.02%FS

MWPB 6005



Capacity Range



37.5lb-165lb
[17-75 kg]

Environmental Protection



Material Construction

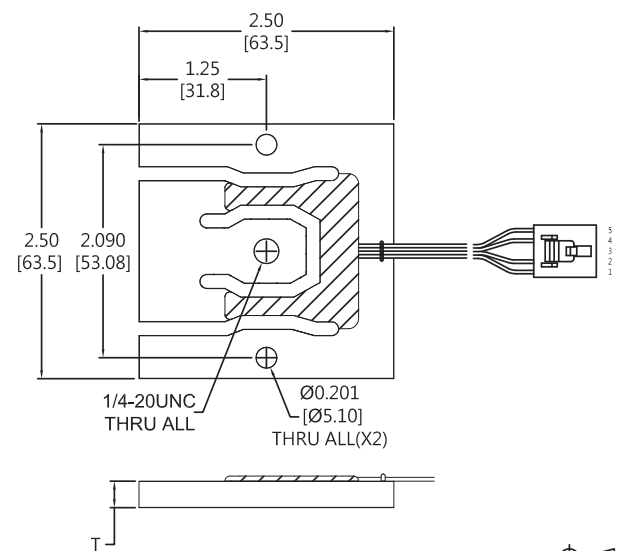


Aluminum

Output



0.9mV/V



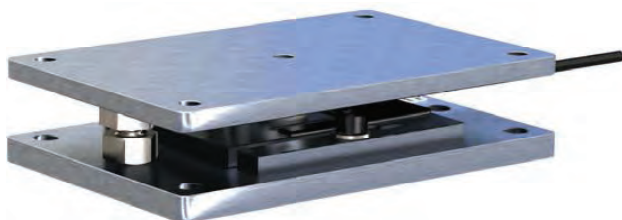
Note: "T" Dimension is changed as per capacity

Combined Error

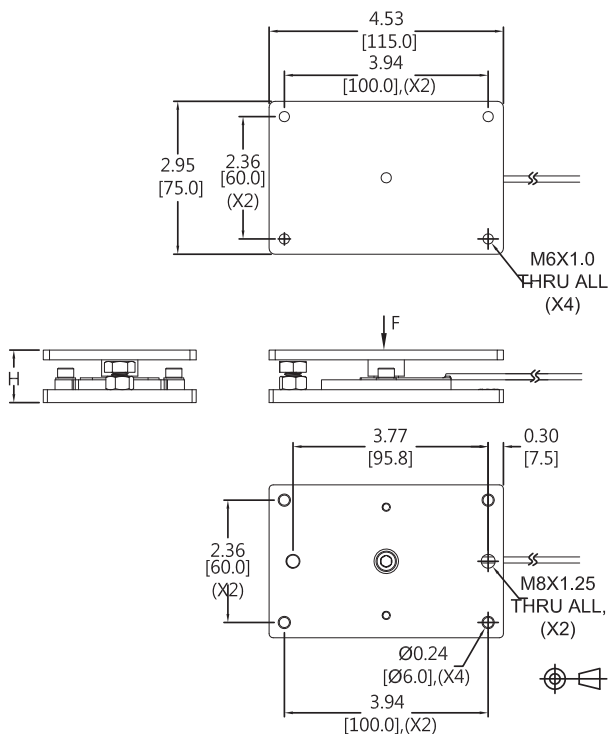
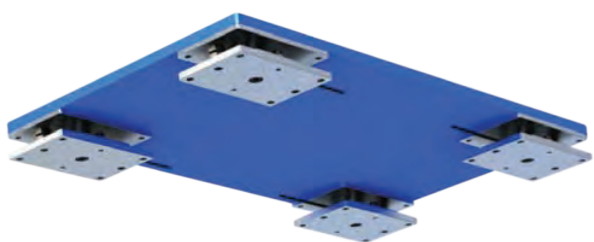
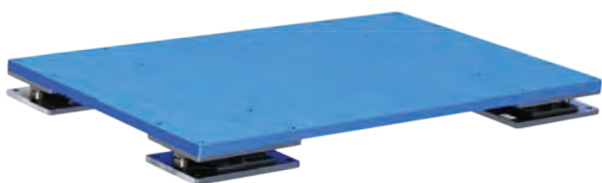


NL 0.02%FS
HYS 0.02%FS

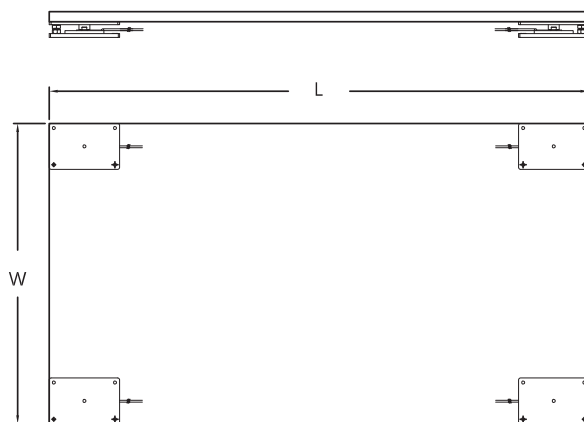
WMBP 5000WM6



Application



Note: "H" Dimension is changed as per capacity



Note: "L X W" Dimensions as per customer requirement.

Capacity Range



11-200lb
[5-91kg]

Environmental Protection



Material Construction



Aluminum

Output



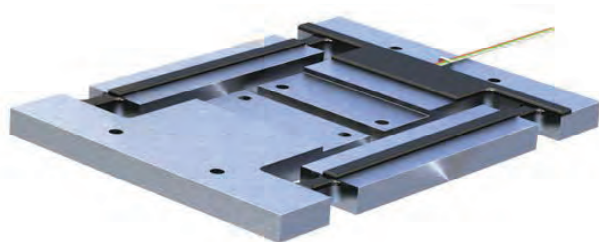
0.9mV/V

Combined Error



NL 0.02%FS
HYS 0.02%FS

CPBS



Capacity Range



13lb
[6kg]

Environmental Protection



Material Construction

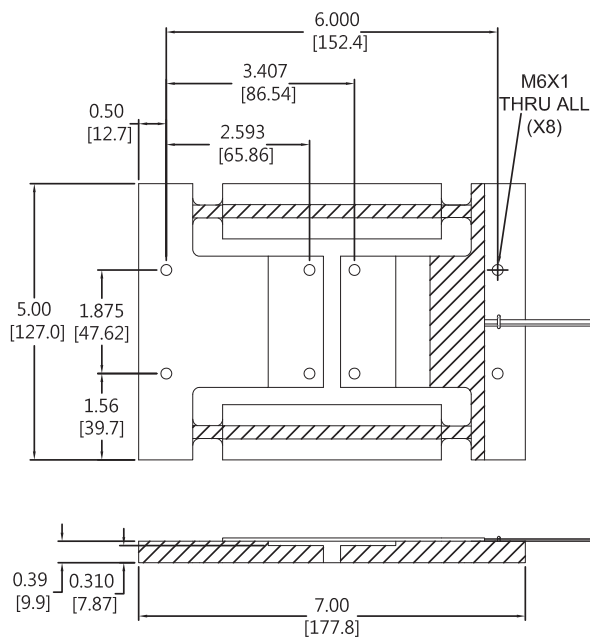


Aluminum

Output



1mV/V

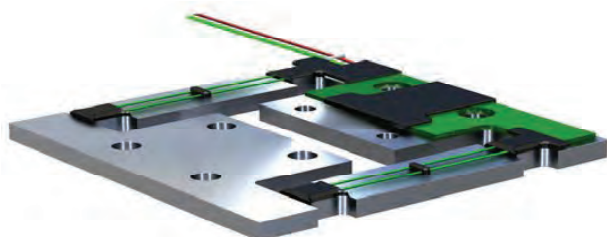


Combined Error



NL 0.017%FS
HYS 0.017%FS

CPBE



Capacity Range



15lb
[6.8 kg]

Environmental Protection



Material Construction

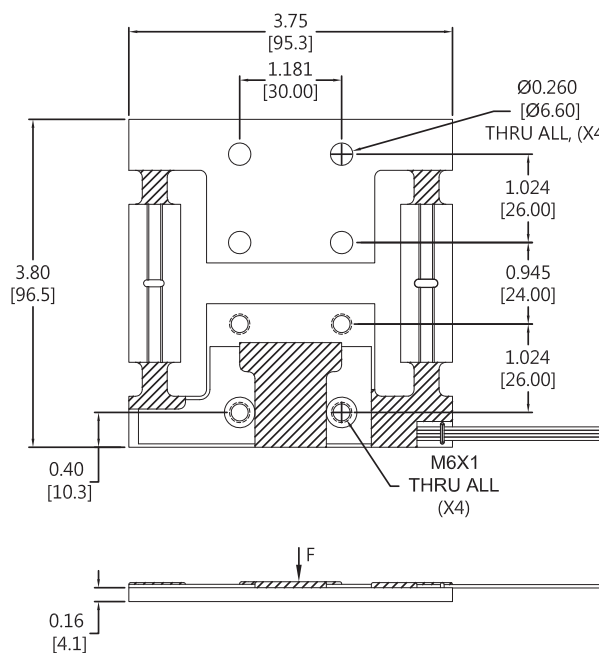


Aluminum

Output



1.1mV/V



Combined Error



NL 0.02%FS
HYS 0.02%FS

ACCESSORIES

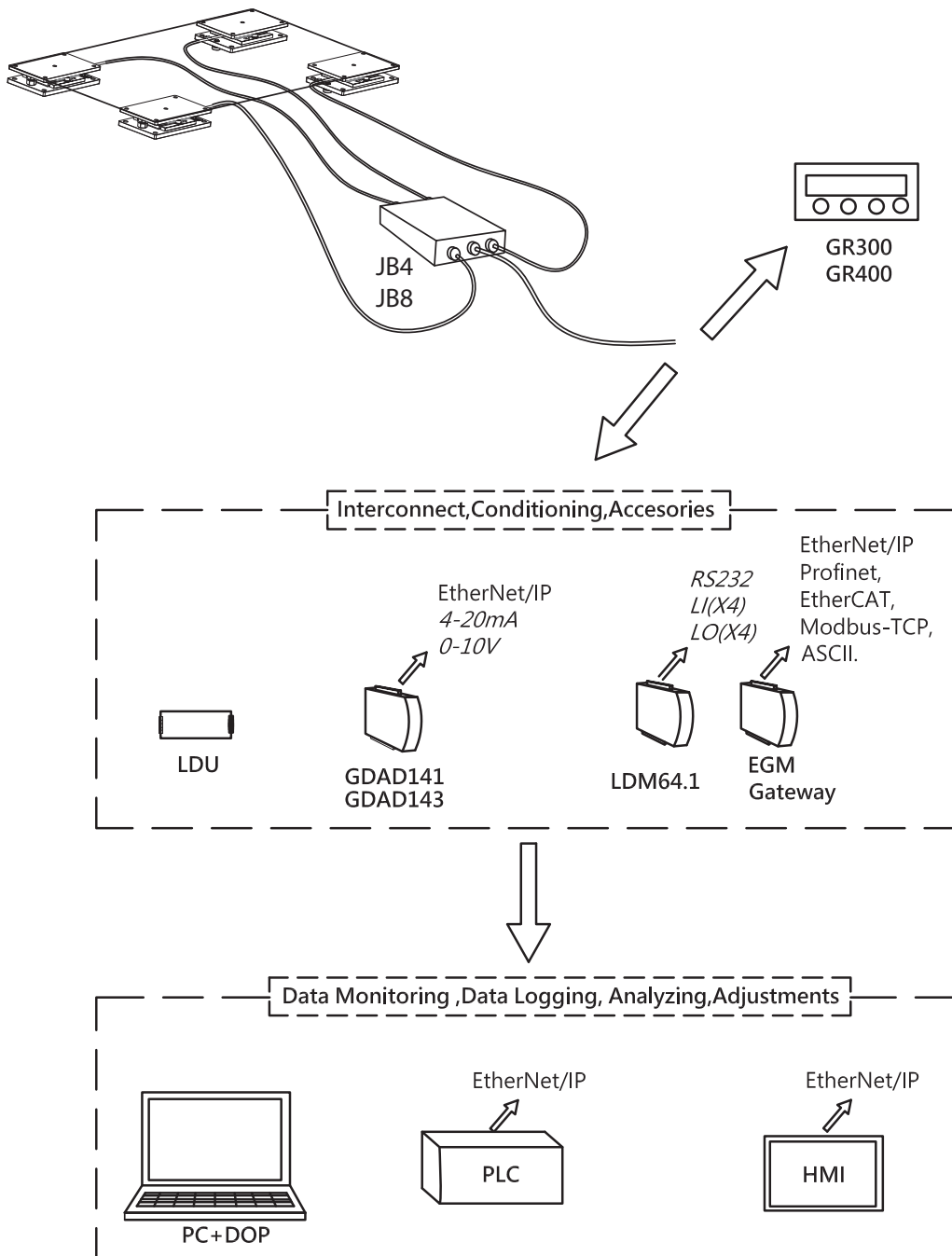
Load Foot



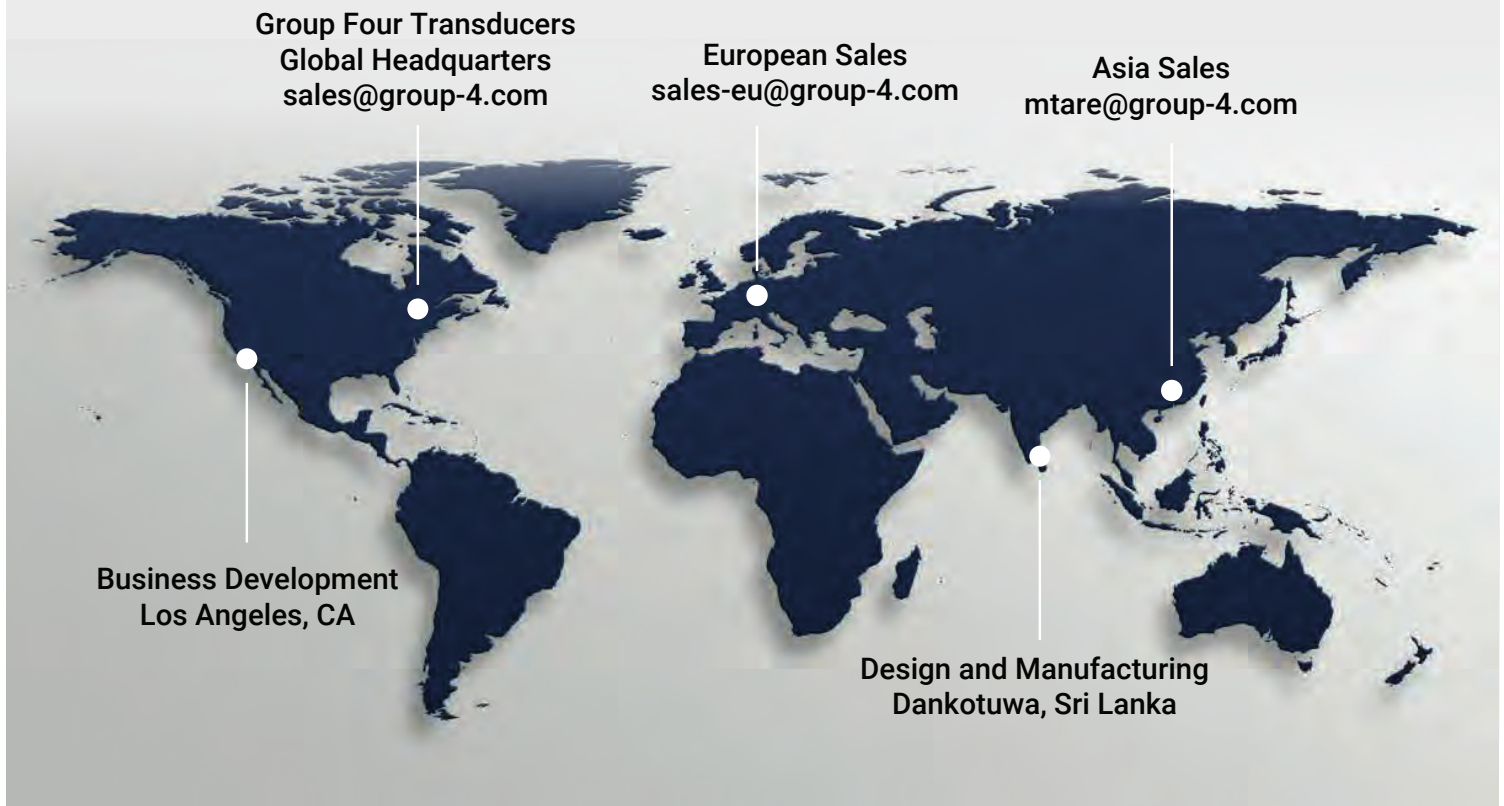
Load Mount



Measurement Chain



Locations



Group Four connects planar beam and other analog systems with signal conditioners to convert, analog signals into digital signals. The Group Four process instrumentation support Ethernet/IP (AB), Profinet, EtherCAT, Modbus TCP, and other communication systems enabling high speed digital data transmissions.

Group Four's pursuit of excellence takes your measurements a step ahead into the world of digital load cells, where you will find load cells with embedded electronics thereby eliminating the need of signal amplification and conversion. You get direct digital output in RS232+CAN or RS485+RS422 format. Connect it directly to your PLC or PC, use our innovated DOP4 software and leave your competition way behind.

Contact a Group Four Application Engineer to Discuss Your Measurement System Today!



Pioneering

Measured

Solutions

Group Four Transducers

22 Deer Park Drive,
E. Longmeadow, MA 01028
www.groupfourtransducers.com

Phone : **(800) 419 1444**
Fax : (413) 525 -6182
sales@group-4.com