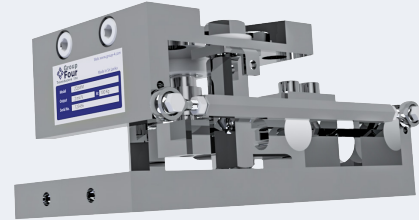


Made from stainless steel, this weigh module using a rocker pin design with uplift protection as well as the optional lateral/anti-sway protection, makes this an ideal solution for weighing tanks, bins and hoppers.



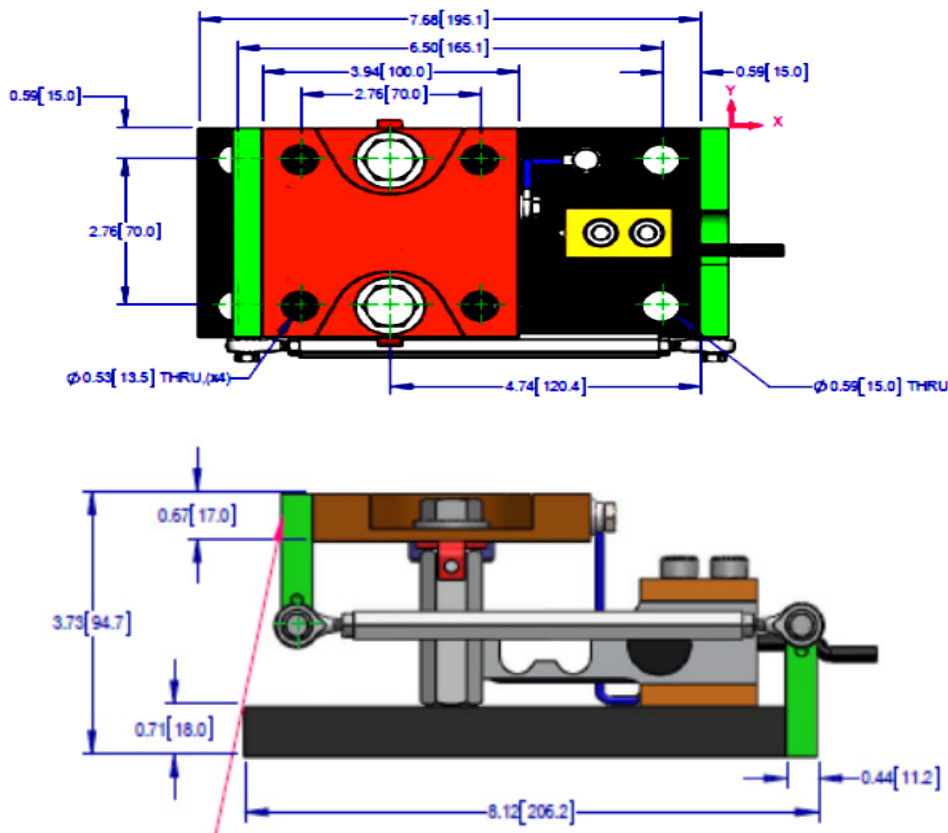
FEATURES

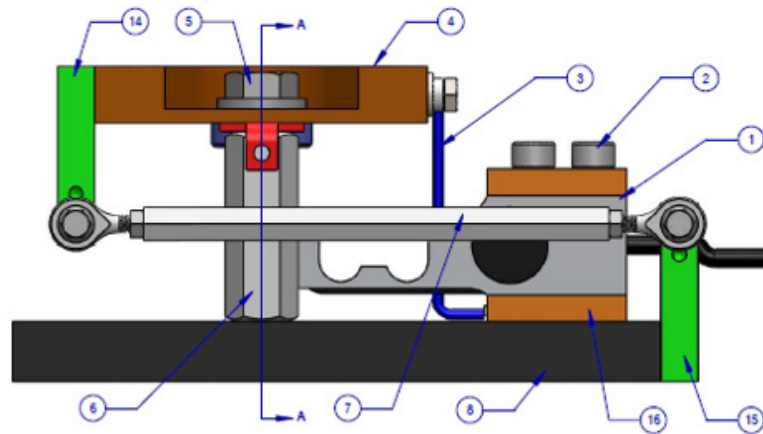
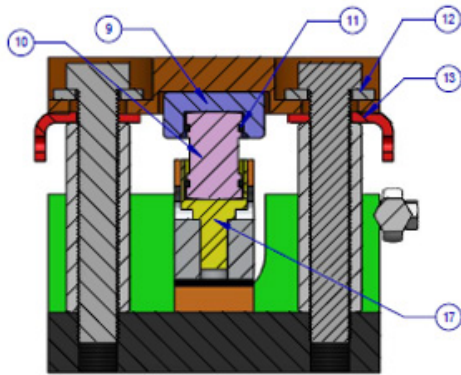
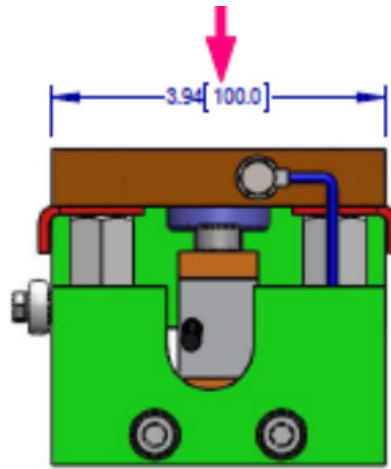
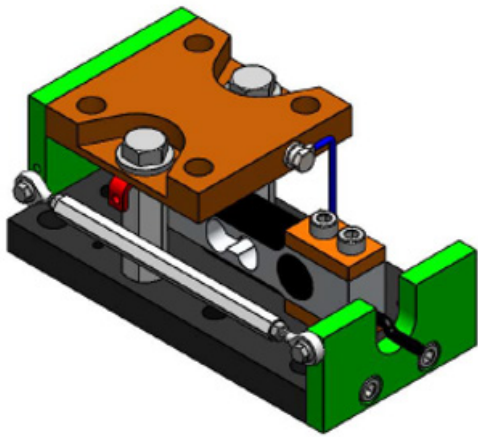
- Capacity range: 10kg to 200kg
- Stainless steel construction
- Environmental Protection IP67
- Designed for easy installation
- Low profile design
- Optional anti-sway design feature

APPLICATIONS

- Hopper
- Mixer
- Platform Scales

DIMENSIONS





ITEM NO	DESCRIPTION	QUANTITY
1	2mV/V, IP67 LOAD CELL (DR # 208886)	1
2	18-8 SS SOCKET HEAD SCREW M8x1.25x60	2
3	GROUNDING CABLE	1
4	TOP PLATE	1
5	18-8 SS HEX HEAD SCREW 1/2-20x3.0 (UPLIFT BOLT)	2
6	HEX STAND-OFF (JAM NUT)	2
7	CHECK LINK	1
8	BOTTOM PLATE	1
9	LOAD CUP	1
10	ROCKER PIN	1
11	O-RING	1
12	1/2 FLAT WASHER	2
13	SHIPPING/INSTALLING STOPPER	2
14	TOP PART	1
15	BOTTOM PART	1
16	SPACER	2
17	LOAD CUP 2	1

SPECIFICATIONS

Model	ZQSWM	
Capacities	kg	10, 20, 50, 100, 200
Full Scale Output (FS)	mV/V	2.0± 0.1%
Calibration in MV/V/Ω	%	≤±0.05
Combined Error	%FS	≤±0.03
Non-linearity	%FS	≤±0.03
Hysteresis	%FS	≤±0.03
Creep @30min	%FS	≤±0.03
Zero Balance	%FS	≤±5
Temperature Effect (output)	%FS/10C	≤±0.04
Temperature Effect (zero)	%FS/10C	≤±0.04
Temperature Range (compensated)	C	-10... +40
Temperature Range (operating)	C	-20... +65
Terminal Resistance (input)	Ω	410±30
Terminal Resistance (output)	Ω	350±5
Excitation Voltage	VDC	5...15
Insulation Resistance @50VDC	MΩ	>5000
Safe Overload Limit	%FS	150
Ultimate Load	%FS	300
Cable Length	Meter	3
Seal Type	IP67	
Element Material	Stainless Steel	

WIRING

CABLE WIRE COLOR	CONNECTION
RED	+ EXCITATION
BLACK	- EXCITATION
WHITE	- SIGNAL
GREEN	+ SIGNAL

PART NUMBER

Capacity (kg)	Part Number
10	1000WM55-000-00
20	1000WM55-001-00
50	1000WM55-002-00
100	1000WM55-003-00

8.25.21 V2