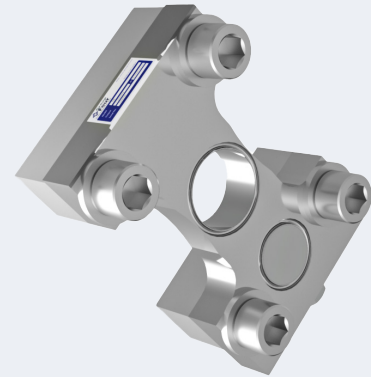


The TIB Stainless steel sensor is ideal for bulk weighing, tank weighing, silo, hopper material measurement. Often referred to as extensometers, the TIB is designed to attach to the structure to measure load.



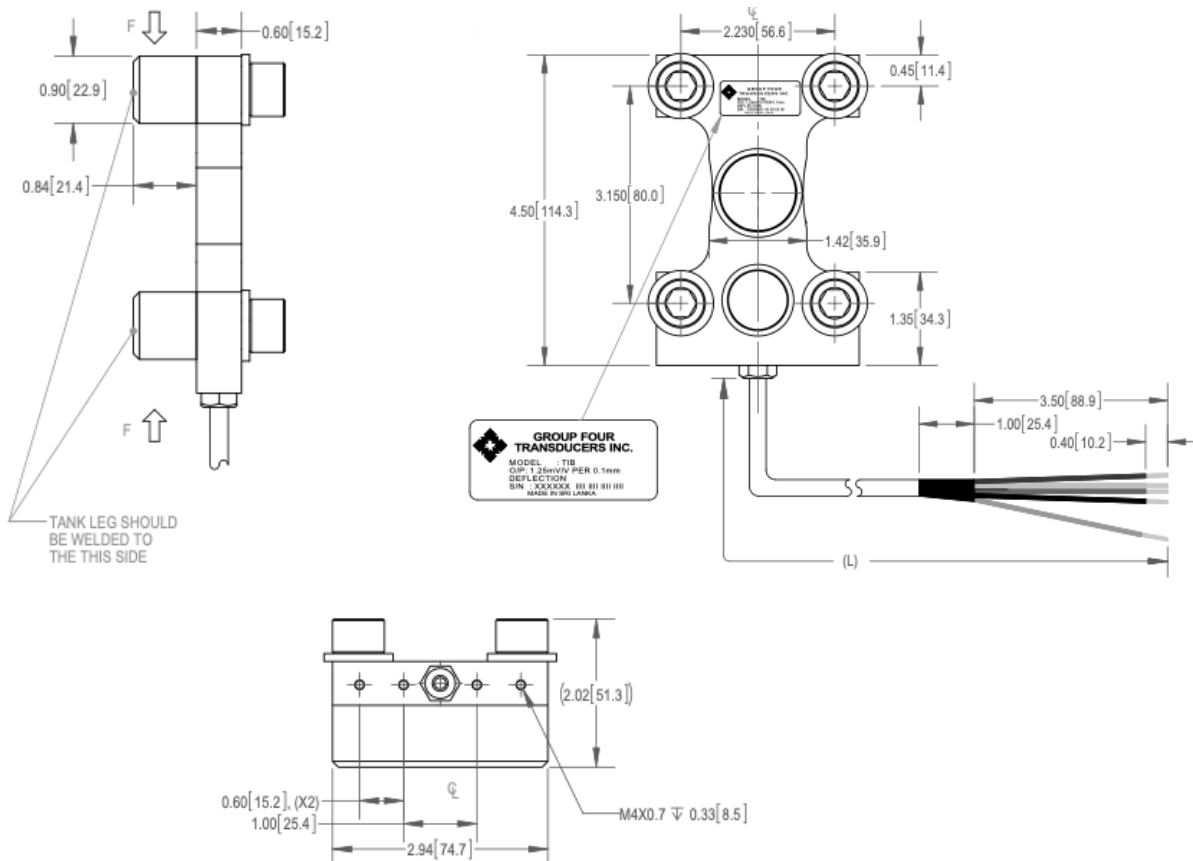
## FEATURES

- Stainless steel construction
- Environmental protection IP68
- Digital output
- Output of 1.25mV/V for 0.1mm deflection
- Special SWAGE clamp

## APPLICATIONS

- Tank weighing
- Silo weighing
- Hopper weighing
- Material measurement
- Anti-overload applications
- Lift up instruments
- Retrofitting

## OUTLINE DIMENSIONS



## SPECIFICATIONS

Model	TIB	
Output at 0.1mm deflection	mV/V	1.25
Zero balance	%FS	$\leq \pm 5$
Temperature effect		
Zero	%FS/10°C	$\leq \pm 0.04$
Temperature range compensated	°C	-10....+40
Temperature range operating	°C	-20....+65
Terminal resistance input	$\Omega$	1000 $\pm$ 30
Terminal resistance output	$\Omega$	1100 $\pm$ 50
Excitation voltage	VDC	5....15
Insulation resistance @50VDC	M $\Omega$	$\geq 5000$
Safe overload limit	%FS	150
Ultimate load	%FS	200
Cable length	M	6
Cable type		22AWG4 conductor black cable with drain wire
Seal type		IP68
Element material		Stainless steel
Bolt torque	lb	90ft

## WIRING

